

Sheep Fair Lane, Chippenham, Wiltshire, SN14 8NA  
Guide Price £270,000  
Council Tax Band: B



\*\*\*Chain Free\*\*\*

Welcome to this charming Chain free terraced house located on Sheep Fair Lane in the picturesque village of Marshfield. This delightful property boasts a cosy reception room, perfect for relaxing with family and friends. With two inviting bedrooms, there is ample space for a small family or guests to stay over comfortably.

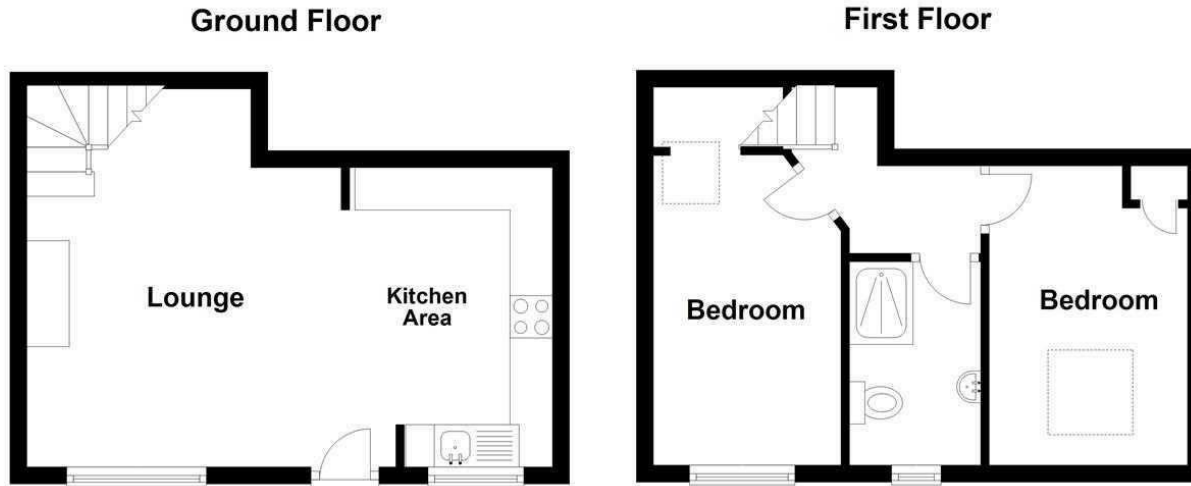
The house features a well-appointed bathroom, ensuring convenience and privacy for all residents. The traditional terraced layout adds character to the property, creating a warm and inviting atmosphere that you'll love coming home to.

Situated in the heart of Marshfield, you'll enjoy the tranquillity of village life while still being within easy reach of local amenities. Whether you're looking to unwind in the peaceful surroundings or explore the nearby countryside, this property offers the best of both worlds.

Don't miss out on the opportunity to make this lovely house your new home. Contact us today to arrange a viewing and experience the charm of Sheep Fair Lane for yourself.



Open House Bristol North East



Energy Efficiency Rating		Current	Potential
Very energy efficient - lower running costs			
(92 plus) <b>A</b>			<b>91</b>
(81-91) <b>B</b>			
(69-80) <b>C</b>			
(55-68) <b>D</b>		<b>58</b>	
(39-54) <b>E</b>			
(21-38) <b>F</b>			
(1-20) <b>G</b>			
Not energy efficient - higher running costs			
<b>England &amp; Wales</b>		EU Directive 2002/91/EC	

Whilst every attempt has been made to ensure accuracy of the floor plan, all measurements are approximate and no responsibility is taken for any error, omission or measurement  
Plan produced using PlanUp.