

29 Park Drive, Hoole, Chester, Cheshire, CH2 3JR
£1,500 Per Month
Council Tax Band: C



Located in the increasingly popular Hoole, just 1.5 miles from the city centre this three bedroomed semi detached property can be found.

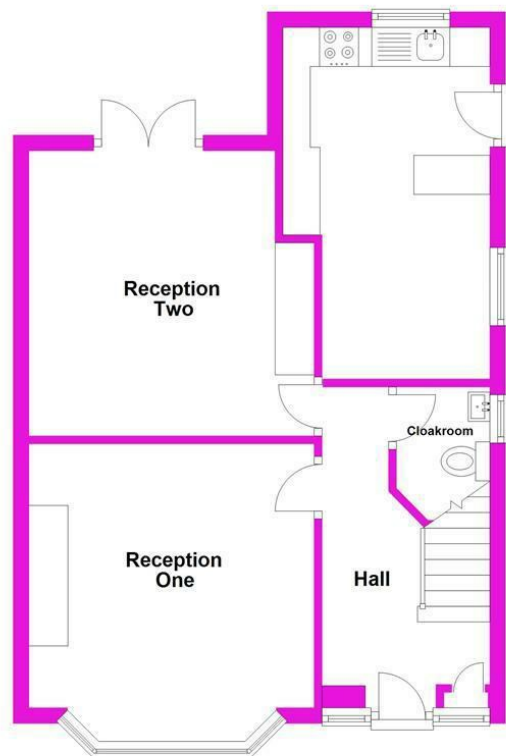
The name Hoole derives from the Old English word hol and is believed to mean "at the hollow" (or hole), possibly referring to the "hollow way" formed by a Roman roadway. With many independent shops and eateries Hoole certainly has a community feel about it and with Alexandra Park and the Millennium Greenway nearby you can certainly enjoy what the area has to offer without even starting on the city centre.



Open House Whitchurch

Ground Floor

Approx. 46.7 sq. metres (502.2 sq. feet)



Total area: approx. 46.7 sq. metres (502.2 sq. feet)

All sizes are approximate and are not to be taken literally.
Plan produced using PlanUp.

Energy Efficiency Rating		
	Current	Potential
Very energy efficient - lower running costs		
(92 plus) A		
(81-91) B		
(69-80) C	69	72
(55-68) D		
(39-54) E		
(21-38) F		
(1-20) G		
Not energy efficient - higher running costs		
England & Wales	EU Directive 2002/91/EC	