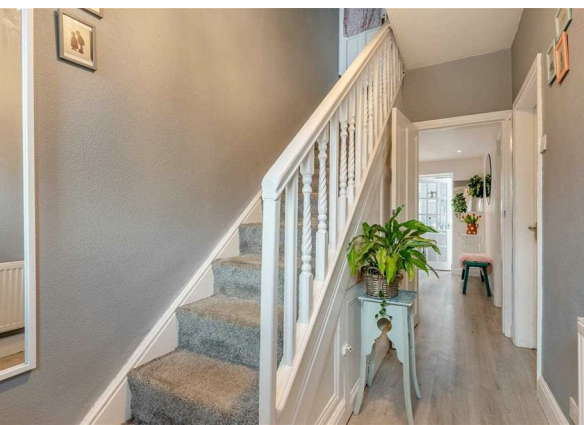


19 Shadewood Crescent, Grappenhall, Warrington, Cheshire, WA4 2SN

Offers Around £450,000

Council Tax Band: C



Welcome to your spacious retreat! This charming 4-bedroom property offers a perfect blend of modern convenience and cosy elegance; this home boasts ample space for comfortable living and entertaining.

Step inside to discover this charming family home, adorned with tasteful finishes and stylish accents throughout. The inviting living area features plenty of natural light, creating a warm and inviting ambiance. The adjacent gourmet kitchen is a chef's delight, complete with sleek countertops, stainless steel appliances, and plenty of cabinet space for storage.

Upstairs, you'll find four generously sized bedrooms, each offering privacy and comfort for the whole family. The master suite is a true haven, with ensuite bathroom providing the perfect sanctuary to unwind after a long day.

Outside, the lush backyard oasis beckons for outdoor relaxation and recreation, with a spacious patio area ideal for al fresco dining and gatherings with loved ones. With its convenient location close to schools, parks, shopping, and dining options, this property offers the perfect combination of tranquility and convenience for modern living.

Don't miss your chance to make this stunning property your new home sweet home! Schedule a showing today and experience the epitome of comfortable living.

COUNCIL TAX BANDING C



**348a Manchester Road, Warrington,
Cheshire, WA1 3RE**
0333 015 5440
info@localagent.co.uk

19 Shadewood Crescent, Grappenhall, Warrington



Please note that the location of doors, windows and other items are approximate and this floorplan is to be used for illustrative purposes only. Unauthorized reproduction is prohibited.

Energy Efficiency Rating		
	Current	Potential
Very energy efficient - lower running costs		
(92 plus) A		
(81-91) B		
(69-80) C		
(55-68) D		
(39-54) E		
(21-38) F		
(1-20) G		
Not energy efficient - higher running costs		
England & Wales	EU Directive 2002/91/EC	