

192 Westmount Road, London, SE9 1XQ

£850,000

Council Tax Band:



GUIDE PRICE £850,000 TO £875,000

We are delighted to present this rare opportunity to acquire this stunning four-bedroom, two-bathroom residence - a fine example of one of Eltham's highly coveted Corbett homes.

This handsome end of terrace property is positioned on one of the area's premier residential roads and boasts an array of impressive period features, capturing the essence of classic architecture whilst offering ample space for contemporary living.

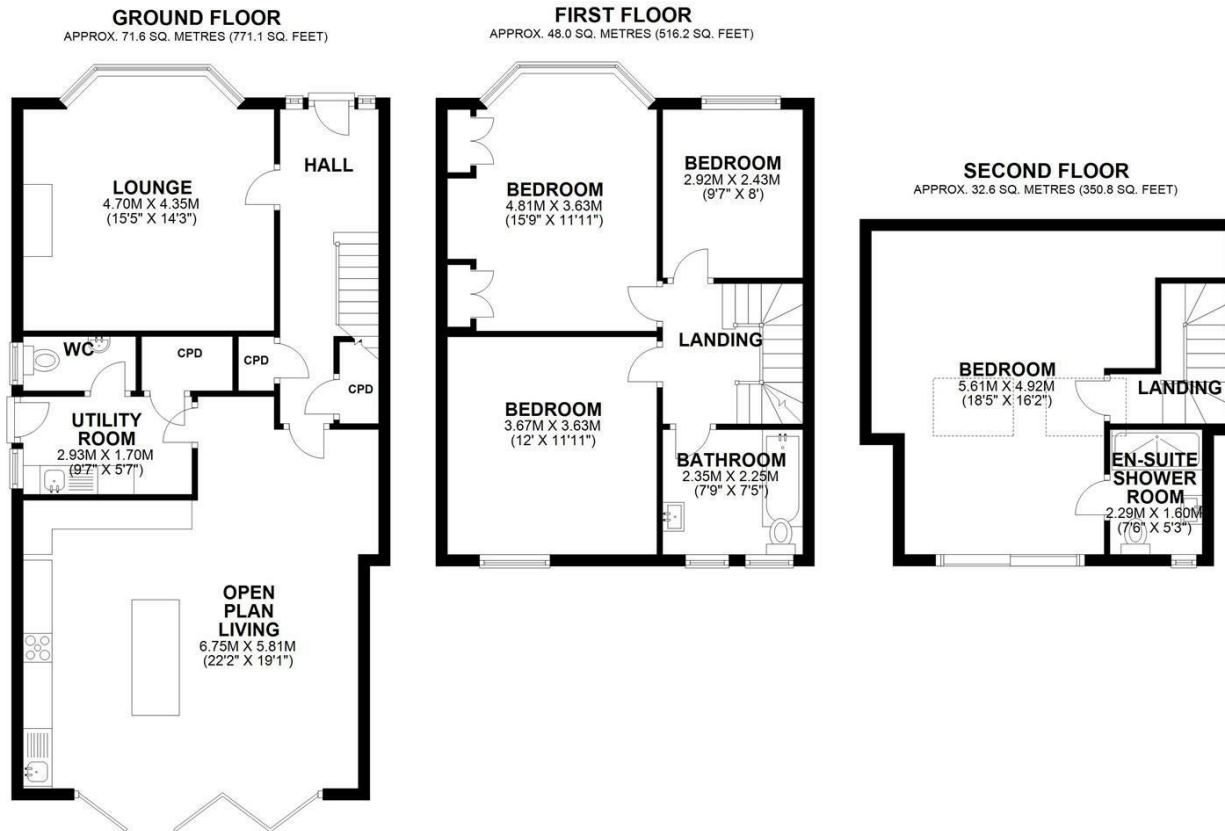
Having been recently extended and improved by the current vendors, the house now benefits from generous accommodation throughout and the high ceilings and period features add an air of grandeur, creating a truly inviting atmosphere. As you step through the decorative stained glass front door, you are greeted by a welcoming hallway and an elegant staircase, setting the tone for the rest of the home. The spacious living area is bathed in natural light, thanks to the large bay window beautifully framed by plantation shutters. The bright and well-appointed kitchen/diner is the heart of the property and features integrated appliances, sleek countertops, and an abundance of storage space with a breakfast bar and bi-folding doors to the garden. The ground floor is completed with a useful and modern utility room leading to a stylish cloakroom. The first level offers three generously sized bedrooms along with a beautifully presented three-piece family bathroom. The equally inviting top floor is home to a beautiful master suite with views across the local area further complimented by a modern en-suite bathroom.

The property's allure extends beyond the interior as the charming garden provides an idyllic pace to relax with a patio area, decking to rear, outdoor lighting and useful side access. Parking is provided to the front with a paved driveway offering space for two vehicles.

This is a true gem for those seeking a harmonious blend of timeless elegance and modern comfort and internal viewings are highly recommended.



Open House South East



TOTAL AREA: APPROX. 152.2 SQ. METRES (1638.1 SQ. FEET)

