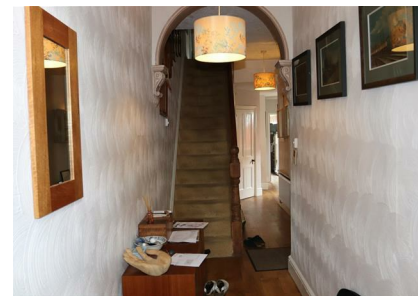


19 Botteville Road, Birmingham, B27 7YE

Offers Around £399,000

Council Tax Band: C



Welcome to Botteville Road, Birmingham - a charming location perfect for families and professionals alike. This large Victorian end terrace property boasts 4 bedrooms, 2 bathrooms, and 1 reception room, offering ample space for comfortable living.

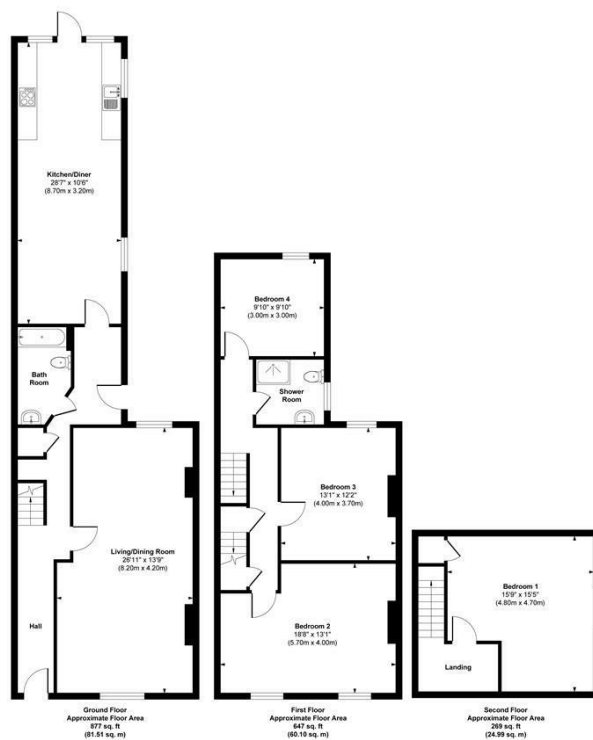
With 2,002 sq ft of living space, this house is full of character and charm, making it a truly unique find. The modern kitchen is perfect for whipping up delicious meals, while the excellent schools in the area make it ideal for families with children.

Conveniently located just a 10-minute walk from the train station, commuting is a breeze for those working in the city or beyond. Whether you're looking for a spacious family home or a stylish property with character, this Victorian end terrace on Botteville Road has it all. Don't miss out on the opportunity to make this house your home!



Open House West Midlands

BOTTEVILLE ROAD



Approx. Gross Internal Floor Area 1793 sq. ft / 166.60 sq. m
 Illustration for identification purposes only, measurements are approximate, not to scale.
 Produced by Elements Property

Energy Efficiency Rating		Current	Potential
Very energy efficient - lower running costs			
(92 plus) A			
(81-91) B			81
(69-80) C			
(55-68) D		63	
(39-54) E			
(21-38) F			
(1-20) G			
Not energy efficient - higher running costs			
England & Wales		EU Directive 2002/91/EC	