

Sapphire Drive, Cannock, WS11 7FY
Offers In The Region Of £295,000
Council Tax Band: C



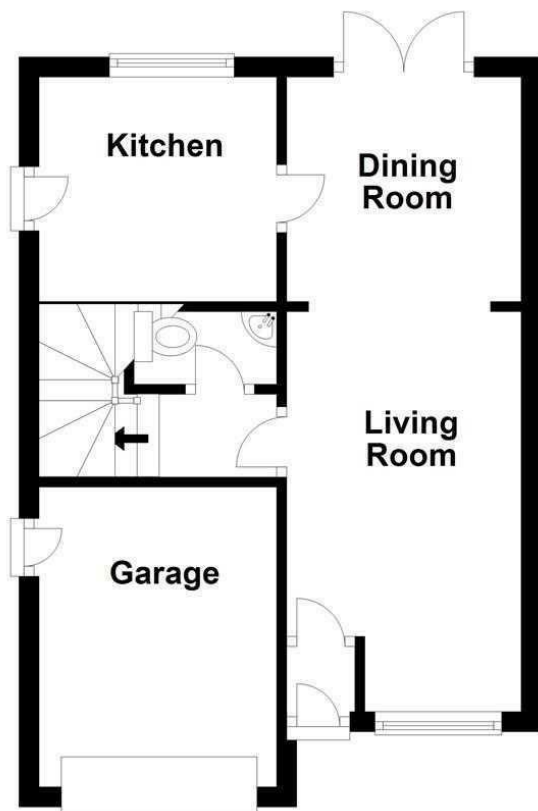
Nestled in the highly desirable Heath Hayes area of Cannock, this modern three-bedroom detached home offers contemporary living in a sought-after location. The ground floor features a well-appointed lounge, a dining room perfect for family gatherings, a modern kitchen, and a convenient guest WC. Ascending to the first floor, you'll find three generously sized bedrooms, with the master bedroom benefiting from an ensuite. Completing the upper level is a stylish family bathroom.

Adding to the appeal, this property includes an integral garage, providing both convenience and additional storage space. Outside, a driveway allows ample parking for multiple vehicles. The rear of the property unfolds into a private garden, featuring a well-manicured lawn and a delightful patio area—a perfect space for outdoor relaxation.

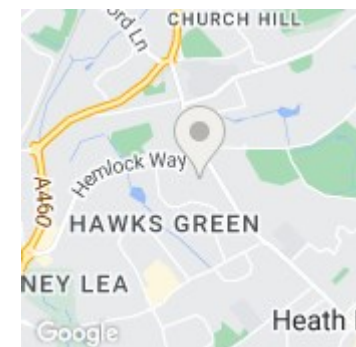
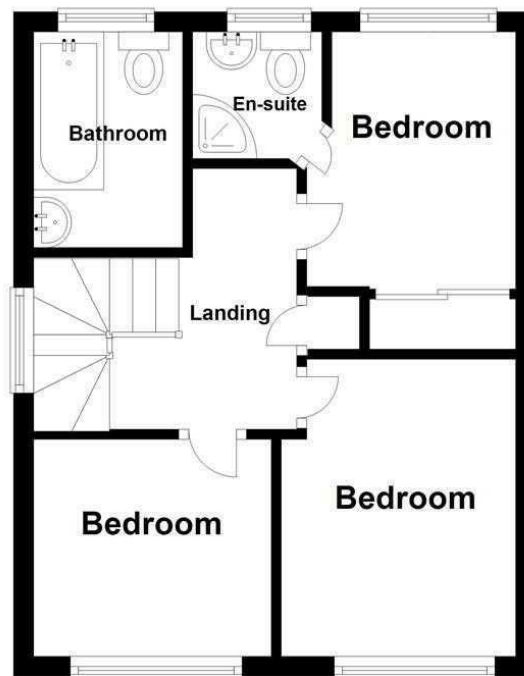


Open House Staffordshire

Ground Floor



First Floor



Energy Efficiency Rating		
	Current	Potential
Very energy efficient - lower running costs		
(92 plus) A		
(81-91) B		
(69-80) C	71	84
(55-68) D		
(39-54) E		
(21-38) F		
(1-20) G		
Not energy efficient - higher running costs		
England & Wales	EU Directive 2002/91/EC	