

'Winchester' Brettenham Grove, Old School Corner, Brettenham, Ipswich, Suffolk, IP7 7PB

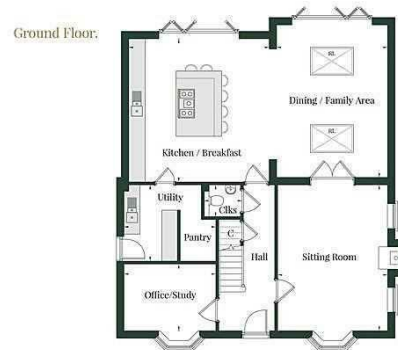
Price Guide £850,000



We are pleased to present: A brand new, high spec, 2,153 sq ft detached house, in select development of just 4, in small village, SE of Bury St Edmunds. Hall, Cloaks, Sitting Room - Woodburner, Study/Bed 5, Open-Plan Kitchen/Dining/Family Room, Utility, 4 Beds - 1 En-Suite, Bathroom, Gardens, Double Garage, Parking, VIEW ASAP.



2 Blackbourne Road, Elmswell, Bury St Edmunds, IP30 9UH
 01284 769691
info@coakleyandtheaker.co.uk
<https://www.coakleyandtheaker.co.uk/>



Energy Efficiency Rating		
	Current	Potential
<i>Very energy efficient - lower running costs</i>		
(92 plus) A		
(81-91) B		
(69-80) C		
(55-68) D		
(39-54) E		
(21-38) F		
(1-20) G		
<i>Not energy efficient - higher running costs</i>		
England & Wales	EU Directive 2002/91/EC	