



## The Ridgeway, W3

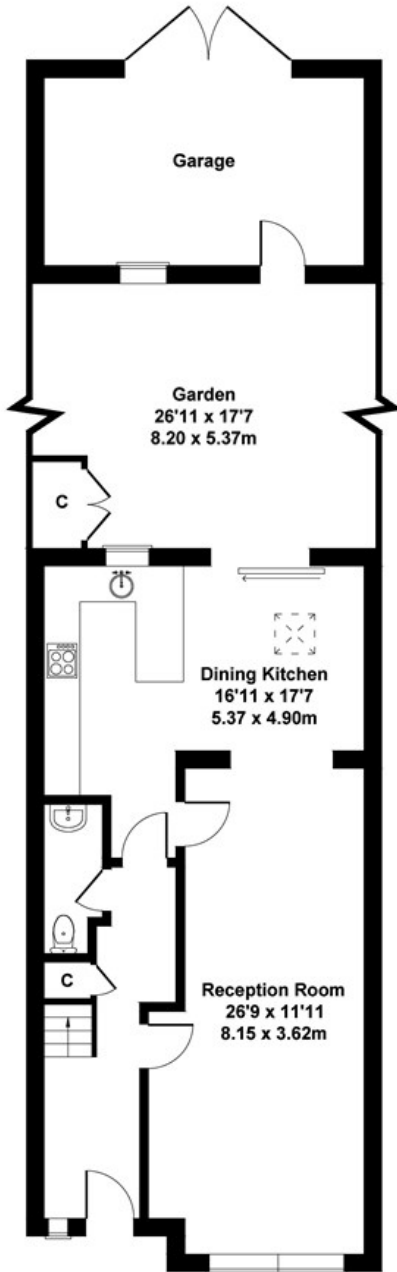
A beautifully presented four-bedroom family home in the sought-after Gunnersbury Triangle – Chain-Free

- Mid-Terrace
- Four bedrooms
- Over three floors
- Double garage to rear
- Newly refurbished
- No chain
- 'Gunnersbury Triangle'
- Close to Acton Town station
- Two bathrooms
- Gunnersbury Park close by

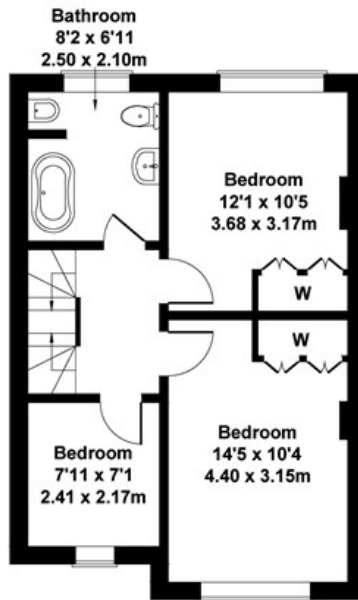
£850,000

# The Ridgeway

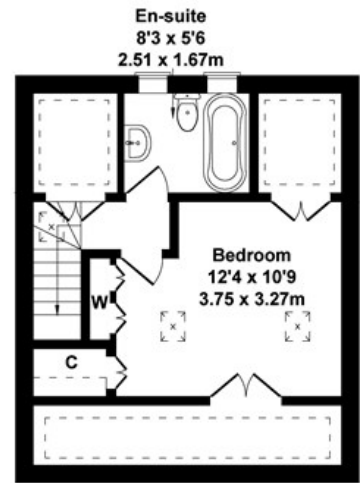
Approximate Gross Internal Area  
1464 sq ft - 136 sq m



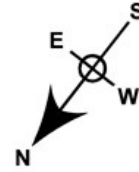
GROUND FLOOR



FIRST FLOOR



SECOND FLOOR



Not to Scale. Produced by The Plan Portal 2020  
For Illustrative Purposes Only.

Energy Efficiency Rating		
	Current	Potential
<i>Very energy efficient - lower running costs</i>		
(92 plus) <b>A</b>		
(81-91) <b>B</b>		<b>82</b>
(69-80) <b>C</b>		
(55-68) <b>D</b>	<b>68</b>	
(39-54) <b>E</b>		
(21-38) <b>F</b>		
(1-20) <b>G</b>		
<i>Not energy efficient - higher running costs</i>		
<b>England &amp; Wales</b>	EU Directive 2002/91/EC	