

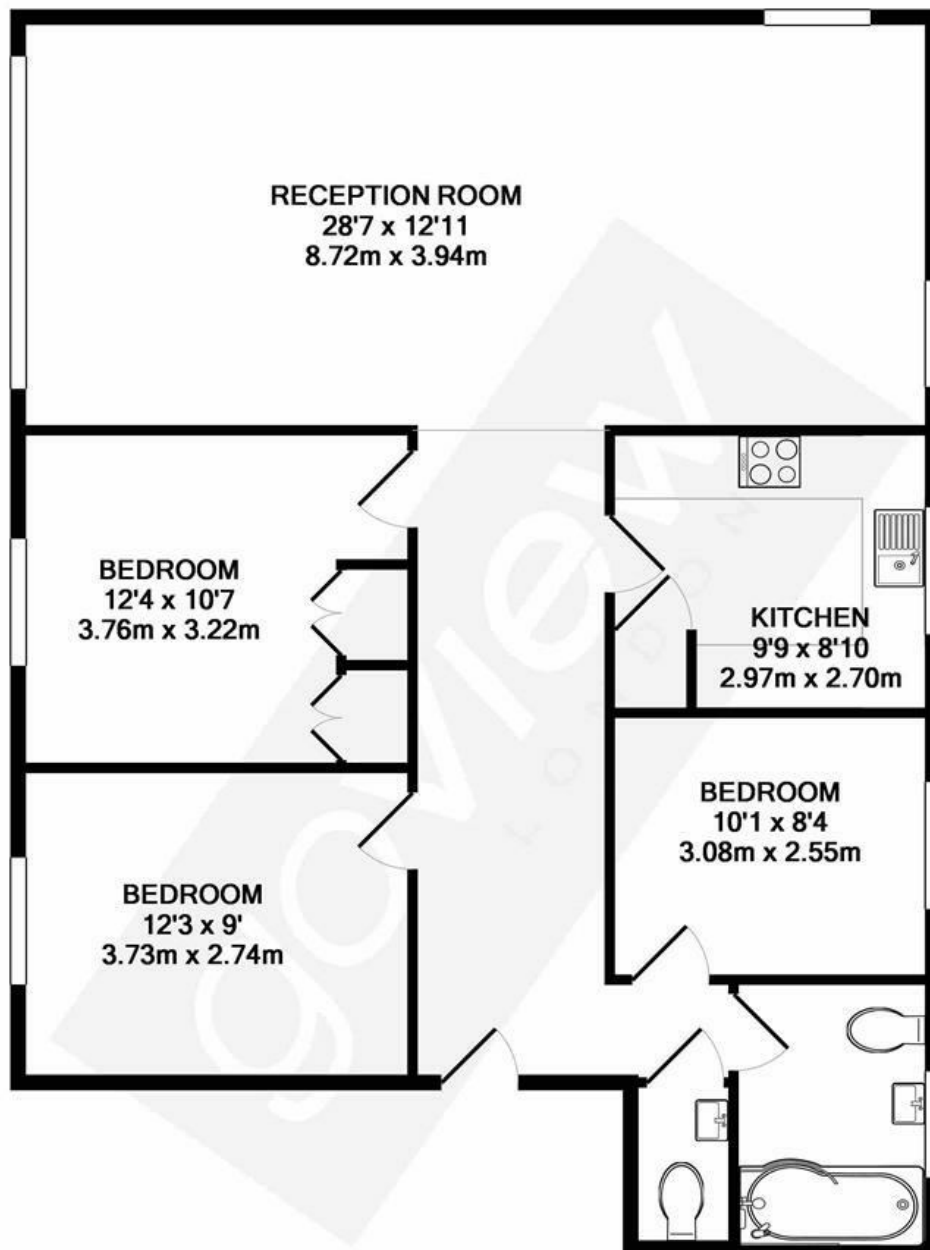


## Elm Avenue, W5

LONG LET. Well located close to transport links and the open spaces of Ealing common this well presented three bedroom flat boasts modern interiors and spacious rooms throughout.

- THREE DOUBLE BEDROOMS
- LARGE RECEPTION ROOM
- SMART BATHROOM
- STYLISH KITCHEN
- COMMUNAL GARDENS
- GREAT LOCATION

£2,547 PCM



**TOTAL APPROX. FLOOR AREA 989 SQ.FT. (91.9 SQ.M.)**

Whilst every attempt has been made to ensure the accuracy of the floor plan contained here, measurements of doors, windows, rooms and any other items are approximate and no responsibility is taken for any error, omission, or mis-statement. This plan is for illustrative purposes only and should be used as such by any prospective purchaser. The services, systems and appliances shown have not been tested and no guarantee as to their operability or efficiency can be given

Made with Metropix ©2019

Energy Efficiency Rating		
	Current	Potential
Very energy efficient - lower running costs		
(92 plus) <b>A</b>		
(81-91) <b>B</b>		
(69-80) <b>C</b>		
(55-68) <b>D</b>		
(39-54) <b>E</b>		
(21-38) <b>F</b>		
(1-20) <b>G</b>		
Not energy efficient - higher running costs		
<b>England &amp; Wales</b>	EU Directive 2002/91/EC	