

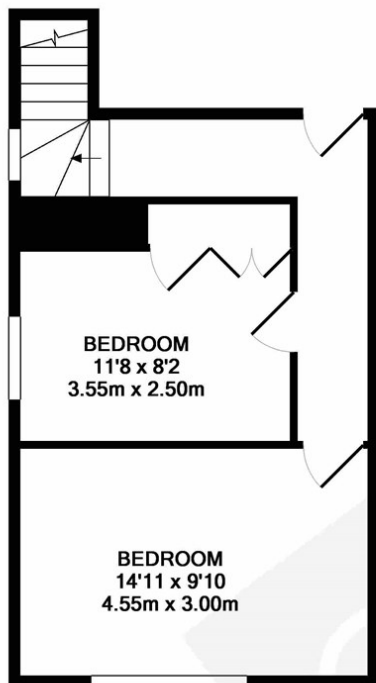


Denbigh Road, W13

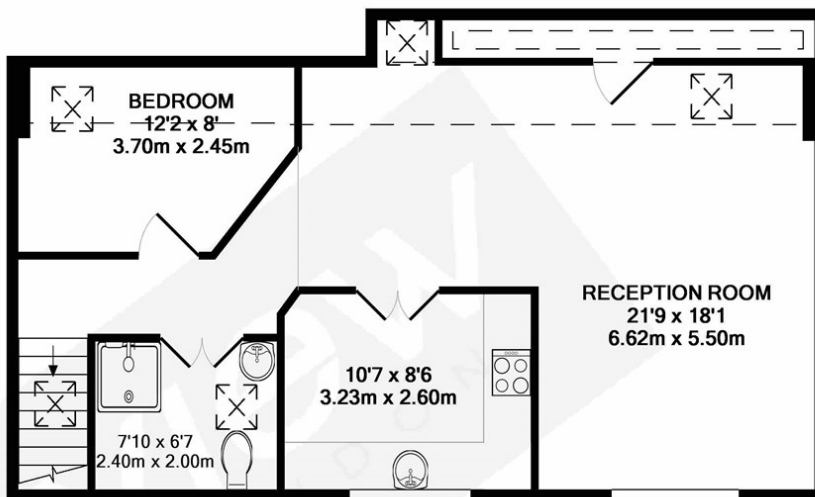
LONG LET. This spacious three bedroom flat set offers generous living space throughout including a lovely reception room with ample space for dining.

- THREE SPACIOUS BEDROOMS
- COMMUNAL GARDEN
- CLOSE TO STATION
- GREAT LOCATION
- MODERN KITCHEN
- OFF STREET MARKET

£2,798 PCM



GROUND FLOOR
APPROX. FLOOR
AREA 355 SQ.FT.
(33.0 SQ.M.)



1ST FLOOR
APPROX. FLOOR
AREA 638 SQ.FT.
(59.3 SQ.M.)

TOTAL APPROX. FLOOR AREA 994 SQ.FT. (92.3 SQ.M.)

Whilst every attempt has been made to ensure the accuracy of the floor plan contained here, measurements of doors, windows, rooms and any other items are approximate and no responsibility is taken for any error, omission, or mis-statement. This plan is for illustrative purposes only and should be used as such by any prospective purchaser. The services, systems and appliances shown have not been tested and no guarantee as to their operability or efficiency can be given
Made with Metropix ©2017

Energy Efficiency Rating		
	Current	Potential
Very energy efficient - lower running costs		
(92 plus) A		
(81-91) B		
(69-80) C		
(55-68) D		
(39-54) E		
(21-38) F		
(1-20) G		
Not energy efficient - higher running costs		
England & Wales		EU Directive 2002/91/EC