



Broughton Court, W13

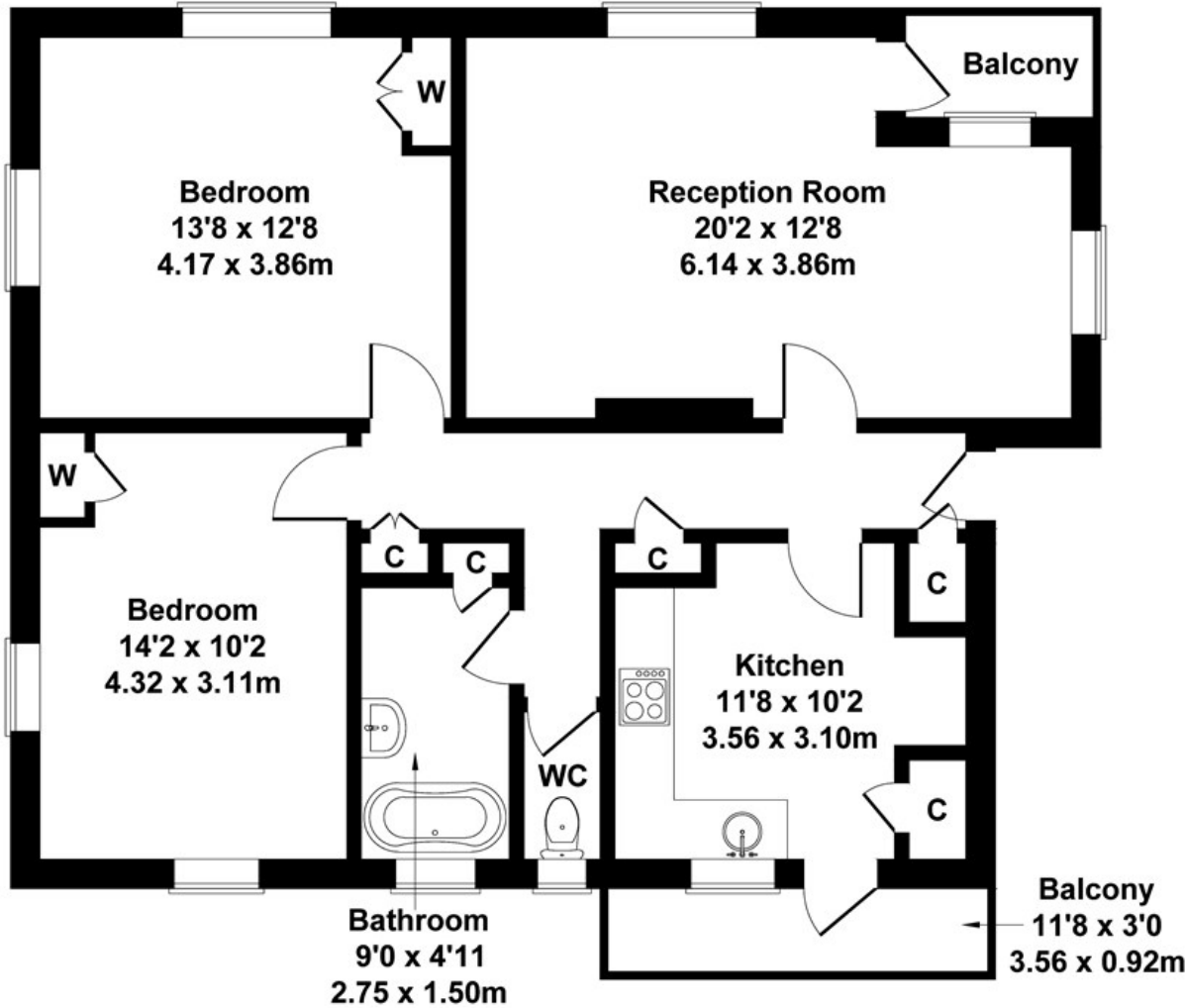
LONG LET. This modern two bedroom apartment boasts panoramic views and is set within a superb development in the heart of West Ealing, moments from Ealing Broadway.

- HOT WATER & HEATING INCLUDED
- PANORAMIC VIEWS
- CLOSE TO STATION
- PRIVATE BALCONIES
- LARGE RECEPTION ROOM
- COMMUNAL GARDENS
- TWO BEDROOM APARTMENT
- GREAT LOCATION

£1,900 PCM

Broughton Court

Approximate Gross Internal Area
861 sq ft - 80 sq m



FIRST FLOOR

Not to Scale. Produced by The Plan Portal 2021
For Illustrative Purposes Only.

| Energy Efficiency Rating | | |
|---|-------------------------|-----------|
| | Current | Potential |
| Very energy efficient - lower running costs | | |
| (92 plus) A | | |
| (81-91) B | 81 | 83 |
| (69-80) C | | |
| (55-68) D | | |
| (39-54) E | | |
| (21-38) F | | |
| (1-20) G | | |
| Not energy efficient - higher running costs | | |
| England & Wales | EU Directive 2002/91/EC | |