

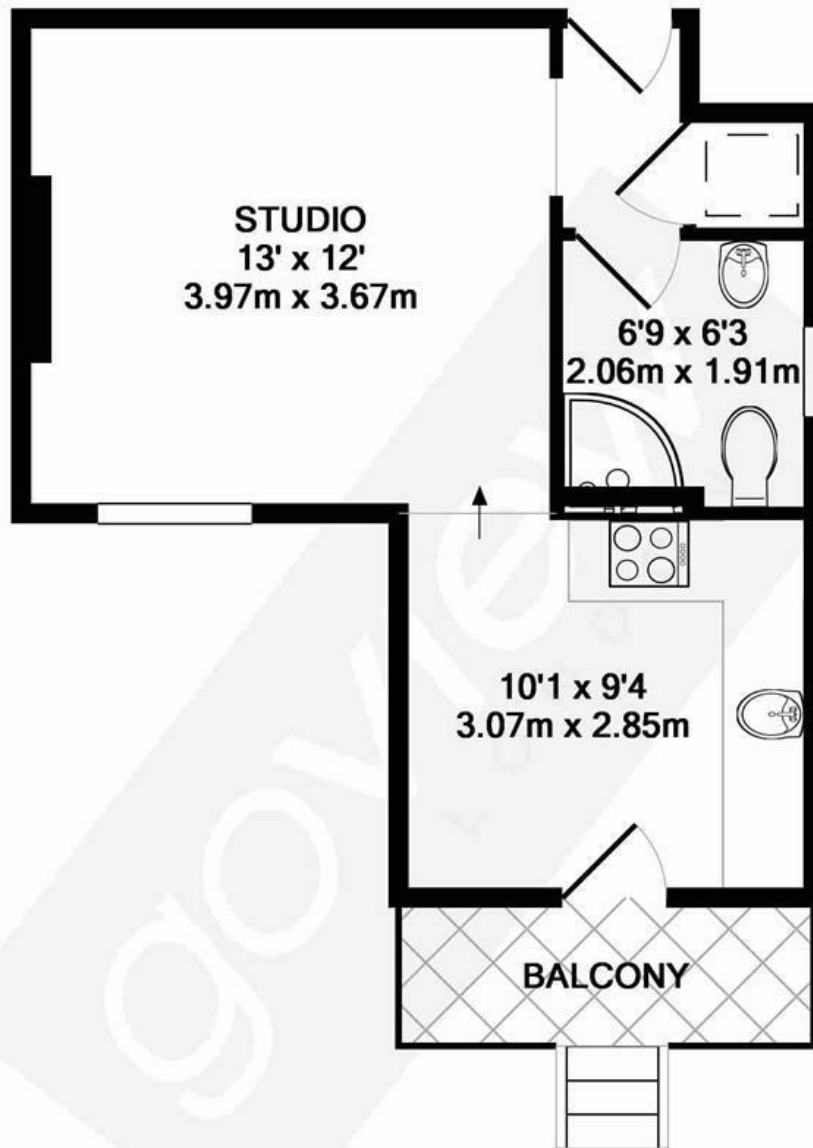


## Argyle Road, W13

LONG LET. This large studio apartment is maintained to a very high standard and boasts a great location close to local transport links.

- CLOSE TO AMENITIES
- LARGE STUDIO ROOM
- SEPARATE EAT IN KITCHEN
- STYLISH BATHROOM
- COMMUNAL GARDENS
- CLOSE TO STATION

£1,450 PCM



TOTAL APPROX. FLOOR AREA 321 SQ.FT. (29.8 SQ.M.)

Whilst every attempt has been made to ensure the accuracy of the floor plan contained here, measurements of doors, windows, rooms and any other items are approximate and no responsibility is taken for any error, omission, or mis-statement. This plan is for illustrative purposes only and should be used as such by any prospective purchaser. The services, systems and appliances shown have not been tested and no guarantee as to their operability or efficiency can be given

Made with Metropix ©2017

Energy Efficiency Rating		Current	Potential
Very energy efficient - lower running costs			
(92 plus) <b>A</b>			
(81-91) <b>B</b>			
(69-80) <b>C</b>			
(55-68) <b>D</b>			
(39-54) <b>E</b>			
(21-38) <b>F</b>			
(1-20) <b>G</b>			
Not energy efficient - higher running costs			
<b>England &amp; Wales</b>	EU Directive 2002/91/EC		