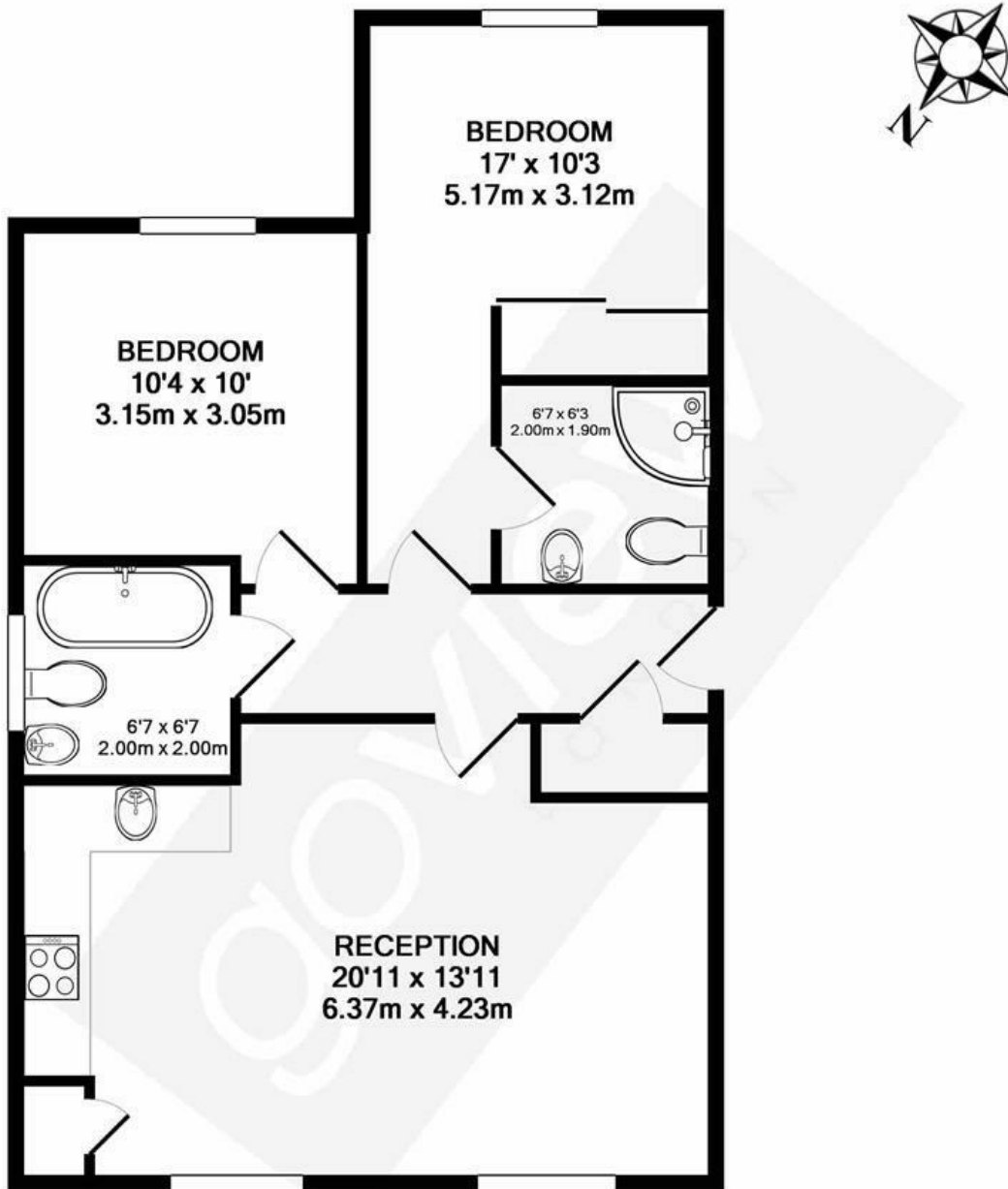




Pendlewood Close, W5

LONG LET. This exceptionally spacious two bedroom flat boasts stunning interiors well located close to transport links and local amenities.

- TWO DOUBLE BEDROOMS
- SPACIOUS RECEPTION ROOM
- MODERN KITCHEN
- TWO STYLISH BATHROOMS
- OFF STREET PARKING
- GREAT LOCATION



TOTAL APPROX. FLOOR AREA 663 SQ.FT. (61.6 SQ.M.)

Whilst every attempt has been made to ensure the accuracy of the floor plan contained here, measurements of doors, windows, rooms and any other items are approximate and no responsibility is taken for any error, omission, or mis-statement. This plan is for illustrative purposes only and should be used as such by any prospective purchaser. The services, systems and appliances shown have not been tested and no guarantee as to their operability or efficiency can be given
 Made with Metropix ©2017

Energy Efficiency Rating		
	Current	Potential
<i>Very energy efficient - lower running costs</i>		
(92 plus) A		
(81-91) B		
(69-80) C		
(55-68) D		
(39-54) E		
(21-38) F		
(1-20) G		
<i>Not energy efficient - higher running costs</i>		
England & Wales	EU Directive 2002/91/EC	