

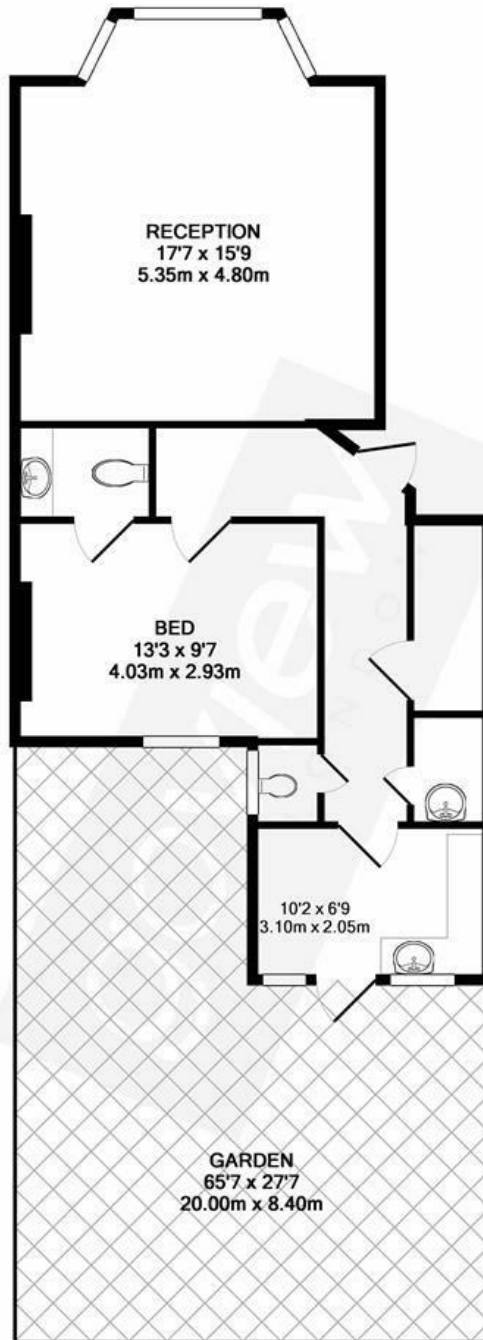


## Ranelagh Road, W5

LONG LET. Located close to a wide variety of shops, bars and restaurants this extra large one bedroom flat boasts a great location within easy reach to both Ealing Broadway and the open spaces of Ealing Common.

- LARGE ONE BEDROOM FLAT
- SEPARATE KITCHEN
- GENEROUS RECEPTION ROOM
- UPPER GROUND FLOOR
- GREAT LOCATION
- DIRECT ACCESS TO COMMUNAL GARDEN

£1,650 PCM



TOTAL APPROX. FLOOR AREA 618 SQ.FT. (57.4 SQ.M.)

Whilst every attempt has been made to ensure the accuracy of the floor plan contained here, measurements of doors, windows, rooms and any other items are approximate and no responsibility is taken for any error, omission, or mis-statement. This plan is for illustrative purposes only and should be used as such by any prospective purchaser. The services, systems and appliances shown have not been tested and no guarantee as to their operability or efficiency can be given  
 Made with Metropix ©2017

Energy Efficiency Rating		
	Current	Potential
<i>Very energy efficient - lower running costs</i>		
(92 plus) <b>A</b>		
(81-91) <b>B</b>		
(69-80) <b>C</b>		
(55-68) <b>D</b>		
(39-54) <b>E</b>		
(21-38) <b>F</b>		
(1-20) <b>G</b>		
<i>Not energy efficient - higher running costs</i>		
<b>England &amp; Wales</b>	EU Directive 2002/91/EC	