

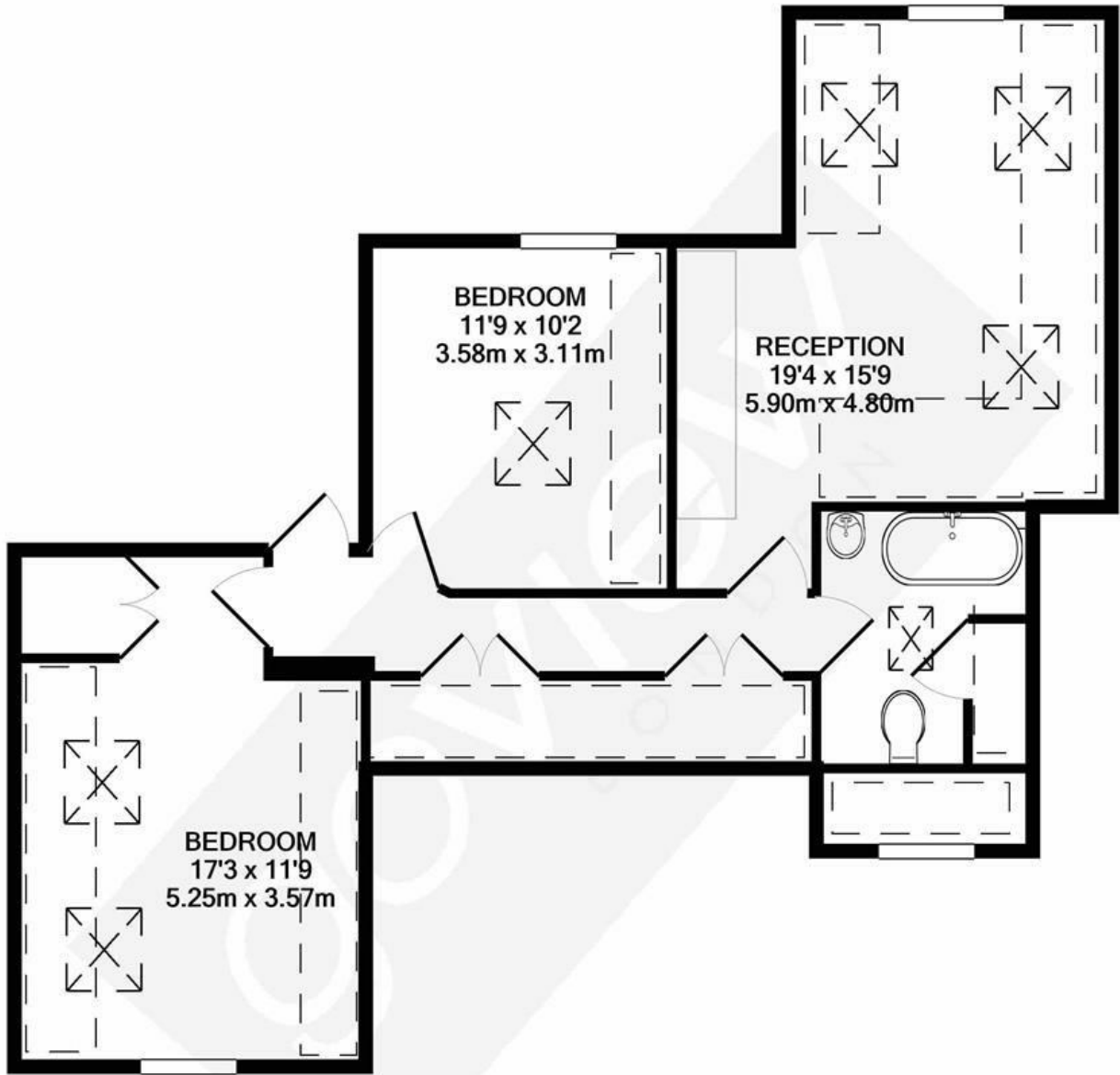


Gunnersbury Avenue, W5

LONG LET. This stunning two double bedroom flat offers a contemporary living space, located moments from the shops and amenities of Ealing and Acton.

- TWO DOUBLE BEDROOMS
- GREAT LOCATION
- CLOSE TO TRANSPORT
- AMPLE STORAGE
- MODERN KITCHEN
- FULLY FURNISHED

£1,900 PCM



TOTAL APPROX. FLOOR AREA 716 SQ.FT. (66.5 SQ.M.)

Whilst every attempt has been made to ensure the accuracy of the floor plan contained here, measurements of doors, windows, rooms and any other items are approximate and no responsibility is taken for any error, omission, or mis-statement. This plan is for illustrative purposes only and should be used as such by any prospective purchaser. The services, systems and appliances shown have not been tested and no guarantee as to their operability or efficiency can be given

Made with Metropix ©2020



Energy Efficiency Rating		
	Current	Potential
<i>Very energy efficient - lower running costs</i>		
(92 plus) A		
(81-91) B		
(69-80) C		
(55-68) D		
(39-54) E		
(21-38) F		
(1-20) G		
<i>Not energy efficient - higher running costs</i>		
England & Wales	EU Directive 2002/91/EC	