



The Lammas, 58 Woodfield Rd Development, W5

A large stunning two double bedroom two bath period conversion making up part of the modern, awe-inspiring 58 Woodfield Rd development.

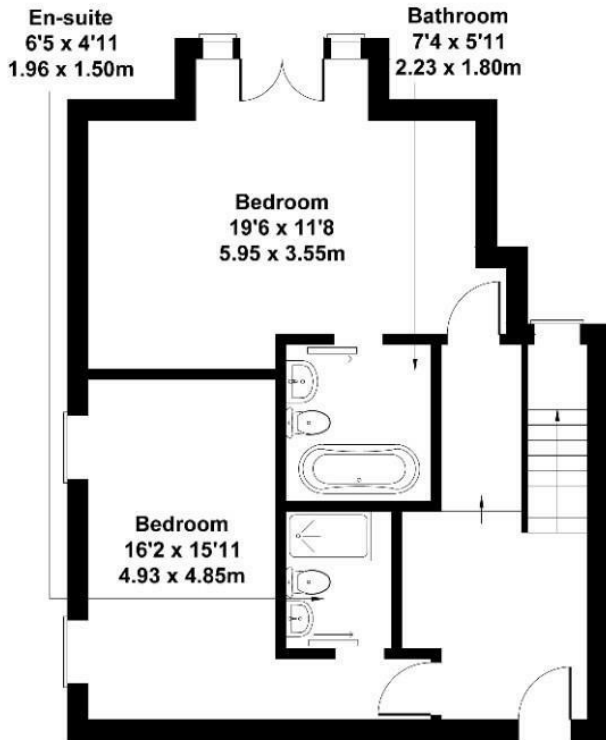
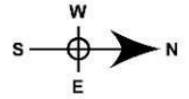
Spilt over two levels in bespoke condition, the property is made up of two generous double bedrooms, one with en-suite. The lower level consists of a large open-plan living area (30'11 x 18'11) leading directly to your own private terrace. Further benefits are a separate WC, storage and communal gardens that accompany the building.

£750,000

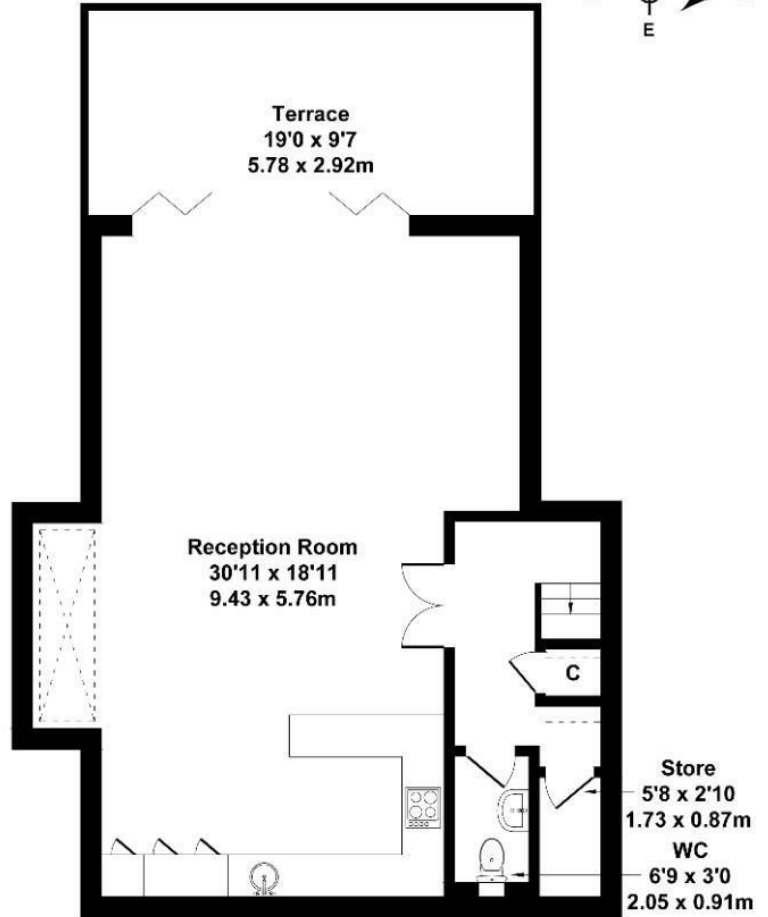
- New Conversion
- Two double bedrooms
- Two bathrooms
- Spilt Level
- Sought after location
- Bespoke finish
- No Chain
- Over 1300sq ft
- Patio area
- Short distance from Ealing Broadway

Woodfield Road

Approximate Gross Internal Area
1335 sq ft - 124 sq m
(Excluding Terrace)



GROUND FLOOR



FIRST FLOOR

Not to Scale. Produced by The Plan Portal 2024
For Illustrative Purposes Only.

Energy Efficiency Rating		
	Current	Potential
Very energy efficient - lower running costs		
(92 plus) A		
(81-91) B		
(69-80) C	80	80
(55-68) D		
(39-54) E		
(21-38) F		
(1-20) G		
Not energy efficient - higher running costs		
England & Wales	EU Directive 2002/91/EC	