



Windmill Road, London

A large two-bedroom, two-bathroom garden flat set on Windmill Road which is just a short walk from Northfields tube station.

In brief, the property is 700 sq ft in size, in good condition and has two large double bedrooms, two bathrooms (one en-suite) and large open plan kitchen/reception with French doors leading directly onto a large private westerly facing garden.

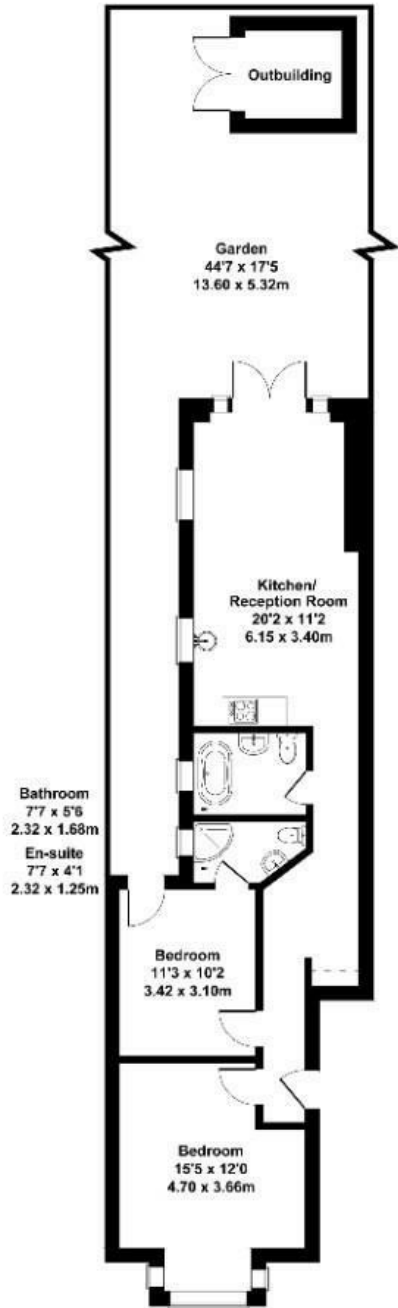
Further benefits are great light, potential to extend and no onward chain.

£479,950

- Period conversion
- Garden flat
- Two double bedrooms
- Two bathrooms
- No chain
- Large private westerly facing garden
- Potential to extend
- Low service charges
- Short walk to Northfield Tube station
- Great light

Windmill Road

Approximate Gross Internal Area
700 sq ft - 65 sq m
(Excluding Outbuilding)



GROUND FLOOR

Not to Scale. Produced by The Plan Portal 2024
For Illustrative Purposes Only.

Energy Efficiency Rating		
	Current	Potential
<i>Very energy efficient - lower running costs</i>		
(92 plus) A		
(81-91) B	78	78
(69-80) C		
(55-68) D		
(39-54) E		
(21-38) F		
(1-20) G		
<i>Not energy efficient - higher running costs</i>		
England & Wales	EU Directive 2002/91/EC	