

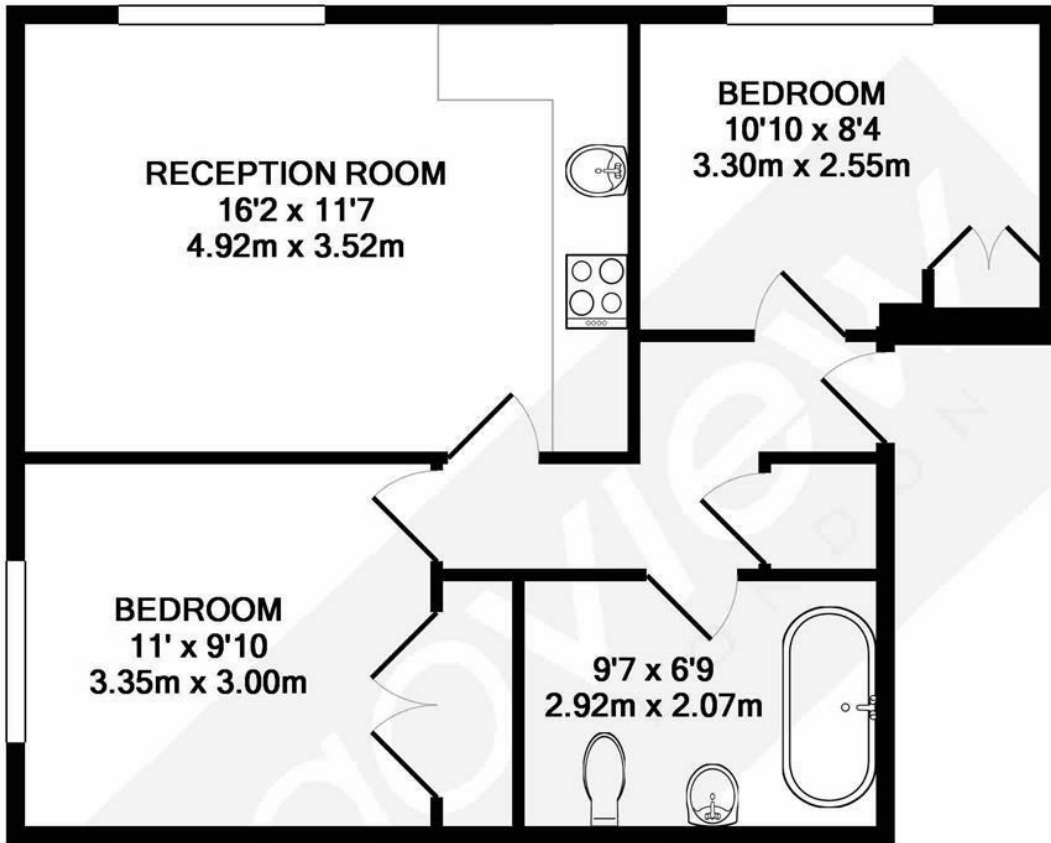


Rowan Close, W5

This spacious, two bedroom apartment in a small purpose built apartment building presented to a great standard and boasts off street parking and a great location close to the open spaces of Gunnersbury Park and benefiting from lots of transport amenities all near by.

- Newly refurbished
- Central location
- Two double bedrooms
- Small apartment building
- First floor
- Off street parking
- Long lease 148 years
- Transport links close by

£335,000



TOTAL APPROX. FLOOR AREA 518 SQ.FT. (48.1 SQ.M.)

Whilst every attempt has been made to ensure the accuracy of the floor plan contained here, measurements of doors, windows, rooms and any other items are approximate and no responsibility is taken for any error, omission, or mis-statement. This plan is for illustrative purposes only and should be used as such by any prospective purchaser. The services, systems and appliances shown have not been tested and no guarantee as to their operability or efficiency can be given

Made with Metropix ©2017



Energy Efficiency Rating		Current	Potential
Very energy efficient - lower running costs			
(92 plus) A			
(81-91) B			
(69-80) C		76	80
(55-68) D			
(39-54) E			
(21-38) F			
(1-20) G			
Not energy efficient - higher running costs			
England & Wales	EU Directive 2002/91/EC		