



Birkdale Road, W5

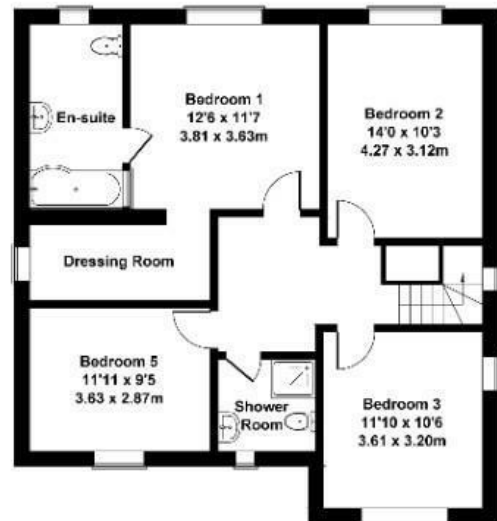
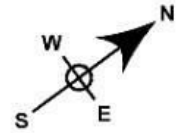
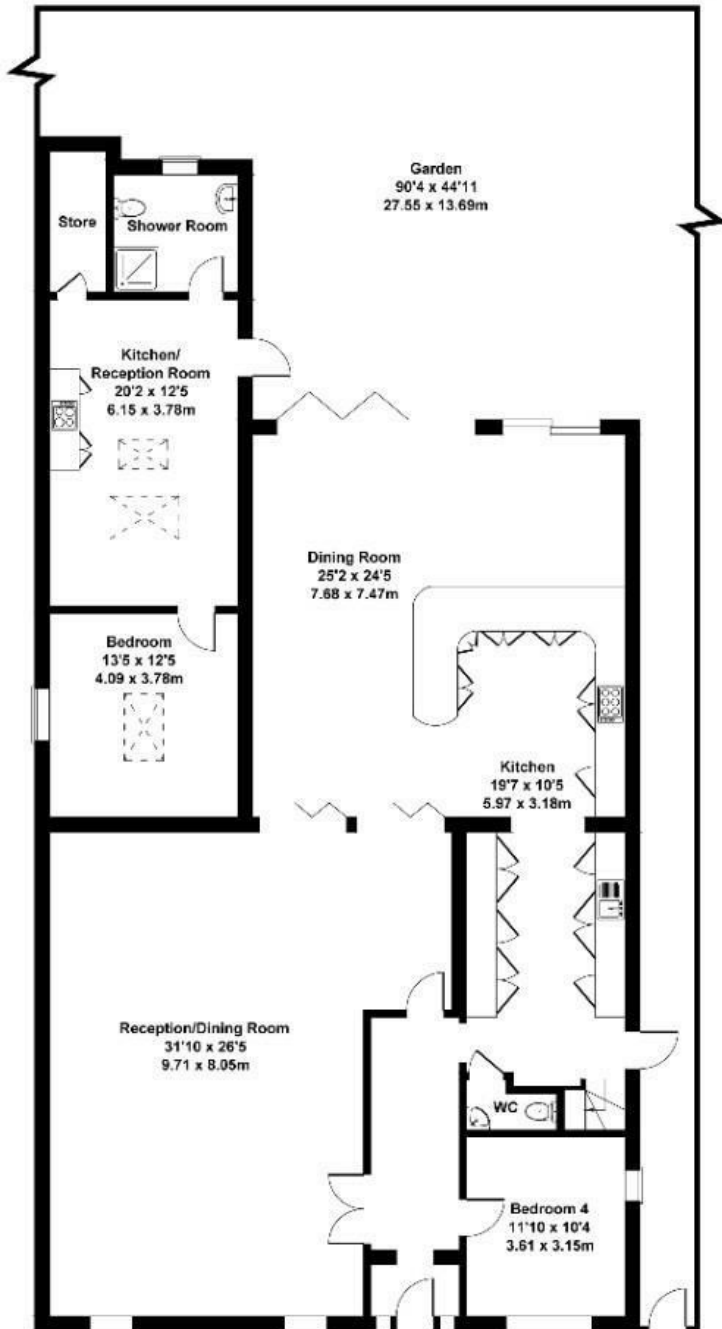
LONG LET. A large detached five bedroom property with open plan living and private parking is situated in an ideal location in the heart of Ealing.

- Large family home
- Parking for multiple cars
- 1 bedroom annex included
- ideal location
- great for transport links
- Large garden

£5,000

Birkdale Road

Approximate Gross Internal Area
3310 sq ft - 308 sq m



GROUND FLOOR

FIRST FLOOR

Not to Scale. Produced by The Plan Portal 2024
For Illustrative Purposes Only.

Energy Efficiency Rating		Current	Potential
Very energy efficient - lower running costs			
(92 plus) A			
(81-91) B			
(69-80) C			
(55-68) D			
(39-54) E			
(21-38) F			
(1-20) G			
Not energy efficient - higher running costs			
England & Wales	EU Directive 2002/91/EC		