



Windsor Road, London

Situated in a beautiful period building is this large two-bedroom garden flat located moments from Ealing Broadway centre.

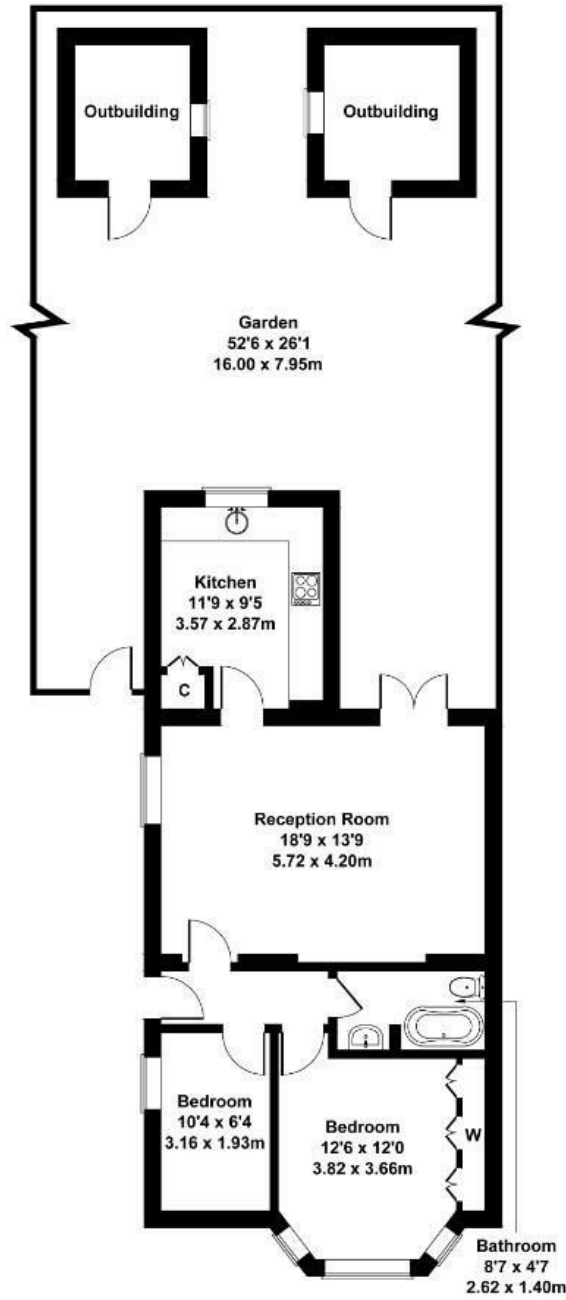
The property has recently been completely refurbished to a bespoke standard and comes with large lateral reception measuring (18'9 X 13'9), a spacious new kitchen, large double bedroom with bay windows and second bedroom along with a stylish family sized bathroom. The property has good ceiling height and access to its own large private garden.

- Garden flat
- Two bedrooms
- Central Ealing Broadway
- Allocated parking space
- Period conversion
- Large separate kitchen
- Newly refurbished
- Short walk to multiple transport links
- 50 plus foot private garden
- No chain

£599,950

Windsor Road

Approximate Gross Internal Area
678 sq ft - 63 sq m
(Excluding Garden/Outbuildings)



LOWER GROUND FLOOR

Not to Scale. Produced by The Plan Portal 2024
For Illustrative Purposes Only.

Energy Efficiency Rating		Current	Potential
Very energy efficient - lower running costs			
(92 plus) A			
(81-91) B			
(69-80) C			77
(55-68) D		62	
(39-54) E			
(21-38) F			
(1-20) G			
Not energy efficient - higher running costs			
England & Wales	EU Directive 2002/91/EC		