



Corfton Road, London

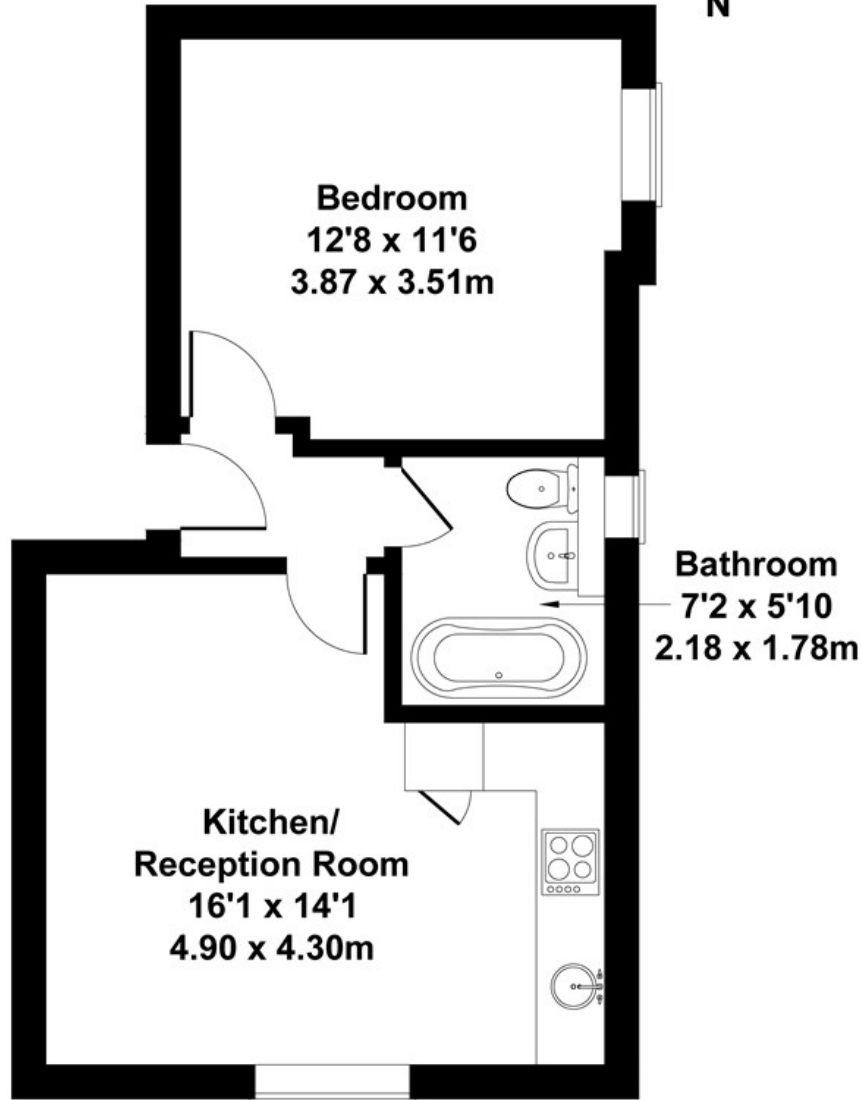
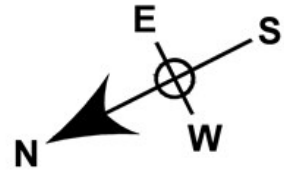
A stunning newly converted one-bedroom period conversion, part of a collection of five high end apartments set in this grand period building, situated on the highly desirable Corfton Road adjacent to Ealing Cricket grounds.

- Period conversion
- One bedroom
- Bespoke newly converted finish
- First floor
- Short stroll to Ealing Broadway
- No chain
- One of Ealing's prime roads
- Close to transport links

£415,000

Corfton Rd

Approximate Gross Internal Area
420 sq ft - 39 sq m



FIRST FLOOR

Not to Scale. Produced by The Plan Portal 2023
For Illustrative Purposes Only.

Energy Efficiency Rating		Current	Potential
<i>Very energy efficient - lower running costs</i>			
(92 plus) A			
(81-91) B			
(69-80) C			
(55-68) D		59	71
(39-54) E			
(21-38) F			
(1-20) G			
<i>Not energy efficient - higher running costs</i>			
England & Wales	EU Directive 2002/91/EC		