



## 100 Dashwood House, Longfield Avenue, London, W5 2JU

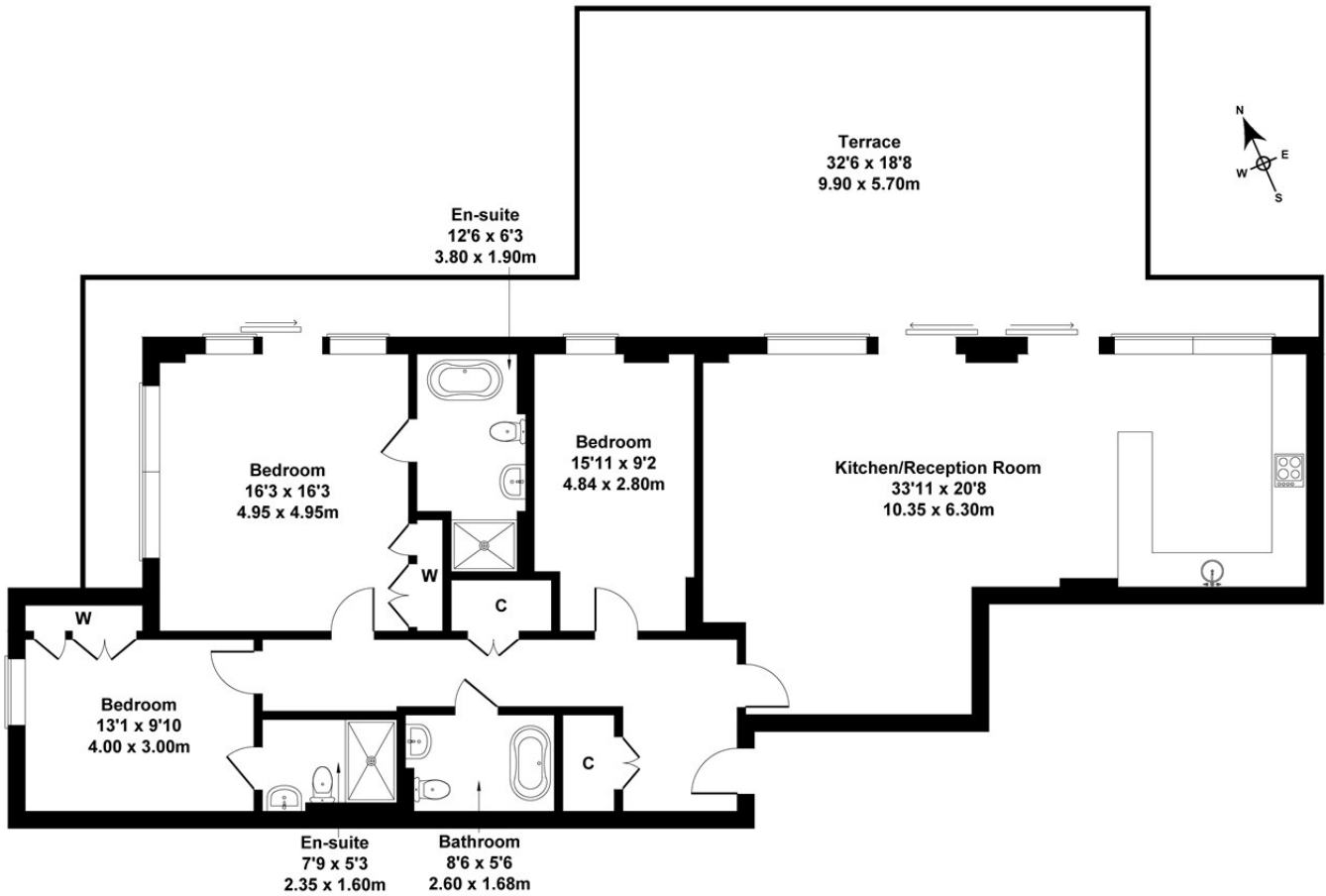
An awe-inspiring modern apartment, touching 1500 sq ft, within the prestigious Dicken's Yard development in the heart of Ealing. This three-bedroom, three-bathroom apartment, with wrap-around balcony and large terrace is set on the ninth floor providing far-reaching views across London and has underground secure parking.

- Large three bedroom apartment
- Three bathrooms
- Wraparound terrace
- No chain
- Secure underground parking
- Ninth Floor
- Heart of Ealing Broadway
- Close to transport links
- Air Conditioning
- Crossrail

£1,650,000

# Dashwood House

Approximate Gross Internal Area  
1496 sq ft - 139 sq m



**NINTH FLOOR**

Not to Scale. Produced by The Plan Portal 2022  
For Illustrative Purposes Only.

Energy Efficiency Rating		Current	Potential
Very energy efficient - lower running costs			
(92 plus) <b>A</b>			
(81-91) <b>B</b>		<b>83</b>	<b>83</b>
(69-80) <b>C</b>			
(55-68) <b>D</b>			
(39-54) <b>E</b>			
(21-38) <b>F</b>			
(1-20) <b>G</b>			
Not energy efficient - higher running costs			
<b>England &amp; Wales</b>	EU Directive 2002/91/EC		