



Tom Parry

Tryfer House, Tryfer Terrace, Harlech, LL46 2YR

- Stunning 3 bedroom end of terrace cottage
 - Beautifully presented throughout
 - Packed with character features
 - Rear courtyard
 - Minutes from Harlech Town Centre
 - Successful holiday let

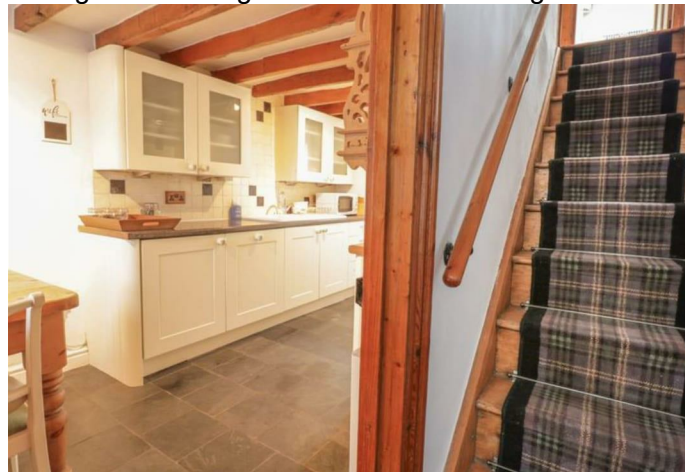
Welcome to Tryfer Terrace, Harlech - a charming and historic location that boasts a picturesque beach setting for this traditional Welsh stone cottage. This delightful property offers 3 bedrooms, making it perfect for a family or those who enjoy having extra space.

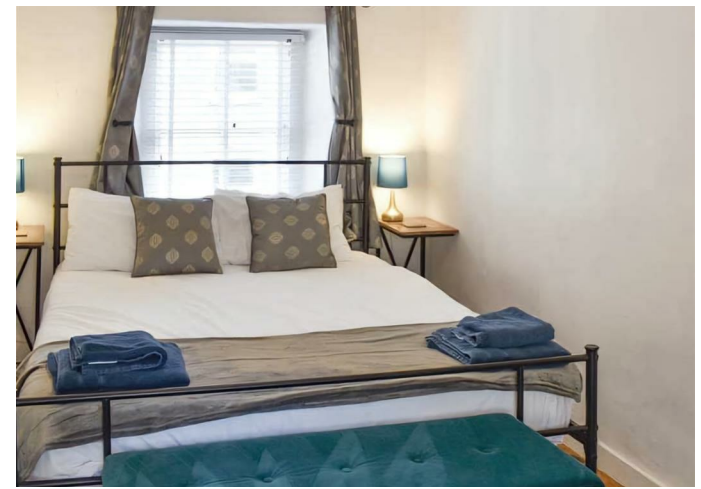
Situated in a historic area, this house exudes character and charm, providing a unique living experience for its new owners. The property is ready to move into, allowing you to settle in and start enjoying the beauty of the surroundings immediately.

Proximity to shops and cafes, convenience is at your doorstep. Imagine coming home to this quaint cottage, nestled in a location that offers both tranquillity and a sense of heritage.

Don't miss out on the opportunity to own a piece of history in this idyllic setting. Embrace the warmth and comfort of this Welsh stone cottage and make Tryfer Terrace your new home.

Harlech boasts a magnificent cliff top castle and cultural centre, together with numerous artisan shops, cafes and restaurants. Harlech's pretty stone houses and shops along the high street offer a unique opportunity to live in an Area of Outstanding Natural Beauty in Snowdonia National Park. The Cambrian Coastline railway provides excellent links to nearby towns including Porthmadog and Barmouth with regular services to the Midlands and beyond.







NOTE: The Agents have not tested any electrical installations, central heating system or other appliances and services referred to in these particulars and no warranty is given as to their working ability.
THESE PARTICULARS ARE THOUGHT TO BE MATERIALLY CORRECT THOUGH THEIR ACCURACY IS NOT GUARANTEED AND THEY DO NOT FORM PART OF ANY CONTRACT.



Valid until 13 July 2030	Certificate number 0474-2804-7238-2990-8691
Energy rating 	1, Tryfer Terrace HARLECH LL46 2YR

