



Tom Parry

Crib Y Gwynt, Heol Y Bryn, Harlech, LL46 2TU

Tom Parry

£595,000

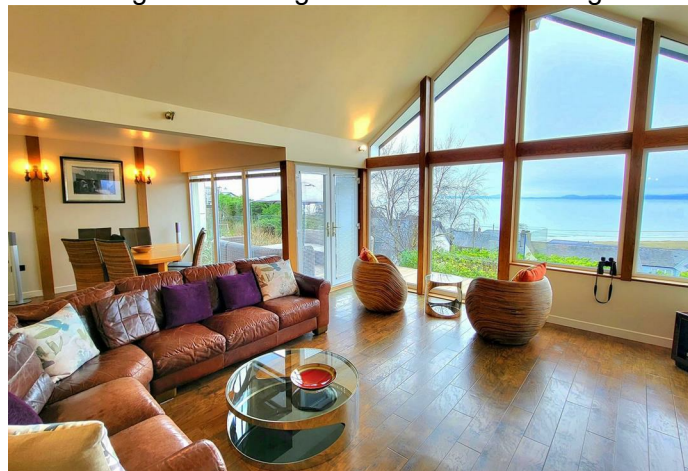
- Stunning panoramic views over Cardigan Bay, the Snowdonia Mountain Range and beyond
 - Bespoke, uniquely designed detached property on a double plot completed in 2009
- Contemporary open plan layout with lounge/diner/kitchen all benefitting from amazing views
 - Three well proportioned bedrooms, 2 with en-suite and 1 further single bedroom
 - Balcony with glass balustrade to preserve the magnificent views
 - Luxury fixtures and fittings throughout
- Karndean flooring with underfloor heating, ensuring comfort even in the chilliest of winters.
 - Large garage and plentiful parking

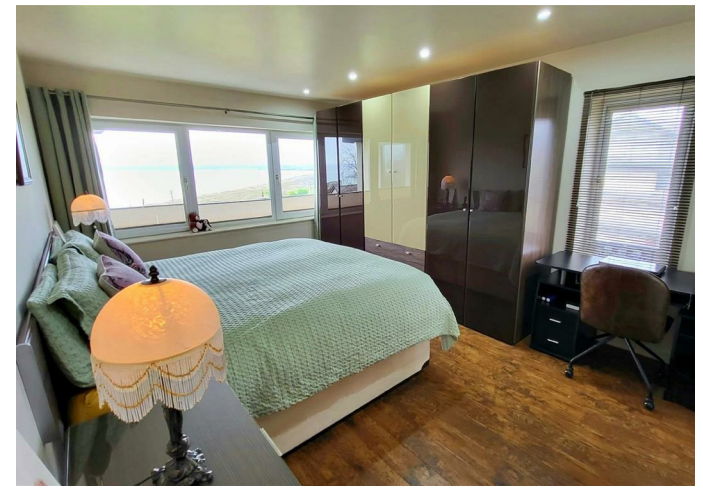
Nestled in sought-after upper Harlech, Crib Y Gwynt - a unique and modern home stands as a testament to craftsmanship and elegance. Boasting breath-taking panoramic views of Harlech beach, the Llyn Peninsula and the Snowdonia mountain range each window frames a postcard-worthy vista.

As you step inside, you're greeted by a light and open hallway with a beautiful oak staircase, a centrepiece that embodies the meticulous attention to detail evident in every aspect of this home's design. Flow through to the wow factor open plan living area where a wall of bespoke engineered steel framed windows captures the magnificent vistas out over the balcony and beyond. Dine al-fresco here in the summer or star gaze in winter months. Turn around and wander into the stylish kitchen with an array of storage topped by hardy Corian work surfaces. There are 3 sumptuously styled double bedrooms - 2 with en-suites and a further single room currently used as an office. All bathrooms are classic in design and timeless. Indeed, with its high-quality fittings and unparalleled craftsmanship throughout, this residence offers not just a house, but a sanctuary where every detail has been thoughtfully curated to create a truly exceptional living experience.

Superb location - the property is situated within walking distance to the town and World Heritage castle, close to the blue flag beach of Harlech and Royal St David's Golf course.

Harlech boasts a magnificent cliff top castle and cultural centre, together with numerous artisan shops, cafes and restaurants. Harlech's pretty stone houses and shops along the high street offer a unique opportunity to live in an Area of Outstanding Natural Beauty in the Snowdonia National Park. The Cambrian Coastline railway provides excellent links to nearby towns including Porthmadog and Barmouth with regular services to the Midlands and beyond.







NOTE: The Agents have not tested any electrical installations, central heating system or other appliances and services referred to in these particulars and no warranty is given as to their working ability.
THESE PARTICULARS ARE THOUGHT TO BE MATERIALLY CORRECT THOUGH THEIR ACCURACY IS NOT GUARANTEED AND THEY DO NOT FORM PART OF ANY CONTRACT.

Floorplans are for identification purposes only and not to scale. Where measurements are shown, these are approximate and should not be relied on. Sanitary ware and kitchen fittings are representative only and approximate to actual shape, position and style. No liability is accepted in respect of any consequential loss arising from the use of this plan. Reproduced under licence from William Morris Energy Assessments. All rights reserved.
Plan produced using PlanItUp.

EPC Awaited

