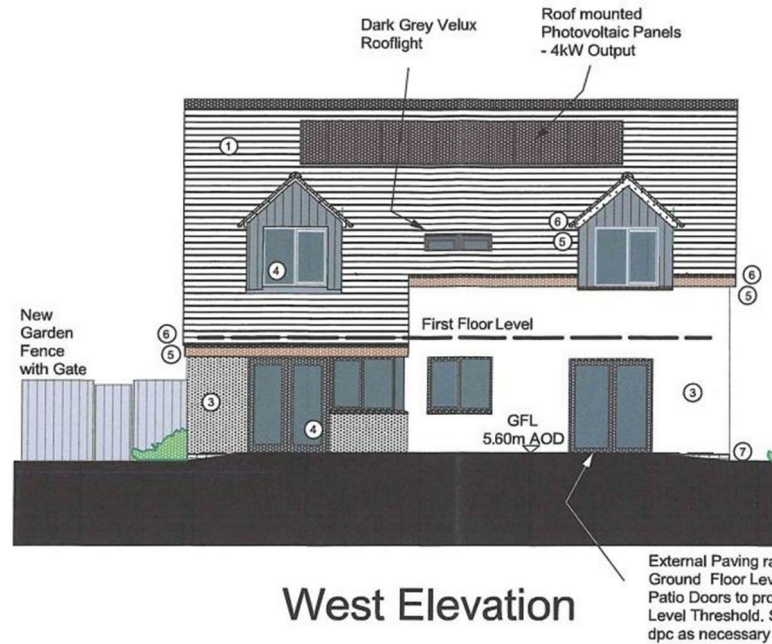


Tom Parry

Rule of Finishes
Reconstituted Slate
Blue/Black
Black stained Vertical
timber boarding
White Render
Woodgrain effect upvc
Windows & external
doors - Anthracite Grey
Colour
External Joinery trims
Softwood stained
Anthracite Grey
Rainwater Goods - Black
upvc
Blue/Black Engineering
brick Plinth.

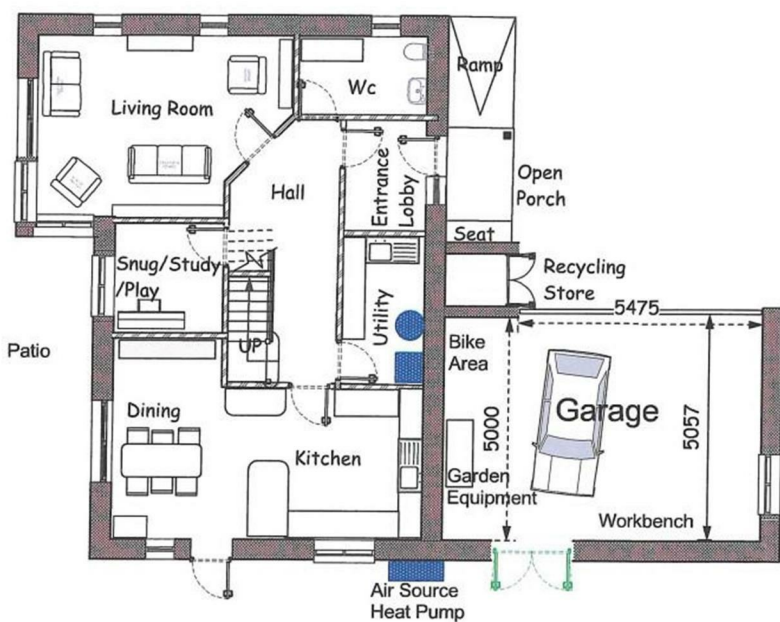


West Elevation

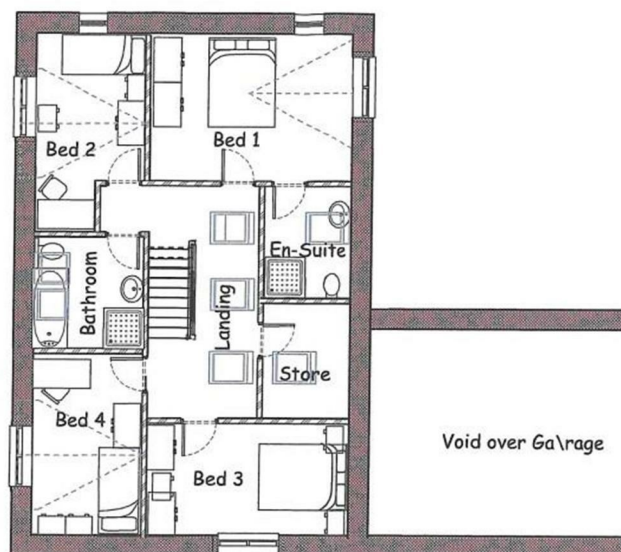
52 Cae Gwastad, Harlech, LL46 2GY

- Building plot for sale approximately 0.045HA
- Static caravan on site with services connected
- Newly granted full planning permission for the construction of a detached two storey 4 bedroom dwelling with integral garage
 - Large plot in sunny position
 - Hillside views
- Planning Application number NP5/61/661A
- Within walking distance of all local amenities
 - Located in sought after town of Harlech

£98,000



Ground Floor Plan
Floor Level to be 5.6m AOD



First Floor Plan



NOTE: The Agents have not tested any electrical installations, central heating system or other appliances and services referred to in these particulars and no warranty is given as to their working ability.

THESE PARTICULARS ARE THOUGHT TO BE MATERIALLY CORRECT THOUGH THEIR ACCURACY IS NOT GUARANTEED AND THEY DO NOT FORM PART OF ANY CONTRACT.



Tom Parry

01766 780883
tomparry.co.uk