



Tom Parry

Capel Bethel, Harlech, LL46 2SA

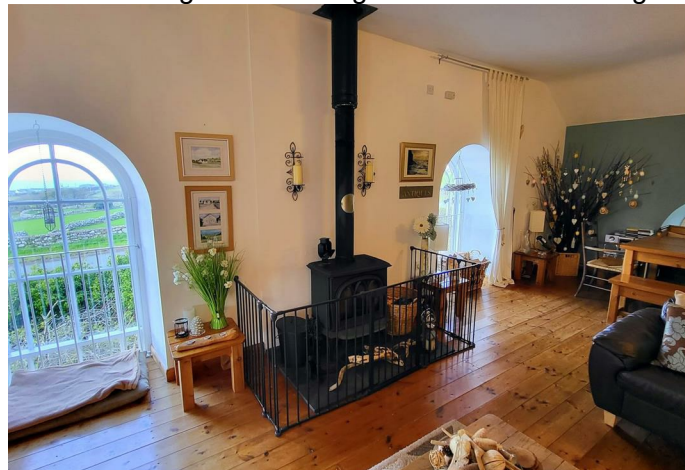
- Sympathetically converted chapel dating from 1867
 - Currently a 4 bedroom, 2 bathroom property
- Additional studio annex to the basement which could provide additional family living or an income.
 - Stunning views over Cardigan Bay coastline and beyond.
- Located in sought after hamlet of Llanfair, 2 miles from castle town of Harlech.
 - Free, unrestricted parking next door to chapel
 - Large mature garden with a wealth of planting.
- Opportunity to purchase additional land adjoining the chapel

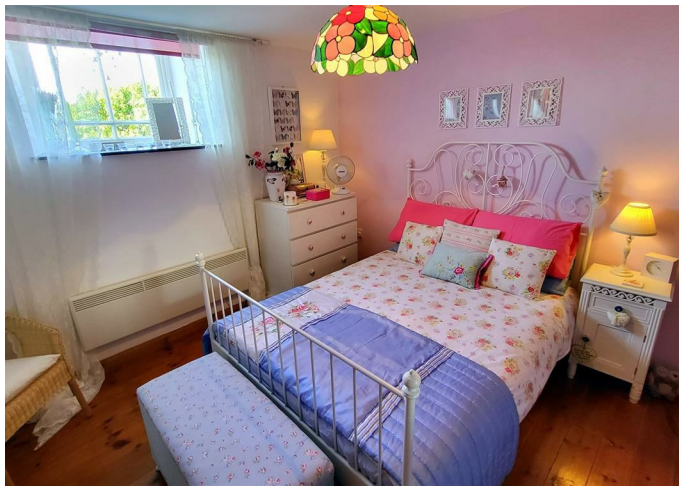
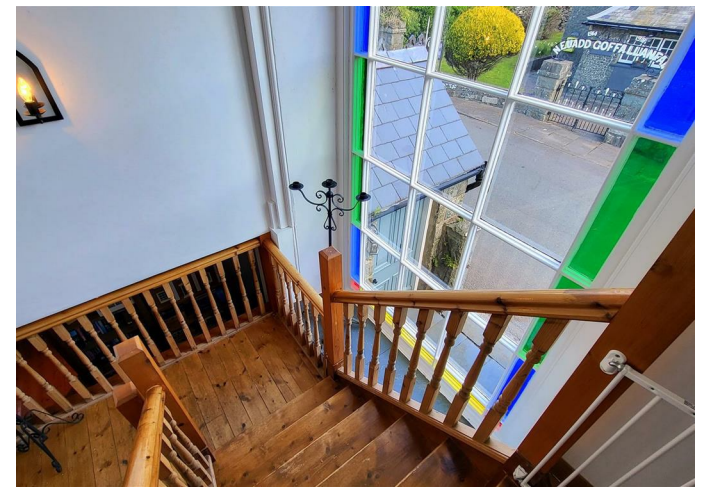
Take a pew and have a look at this beautifully converted chapel for sale. Located approximately two miles from Harlech, which boasts a majestic cliff top castle, renowned golf course and cultural centre, together with numerous artisan shops, cafes and restaurants. Harlech's pretty stone houses and shops along the high street offer a unique opportunity to live in an Area of Outstanding Natural Beauty in Snowdonia National Park. The Cambrian Coastline railway provides excellent links to nearby towns including Porthmadog and Barmouth with regular services to the Midlands and beyond.

Built in 1867 for a total of £264.25 Capel Bethel was still holding regular religious services and Sunday School classes until late 1990's. With beautifully high ceilings, magnificent arched windows and architectural style, the building is steeped in spiritual history. It has been sensitively converted to a 4 bedroom family house with 2 bathrooms to the ground floor and a large contemporary open plan living/dining space to the first floor. It is flooded in light, combining today's comforts with yesterday's charm and will appeal to the most discerning homeowner. Externally the chapel has a large, mature garden with a wealth of plants, trees and shrubs including fruit and vegetable beds. Parking is available next door to the property however an opportunity has arisen recently to purchase a plot of land of approximately 1/8 of an acre to the right of the property, this land could be utilised for parking and garden.

In addition the chapel has a delightful studio annex in the basement which could provide additional family living or a healthy rental income.

This is a dream home with a difference - a welcoming old stone building with stunning views over the Cardigan Bay coastline - and early viewings are recommended.

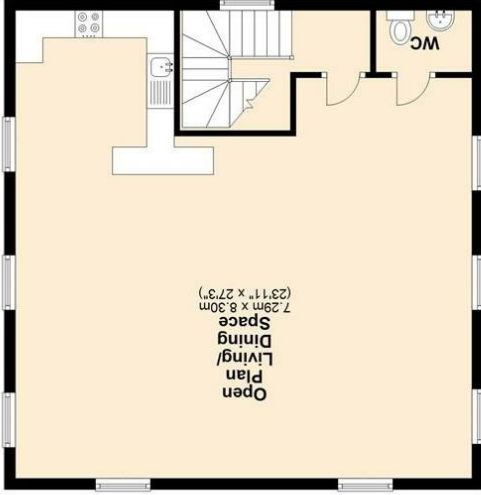
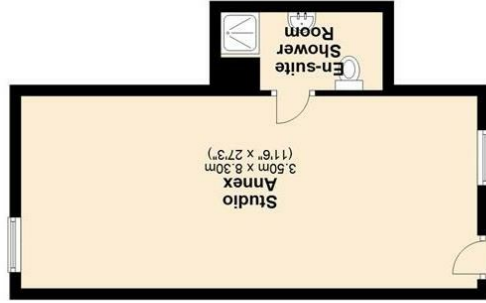
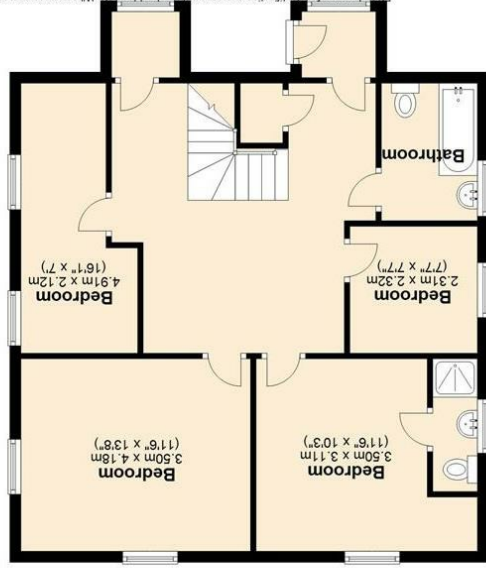






NOTE: The Agents have not tested any electrical installations, central heating system or other appliances and services referred to in these particulars and no warranty is given as to their working ability.
THESE PARTICULARS ARE THOUGHT TO BE MATERIALLY CORRECT THOUGH THEIR ACCURACY IS NOT GUARANTEED AND THEY DO NOT FORM PART OF ANY CONTRACT.

Floorplans are for identification purposes only and not to scale. Where measurements are shown, these are approximate and should not be relied on. Sanitary ware and kitchen fittings are representative only and approximate to actual shape, position and style. No liability is accepted in respect of any consequential loss arising from the use of this plan. Reproduced under licence from William Morris Energy Assessments. All rights reserved.
Plan produced using Planip.



Capel Bethel Llanwr HAFLE ECH LL46 2SA	Energy rating F	Valid until: 10 August 2023	Certificate number: 0380-2381-9280-2207-0921
---	---------------------------	--------------------------------	--

Property type

