

Bartram & Co

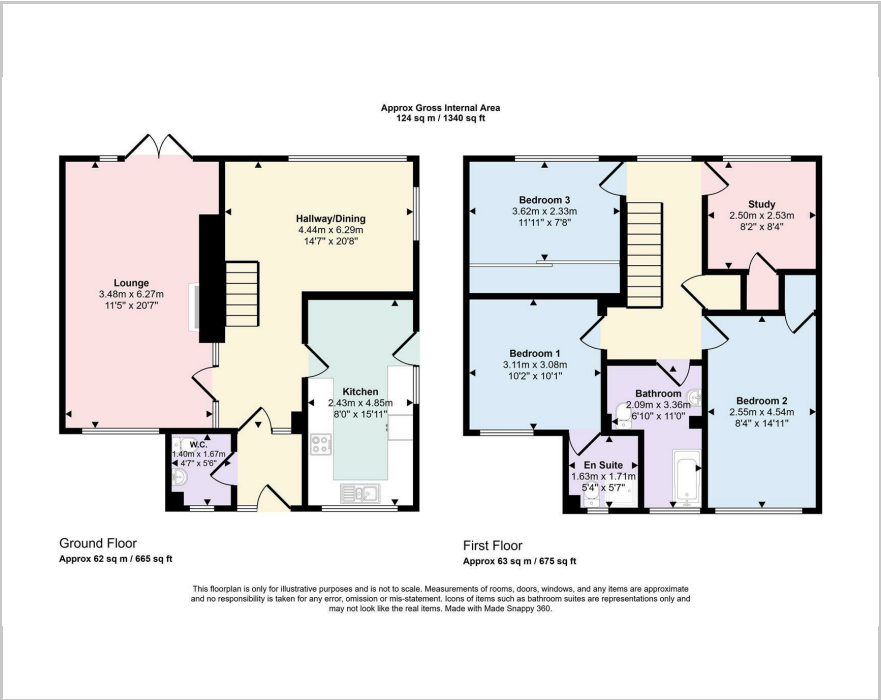


4 Home Close, Greens Norton, NN12 8AY

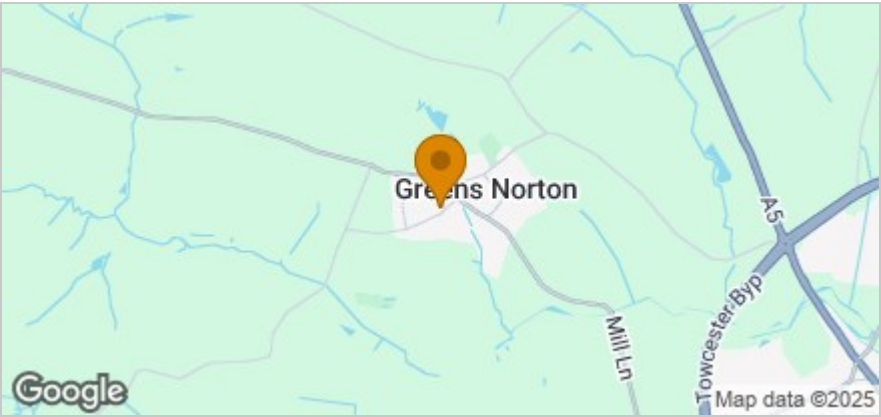
£485,000 - Freehold

 4  2  2  C
Council Tax Band: E Service Charge: x Ground Rent: x

Floor Plan



Area Map



These particulars, whilst believed to be accurate are set out as a general outline only for guidance and do not constitute any part of an offer or contract. Intending purchasers should not rely on them as statements of representation of fact, but must satisfy themselves by inspection or otherwise as to their accuracy. No person in this firms employment has the authority to make or give any representation or warranty in respect of the property.

Town Hall, 86 Watling Street East, Towcester, Northamptonshire, NN12 6BS
Tel: 01327 359164 Email: towcestersales@bartramandco.co.uk <https://www.bartramandco.co.uk>

Accommodation

- An Established Detached Family Home
- In Sought After Village Location
- Four Bedrooms, En-Suite to Master
- Family Bathroom, Double Glazing
- Porch, Hall, Lounge & Dining Room
- Fitted Kitchen with Integrated Appliances
- Driveway and Double Length Garage
- Lawned Gardens Front and Rear
- EPC Energy Rating: C
- Council Tax Band: E

Viewing

Please contact our Towcester Office on 01327 359164 if you wish to arrange a viewing appointment for this property or require further information.

Energy Efficiency Graph

