

Bartram & Co

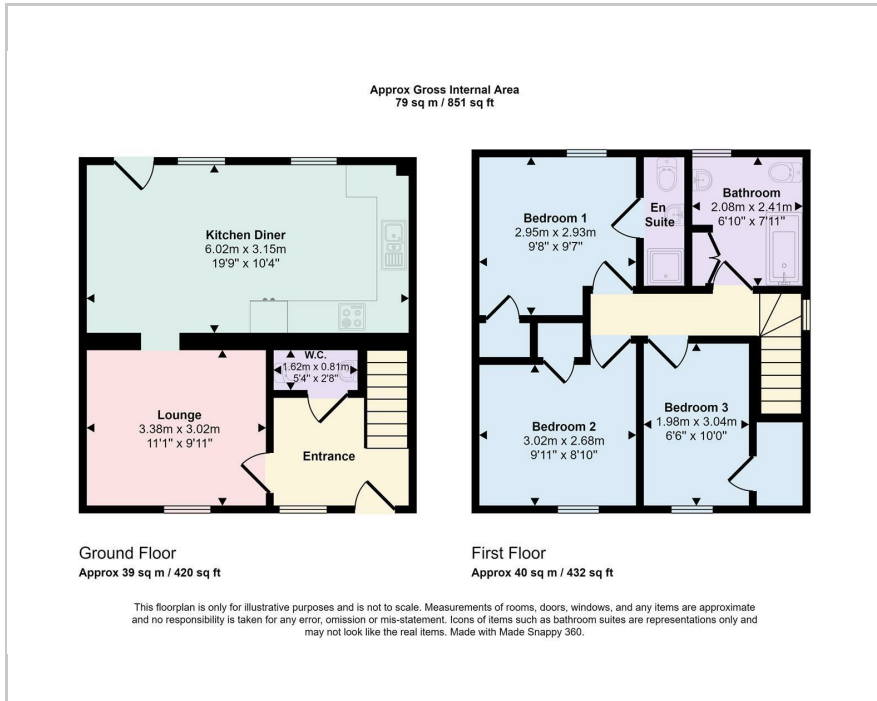


Bury House Moat Lane, Towcester, NN12 6AD

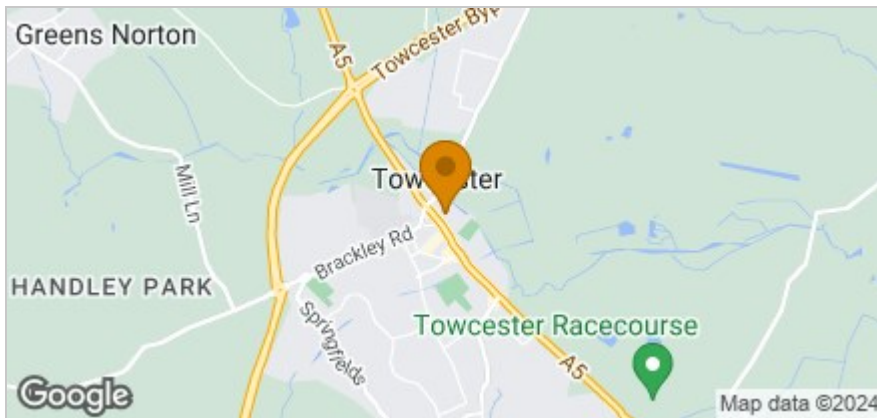
£425,000 - Freehold

 3  2  1  C
Council Tax Band: B Service Charge: x Ground Rent: x

Floor Plan



Area Map



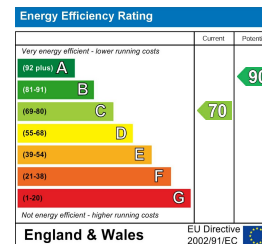
Accommodation

- Semi-Detached Victorian Cottage
- Hallway, W.C., Sitting Room
- Fitted Kitchen/Breakfast Room
- Three Bedrooms, Built-in Wardrobes
- En-suite Shower, Family Bathroom
- Fully Enclosed Rear Garden
- Off Road Parking To Side
- Close to Centre and Countryside
- EPC Energy Rating: C
- Council Tax Band: B

Viewing

Please contact our Towcester Lettings Office on 01327359164 if you wish to arrange a viewing appointment for this property or require further information.

Energy Efficiency Graph



These particulars, whilst believed to be accurate are set out as a general outline only for guidance and do not constitute any part of an offer or contract. Intending purchasers should not rely on them as statements of representation of fact, but must satisfy themselves by inspection or otherwise as to their accuracy. No person in this firm's employment has the authority to make or give any representation or warranty in respect of the property.

Town Hall, 86 Watling Street East, Towcester, Northamptonshire, NN12 6BS

Tel: 01327359164 Email: towcesterlettings@bartramandco.co.uk <https://www.bartramandco.co.uk>