

# Bartram & Co



75 Foxholes Close

Deanshanger, Milton Keynes, MK19 6HA

Asking Price £345,000 - Freehold



Council Tax Band: C Service Charge: x Ground Rent: x

## 75 Foxholes Close

Deanshanger, Milton Keynes, MK19 6HA

Bartram & Co are please to present this three bedroom semi-detached property in the village of Deanshanger. This property offers good sized family accommodation with gas fired central heating, an enclosed rear garden and single garage. The accommodation comprises, hallway, cloakroom, fitted kitchen, lounge, conservatory/dining room, three bedrooms and a family bathroom. There is a small area of garden to the front with an enclosed rear garden and a single garage to the side with parking in front.

### LOCATION:

The village of Deanshanger lies a mile to the west of the A5 and 2 miles from the popular market town of Stony Stratford. Road communications to Milton Keynes are excellent and the M1 can be accessed at junction 14 south of Milton Keynes or junction 15 at Collingtree just south of Northampton. There is an excellent Intercity rail service at Milton Keynes. Facilities in the village include a post office, churches, shops, pubs, infant/junior school and secondary school.

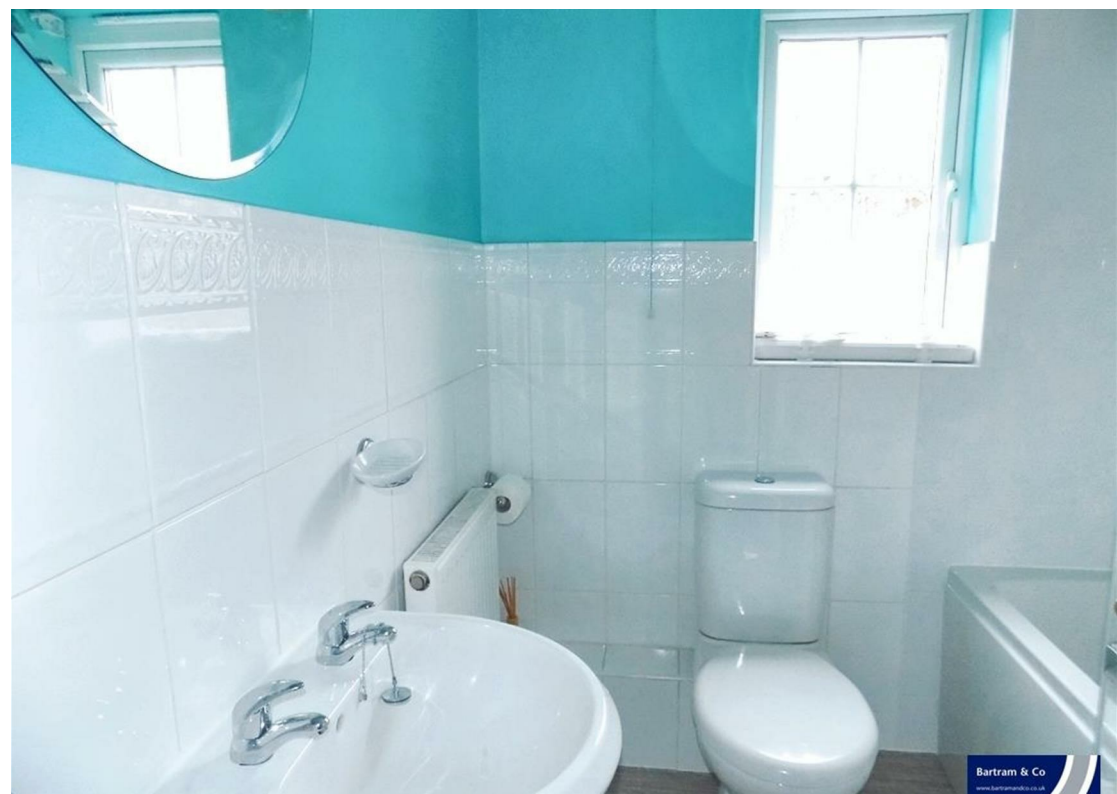
### HALLWAY

1/2 glazed door to front. Heating thermostat. Radiator. Stairs to first floor.

### FITTED KITCHEN

6'4" x 9'9" (1.930 x 2.973)

Upvc window to front. Range of wall and floor units in Beech with 1 1/2 bowl stainless steel sink unit. Built in dishwasher, oven with hob and extractor, fridge freezer and washing machine. Gas fired boiler.



**CLOAKROOM:**

Upvc window with obscure glazing to the front. 2pce White suite. Radiator.

**LOUNGE:**

13'0" x 14'9" (3.958 x 4.484)  
Stone fire surround with electric fire. T.V. point. Telephone point. Radiator. Doors to;

**DINING/CONSERVATORY:**

12'2" x 11'5" (3.698 x 3.487)  
Of Upvc and brick construction with under floor heating. Radiator.

**BEDROOM ONE:**

9'8" x 9'9" (2.937 x 2.979)  
Upvc window to front. Airing cupboard. Radiator.

**BEDROOM TWO:**

9'8" x 12'7" (2.947 x 3.824)  
Upvc window to front. Built in wardrobe. Radiator.

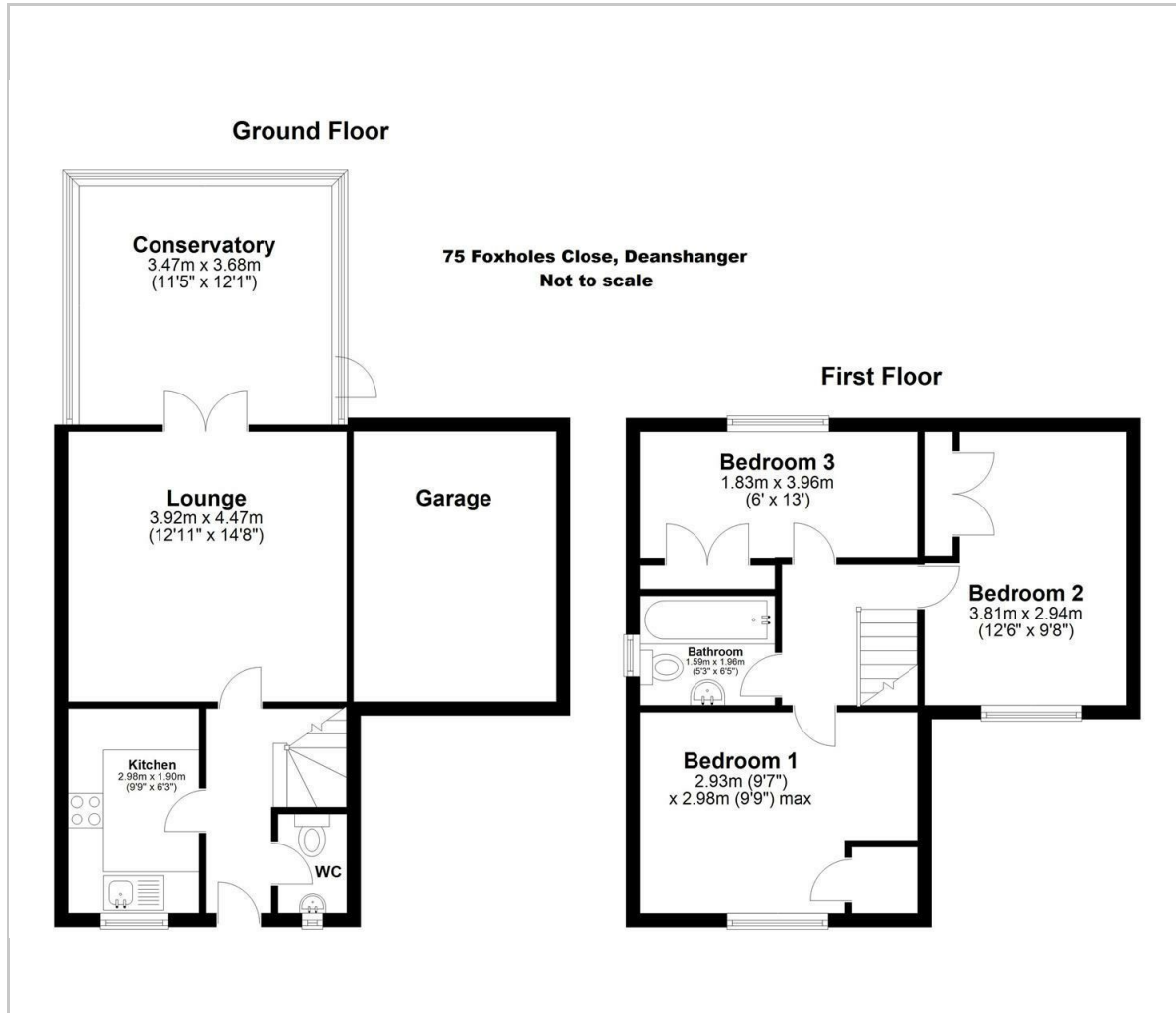
**BEDROOM THREE:**

13'0" x 6'1" (3.970 x 1.849)  
Upvc window to rear. Built in wardrobe. Radiator.

**BATHROOM:**

Upvc window with obscure glazing to side aspect. Three piece white suite, comprising of a paneled bath with shower attachment over, low level WC and Pedestal wash hand basin. Radiator.

## Floor Plan



## Viewing

Please contact our Towcester Lettings Office on 01327359164 if you wish to arrange a viewing appointment for this property or require further information.

These particulars, whilst believed to be accurate are set out as a general outline only for guidance and do not constitute any part of an offer or contract. Intending purchasers should not rely on them as statements of representation of fact, but must satisfy themselves by inspection or otherwise as to their accuracy. No person in this firm's employment has the authority to make or give any representation or warranty in respect of the property.

Town Hall, 86 Watling Street East, Towcester, Northamptonshire, NN12 6BS  
Tel: 01327359164 Email: towcesterlettings@bartramandco.co.uk <https://www.bartramandco.co.uk>

## Area Map



## Energy Efficiency Graph

