

Bartram & Co



Apartment 10, Roman Corner Northampton Road, Towcester, NN12

£925 PCM -



Council Tax Band: B

Service Charge: x

Ground Rent: x



Apartment 10, Roman Corner Northampton Road

Towcester, NN12 6LD

- A Modern Two Bedroom Apartment
- An Open Plan Lounge, Kitchen & Diner
- Double Glazed Windows & Electric Heating Throughout
- Council Tax Band: B
- In A Sought After Central Location
- Two Double Bedrooms & Built-in Wardrobes
- Unfurnished, Available 1st May 2024
- EPC Energy Rating: B

A modern open plan one bedroom apartment located in an un-rivalled central location, just a few yards from local amenities and open countryside walks. Finished to a high specification, the property boasts a fitted high gloss Grey kitchen with a comprehensive range of integrated appliances, engineered oak flooring and a bathroom with shower. This centrally heated property also has a security intercom system and double glazed sash windows throughout.

Please note that your net income must be at least £33,300 p/a in order to meet the affordability criteria.



LOCATION:

COMMUNAL HALLWAY:

HALLWAY:

OPEN PLAN LIVING AREA:

15'11" max x 23'3" (4.848 max x 7.079)

BATHROOM:

5'10" x 6'1" (1.768 x 1.847)

BEDROOM ONE:

13'6" max x 8'5" (4.111 max x 2.553)

BEDROOM TWO:

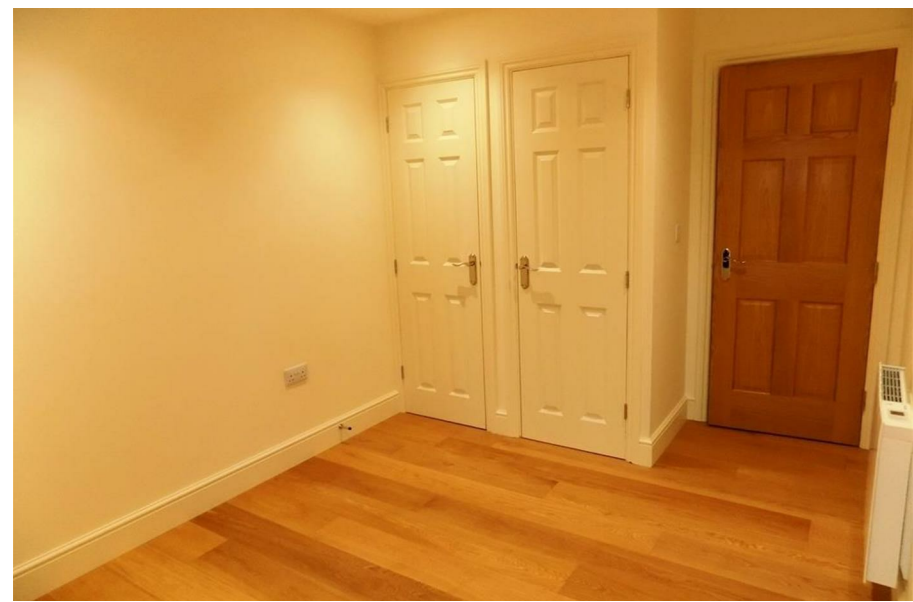
8'9" max x 13'6" max (2.662 max x 4.116 max)

COMMUNAL COURTYARD:



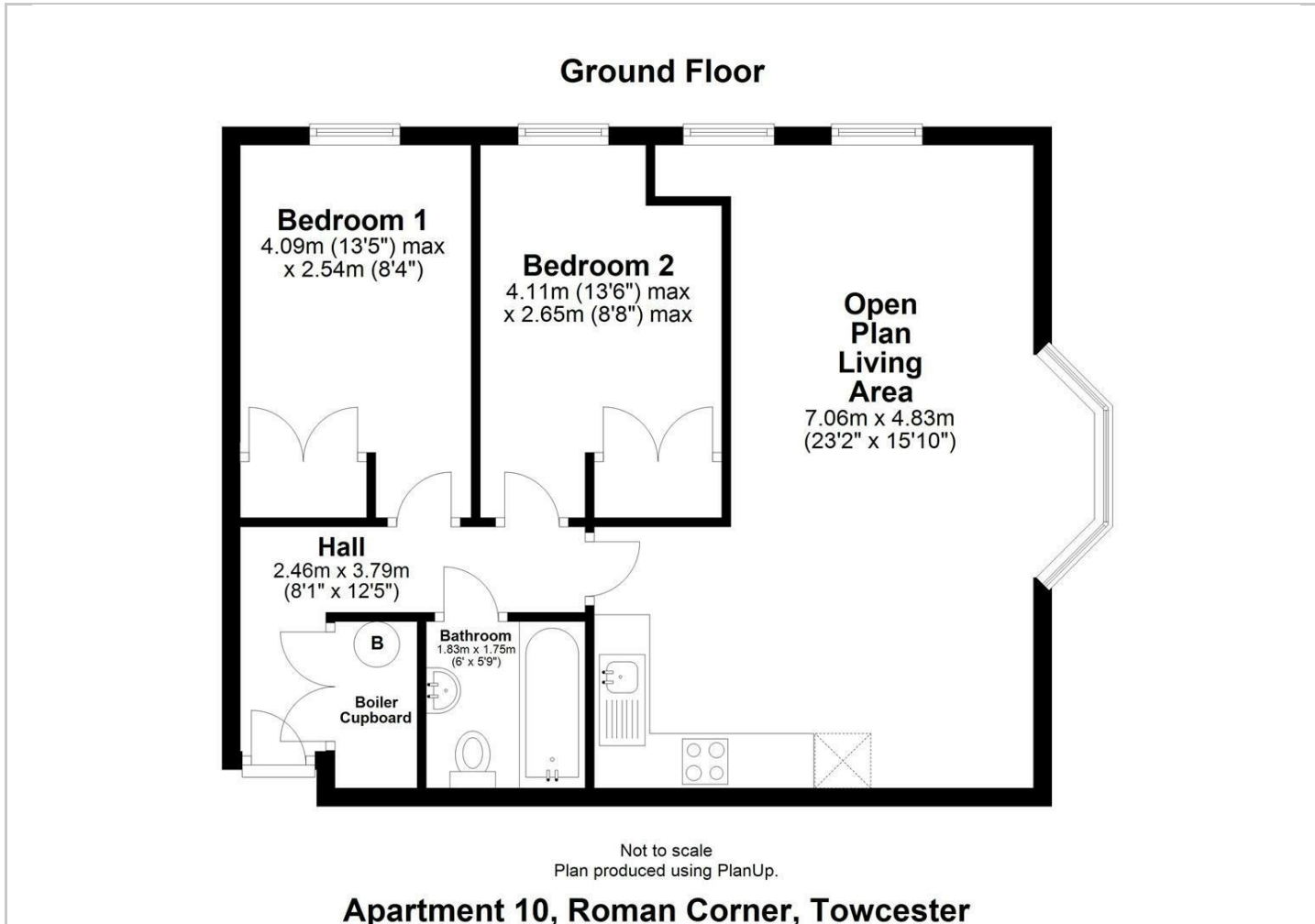


Directions





Floor Plans



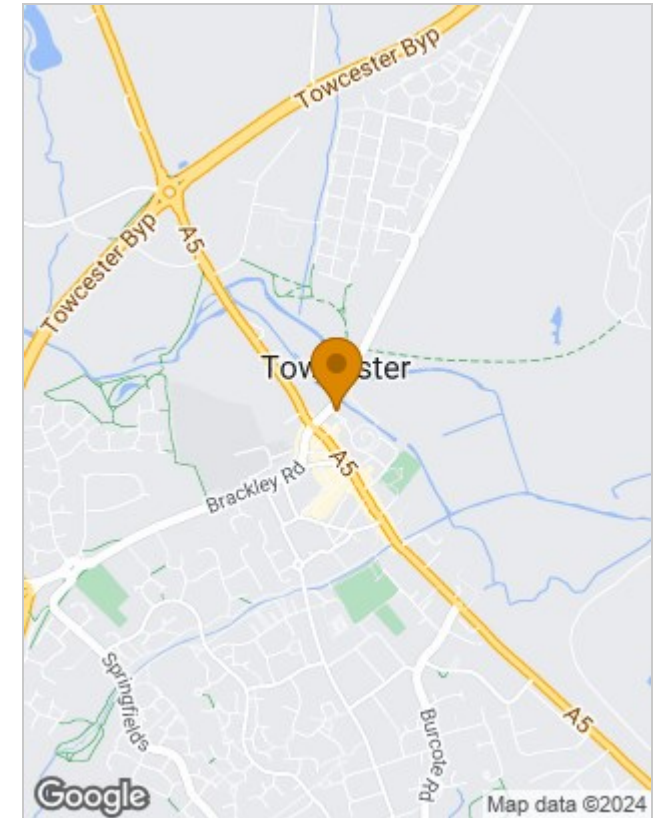
Viewing

Please contact our Towcester Lettings Office on 01327359164 if you wish to arrange a viewing appointment for this property or require further information.

The particulars are set out as a general outline only for the guidance of intended purchasers or lessees, and do not constitute, any part of a contract. Nothing in these particulars shall be deemed to be a statement that the property is in good structural condition or otherwise nor that any of the services, appliances, equipment or facilities are in good working order. Purchasers should satisfy themselves of this prior to purchasing.

Town Hall, 86 Watling Street East, Towcester, Northamptonshire, NN12 6BS
Tel: 01327359164 Email: towcesterlettings@bartramandco.co.uk <https://www.bartramandco.co.uk>

Location Map



Energy Performance Graph

Energy Efficiency Rating		Current	Potential
Very energy efficient - lower running costs			
(92 plus) A			
(81-91) B			
(69-80) C			
(55-68) D			
(39-54) E			
(21-38) F			
(1-20) G			
Not energy efficient - higher running costs			
England & Wales	EU Directive 2002/91/EC		