

Bartram & Co



12 Tanter's Road, Towcester, NN12 6LE
£1,600 PCM

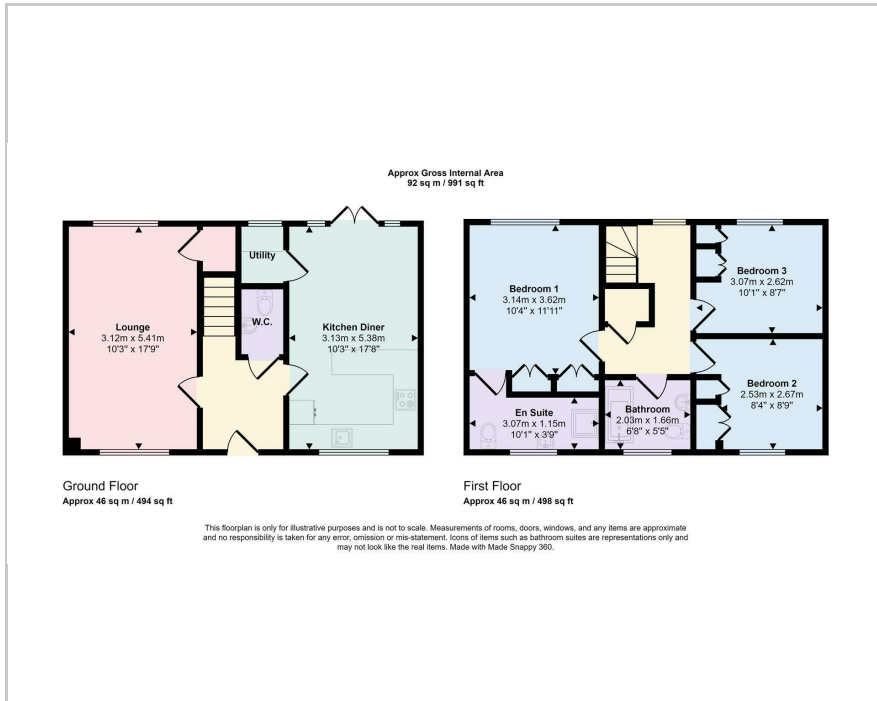


Council Tax Band: D

Bartram & Co

www.bartramandco.co.uk

Floor Plan

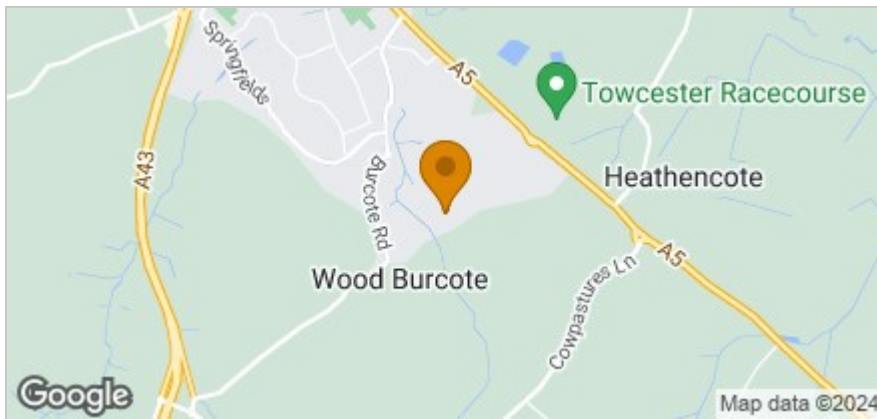


Accommodation

- A Modern Detached Home
- Fitted Kitchen/Dining Room
- Utility and Cloakrooms
- Ensuite Shower to Master
- Three Double Bedrooms
- In Sought After Location
- Detached Garage & Garden
- EPC Energy Rating; B
- Council Tax Band: D
- Holding Payment: £369.00



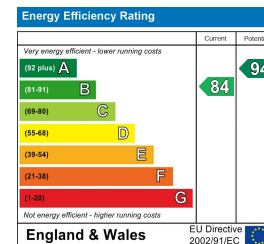
Area Map



Viewing

Please contact our Towcester Office on 01327 359164 if you wish to arrange a viewing appointment for this property or require further information.

Energy Efficiency Graph



These particulars, whilst believed to be accurate are set out as a general outline only for guidance and do not constitute any part of an offer or contract. Intending purchasers should not rely on them as statements of representation of fact, but must satisfy themselves by inspection or otherwise as to their accuracy. No person in this firm's employment has the authority to make or give any representation or warranty in respect of the property.

Town Hall, 86 Watling Street East, Towcester, Northamptonshire, NN12 6BS
 Tel: 01327 359164 Email: towcestersales@bartramandco.co.uk <https://www.bartramandco.co.uk>