



HUNTERS®

**Sewerby Heads, Bridlington**  
YO16 7DE

**Asking Price £365,000**



3



2



2



C

**Council Tax: C**

**HUNTERS®**  
EXCLUSIVE



# Sewerby Heads, Bridlington

## DESCRIPTION

Nestled in a sought-after area of Bridlington, this beautifully presented detached home offers generous living space, modern finishes, and excellent functionality—perfect for families or those who love to entertain.

Upon arrival, the property welcomes you with a private driveway, providing convenient off-road parking. Step inside to a bright and airy living room, featuring a charming bay window that fills the space with natural light. An inset gas fire with a sandstone surround adds a stylish focal point and a cosy touch to the space.

The heart of the home is the stunning open-plan kitchen and dining area. Boasting a contemporary design, the kitchen includes ample cupboard space for all your storage needs, complemented by a central island ideal for meal preparation or casual dining. The spacious dining area seamlessly flows from the kitchen and is perfectly suited for entertaining, hosting family meals, or creating an additional lounge or storage space. Floor-to-ceiling sliding doors open directly onto the well-maintained garden, blending indoor and outdoor living effortlessly.

A separate utility room and a convenient downstairs W/C complete the ground floor.

Upstairs, you'll find three generously sized bedrooms. The master bedroom benefits from a luxurious three-piece en-suite, complete with a bath/shower combination. The family bathroom is equally well-appointed, featuring a stylish three-piece suite with a walk-in shower.

Outside, the enclosed rear garden is a true highlight. Enjoy the sun from the raised patio seating area—perfect for relaxing or alfresco dining. Additional storage is available with a detached garage, which has vehicle access via a ten-foot off Marton Road—offering added convenience and practicality.

This property combines comfort, style, and practicality in one desirable package. Don't miss your opportunity to view this lovely home—schedule your viewing today!





ROOMS

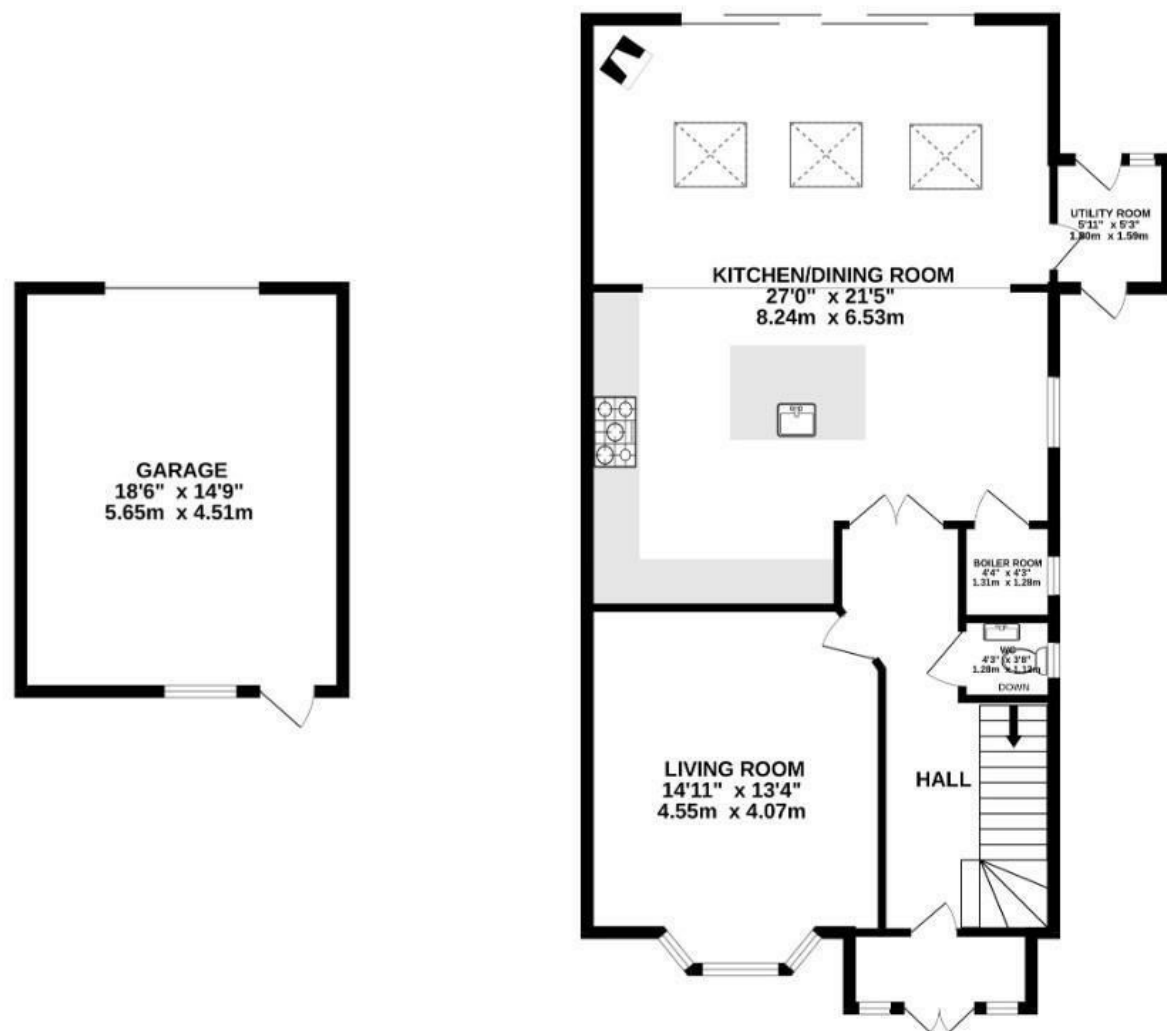




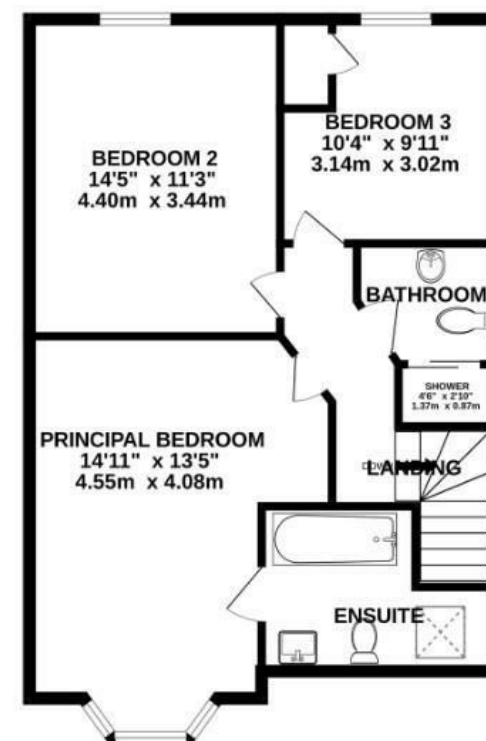




GROUND FLOOR  
1239 sq.ft. (115.1 sq.m.) approx.



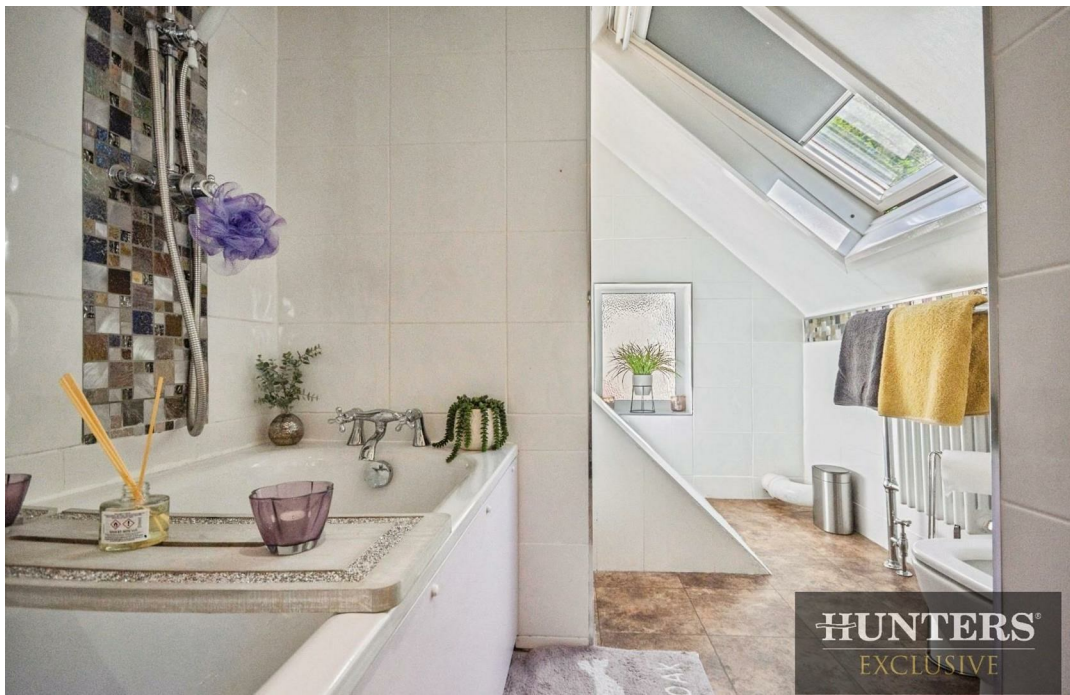
1ST FLOOR  
664 sq.ft. (61.7 sq.m.) approx.



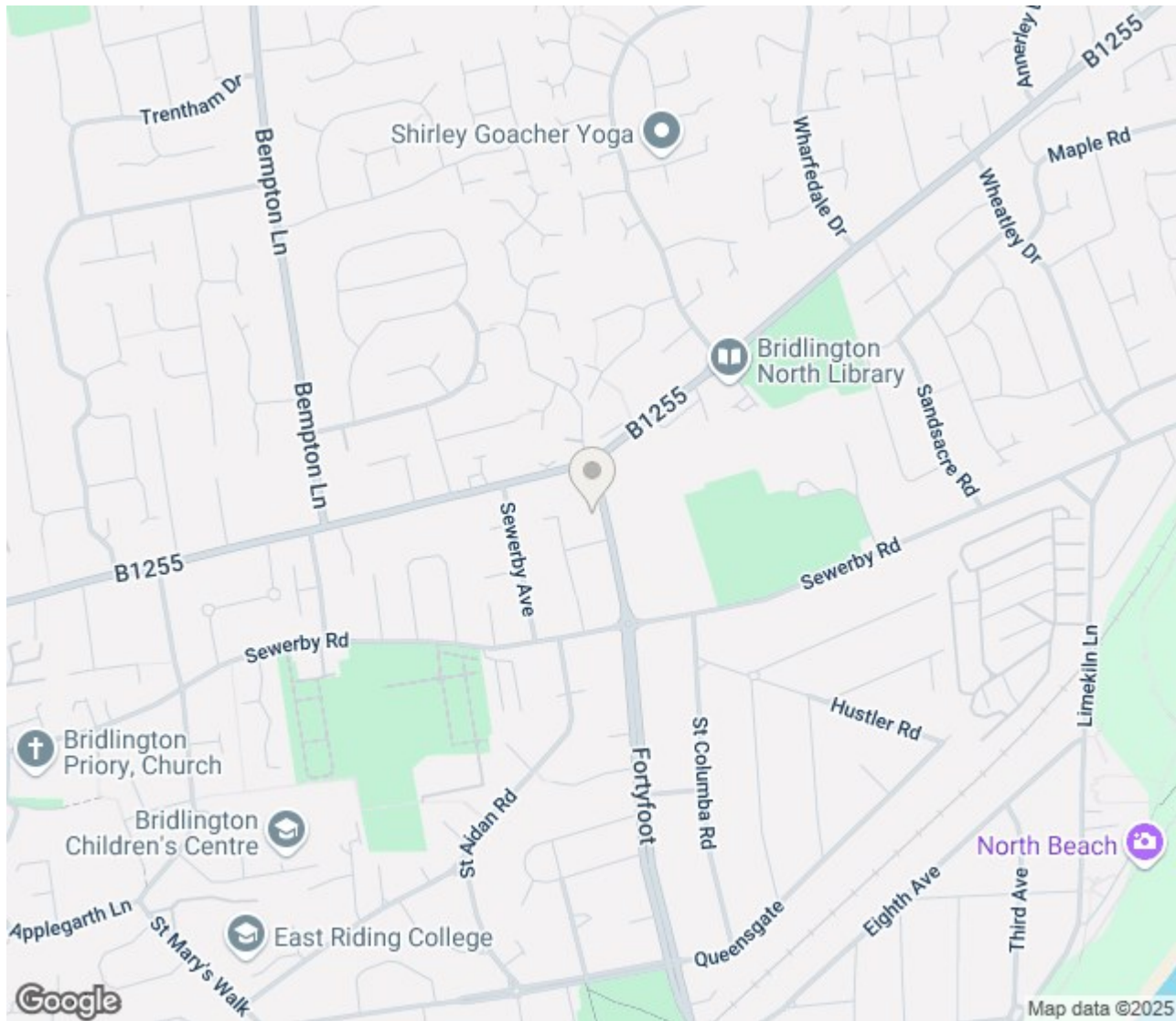
TOTAL FLOOR AREA : 1903 sq.ft. (176.8 sq.m.) approx.

Whilst every attempt has been made to ensure the accuracy of the floorplan contained here, measurements of doors, windows, rooms and any other items are approximate and no responsibility is taken for any error, omission or mis-statement. This plan is for illustrative purposes only and should be used as such by any prospective purchaser. The services, systems and appliances shown have not been tested and no guarantee as to their operability or efficiency can be given.  
Made with Metropix ©2025









# ENERGY PERFORMANCE CERTIFICATE

Energy Efficiency Rating		
	Current	Potential
Very energy efficient - lower running costs		
(92 plus) <b>A</b>		
(81-91) <b>B</b>		
(69-80) <b>C</b>	70	78
(55-68) <b>D</b>		
(39-54) <b>E</b>		
(21-38) <b>F</b>		
(1-20) <b>G</b>		
Not energy efficient - higher running costs		
<b>England &amp; Wales</b>	EU Directive 2002/91/EC	

## Thinking of Selling?

If you are thinking of selling your home or just curious to discover the value of your property, Hunters would be pleased to provide free, no obligation sales and marketing advice. Even if your home is outside the area covered by our local offices we can arrange a Market Appraisal through our national network of Hunters estate agents.

27 Quay Road, Bridlington, YO15 2AR | 01262 674252 | [bridlington@hunters.com](mailto:bridlington@hunters.com)





