

HUNTERS®

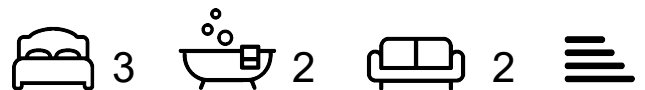
HERE TO GET *you* THERE



Marine Valley

Flamborough, Bridlington, YO15 1BH

Asking Price £190,000



Council Tax: A



33 Marine Valley

Flamborough, Bridlington, YO15 1BH

Asking Price £190,000



Nestled in the picturesque village of Flamborough, just moments from the iconic Flamborough Head, this beautifully presented three-bedroom bungalow offers the perfect blend of comfort, space, and countryside charm. Set back from the road with a generous driveway providing parking for multiple vehicles, this home is ideal for families or those looking for single-level living with ample room to entertain.

Step inside to a bright and airy open-plan modern kitchen and dining area, complete with a cosy log burner – perfect for relaxing evenings or hosting guests. The kitchen is modern and well-equipped, featuring an integrated oven, hob, and fridge, extensive counter space, and a separate utility area for your washing and drying needs.

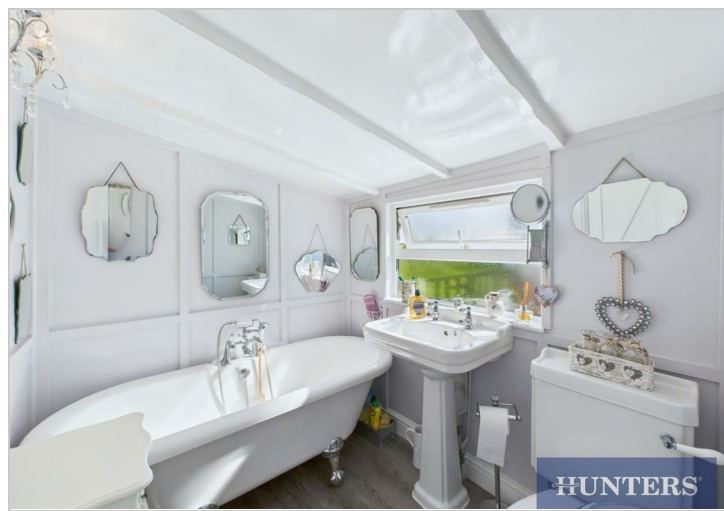
An additional reception room offers flexible living – whether you need a home office, formal dining room, or extra lounge space, this room adapts to your lifestyle and also boasts a second charming log burner.

The property includes three spacious bedrooms, all offering plenty of natural light and room for storage. There are two well-appointed bathrooms: one with a walk-in shower and the other with a freestanding roll top bath, catering to both quick mornings and leisurely soaks.

Outside, the private rear garden provides a peaceful retreat with uninterrupted field views. With space for outdoor furniture, it's the perfect spot to enjoy sunny afternoons or dine al fresco in the warmer months. A brick outbuilding with electric supply offers excellent additional storage or workshop potential.

This home also comes fully furnished, allowing you to move straight in and start enjoying everything it has to offer.

Don't miss the chance to view this versatile and characterful bungalow in one of East Yorkshire's most desirable coastal villages – just a stone's throw from the dramatic cliffs and coastal paths of Flamborough Head.



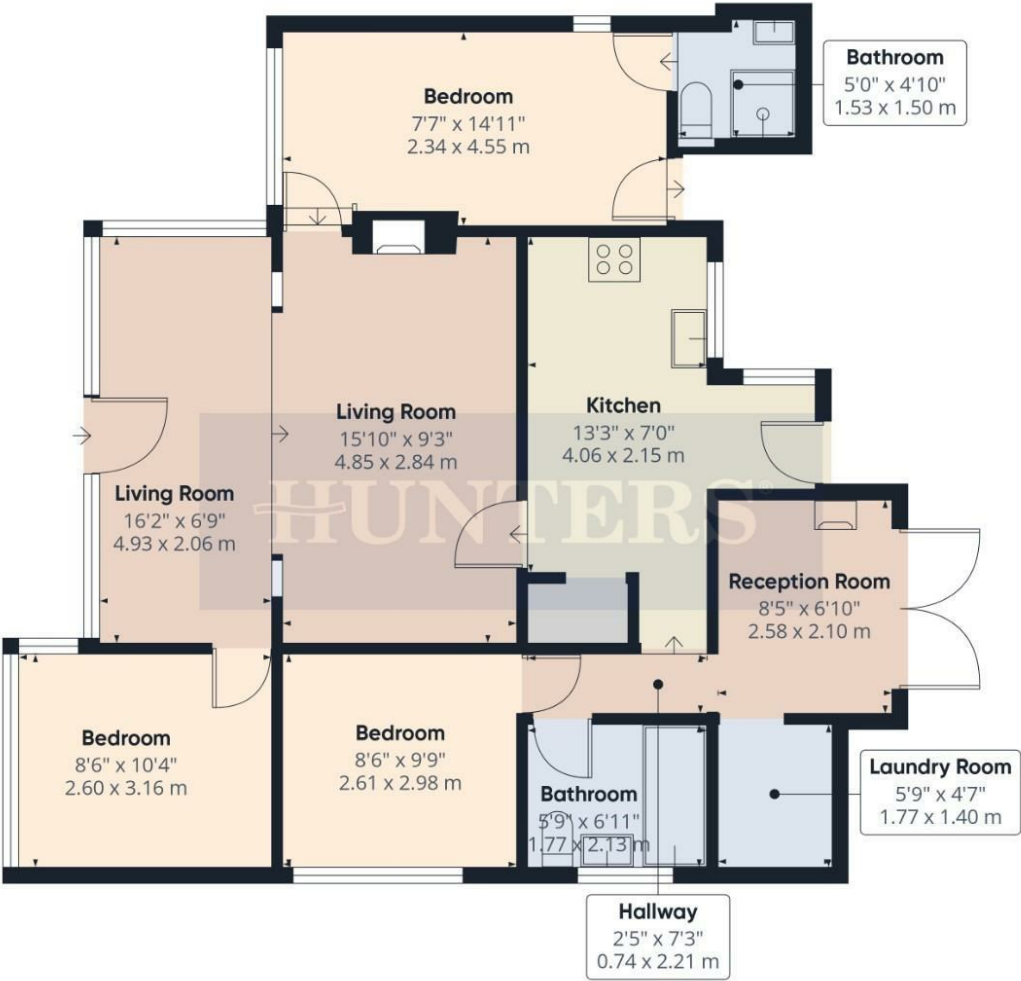
Hybrid Map



Terrain Map



Road Map



Approximate total area⁽¹⁾
851 ft²
79 m²

(1) Excluding balconies and terraces.

While every attempt has been made to ensure accuracy, all measurements are approximate, not to scale. This floor plan is for illustrative purposes only.

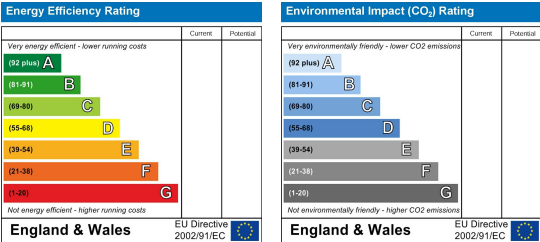
Calculations were based on RICS IPMS 3C standard. Please note that calculations were adjusted by a third party and therefore may not comply with RICS IPMS 3C.

GIRAFFE360

Viewing

Please contact our Hunters Bridlington Office on 01262 674252 if you wish to arrange a viewing appointment for this property or require further information.

Energy Efficiency Graph



These particulars are intended to give a fair and reliable description of the property but no responsibility for any inaccuracy or error can be accepted and do not constitute an offer or contract. We have not tested any services or appliances (including central heating if fitted) referred to in these particulars and the purchasers are advised to satisfy themselves as to the working order and condition. If a property is unoccupied at any time there may be reconnection charges for any switched off/disconnected or drained services or appliances - All measurements are approximate. **THINKING OF SELLING?** If you are thinking of selling your home or just curious to discover the value of your property, Hunters would be pleased to provide free, no obligation sales and marketing advice. Even if your home is outside the area covered by our local offices we can arrange a Market Appraisal through our national network of Hunters estate agents.