

HUNTERS[®]

HERE TO GET *you* THERE



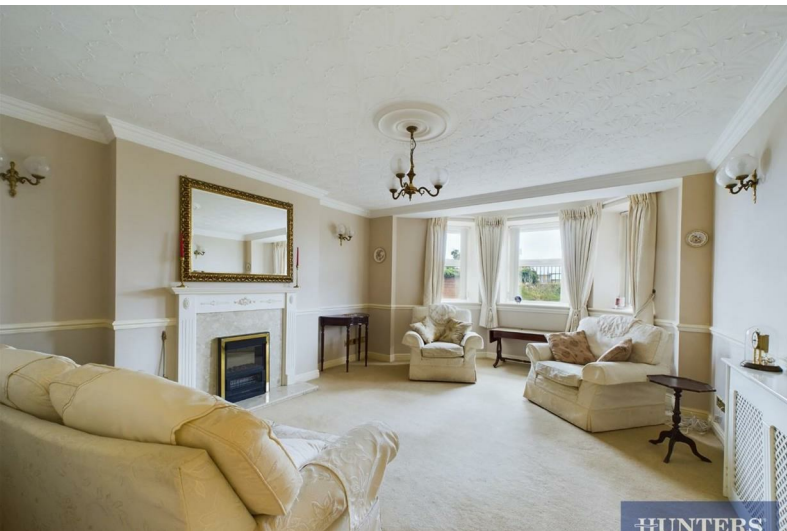
South Marine Drive

Bridlington, YO15 3JJ

Offers Over £195,000



Council Tax: C



11 Shirley Court South Marine Drive

Bridlington, YO15 3JJ

Offers Over £195,000



Offered to the market with no onward chain is this two bedroom, ground floor apartment, located in a desirable location on the South Side of Bridlington.

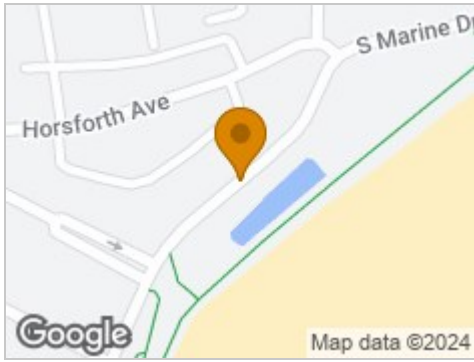
This apartment is the perfect coastal retreat or retirement property in a central location with the beach right on its door step and a range of local amenities nearby such as supermarkets, transport links, cafes and The Bridlington Spa.

The property briefly comprises entrance hall, lounge, dining room/third bedroom, kitchen, master bedroom with an en-suite, a second double bedroom, main bathroom, a communal yard and an allocated parking parking space for one vehicle.

Early viewings are advised to appreciate all this property has to offer!



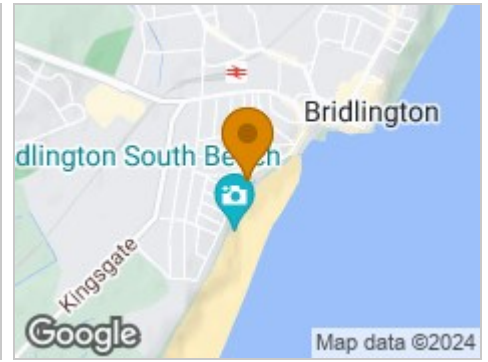
Road Map



Hybrid Map



Terrain Map



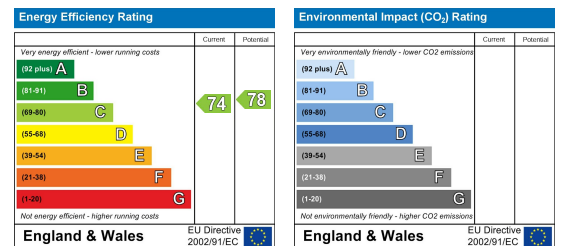
Floor Plan



Viewing

Please contact our Hunters Bridlington Office on 01262 674252 if you wish to arrange a viewing appointment for this property or require further information.

Energy Efficiency Graph



These particulars are intended to give a fair and reliable description of the property but no responsibility for any inaccuracy or error can be accepted and do not constitute an offer or contract. We have not tested any services or appliances (including central heating if fitted) referred to in these particulars and the purchasers are advised to satisfy themselves as to the working order and condition. If a property is unoccupied at any time there may be reconnection charges for any switched off/disconnected or drained services or appliances - All measurements are approximate. **THINKING OF SELLING?** If you are thinking of selling your home or just curious to discover the value of your property, Hunters would be pleased to provide free, no obligation sales and marketing advice. Even if your home is outside the area covered by our local offices we can arrange a Market Appraisal through our national network of Hunters estate agents.