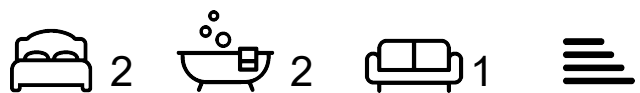




Meadowfield Road

Bridlington, YO15 3LD

Offers Over £180,000



This well-presented, two-bedroom ground floor apartment is located just a stones throw away from South Beach, offering sea views for a perfect coastal retreat. This property is offered to the market with no onward chain and is an ideal choice for couples or those looking for a comfortable retirement home.

The apartment briefly comprises entrance hall, lounge, kitchen, two double bedrooms, an en-suite bathroom, main bathroom and off street parking for one vehicle to the front of the building.

Situated in a desirable location, this flat offers easy access to South Beach, the Bridlington Spa and a range of local amenities nearby. Don't miss out on this fantastic opportunity to own an apartment in a prime coastal location.

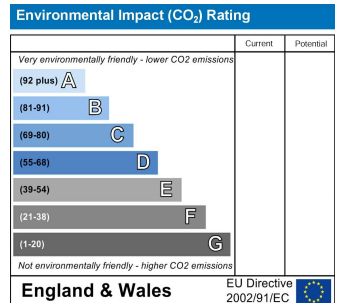
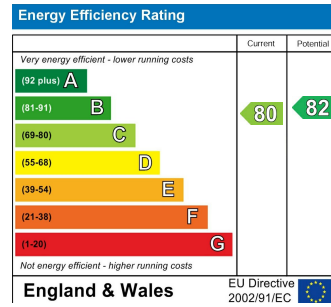
Contact us today to arrange a viewing.



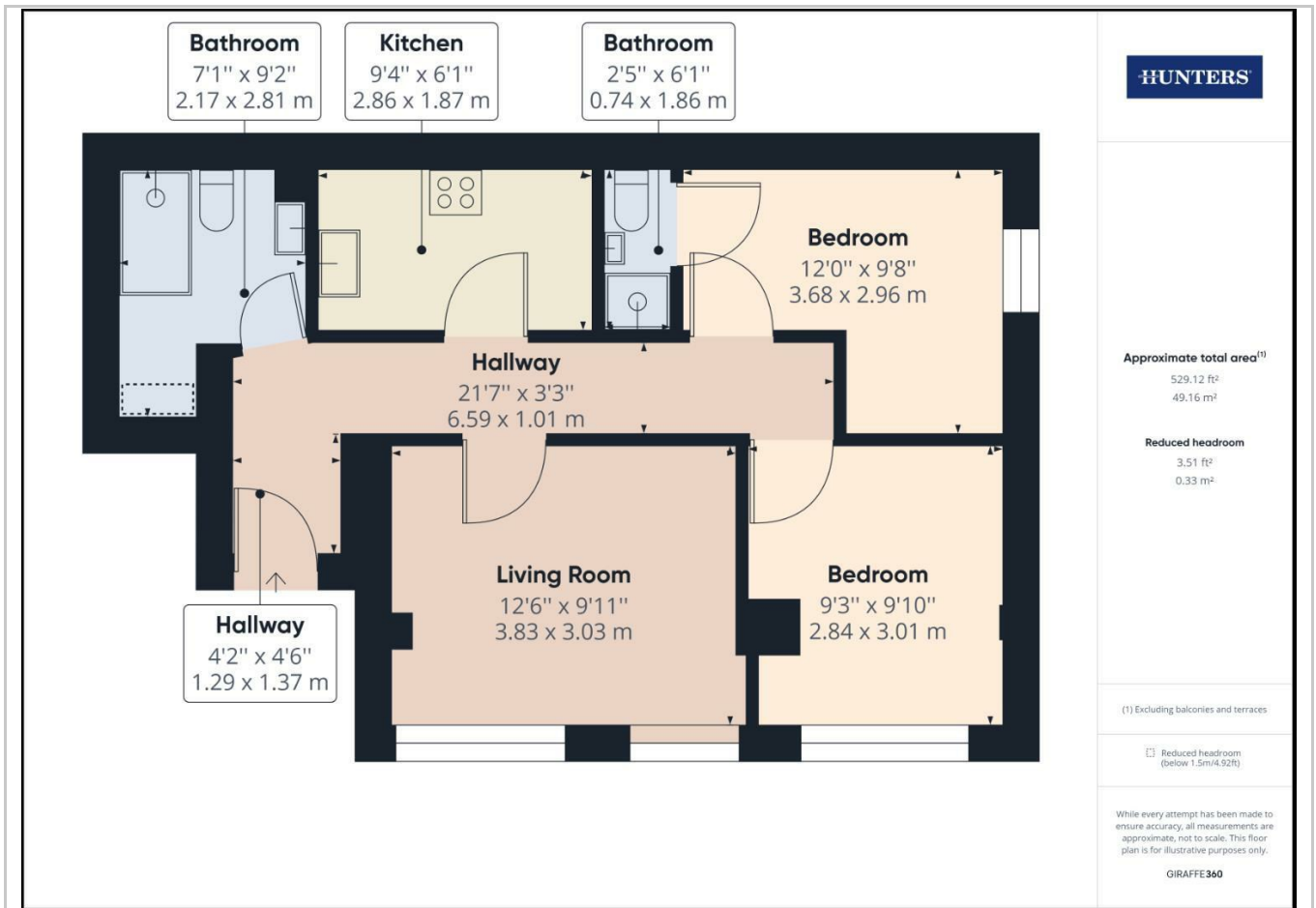
Area Map



Energy Efficiency Graph



Floor Plans



These particulars are intended to give a fair and reliable description of the property but no responsibility for any inaccuracy or error can be accepted and do not constitute an offer or contract. We have not tested any services or appliances (including central heating if fitted) referred to in these particulars and the purchasers are advised to satisfy themselves as to the working order and condition. If a property is unoccupied at any time there may be reconnection charges for any switched off/disconnected or drained services or appliances - All measurements are approximate. **THINKING OF SELLING?** If you are thinking of selling your home or just curious to discover the value of your property, Hunters would be pleased to provide free, no obligation sales and marketing advice. Even if your home is outside the area covered by our local offices we can arrange a Market Appraisal through our national network of Hunters estate agents.

27 Quay Road, Bridlington, YO15 2AR
Tel: 01262 674252 Email: bridlington@hunters.com <https://www.hunters.com>