

Melton Close

Ruislip • Middlesex • HA4 9TF

PCM: £2,300 PCM



coopers
est 1986



Coopers are delighted to offer to the market this FANTASTIC family home, situated conveniently between Eastcote High Street and Ruislip Manor (Metropolitan and Piccadilly line).

This modern property boasts 2 double bedrooms and a generous third bedroom. Ideally located in a QUIET cul de sac, this BEAUTIFUL property is walking distance to a variety of shops and restaurants. This property also comprises of; LARGE OPEN PLAN LIVING/DINING SPACE with separate Kitchen and sun-lit conservatory allowing floods of natural light. There is also a spacious rear garden, perfect for family living.

Semi-detached house

Three bedrooms

Modern fitted kitchen

Part furnished

Seperate study/utility room

Conservatory

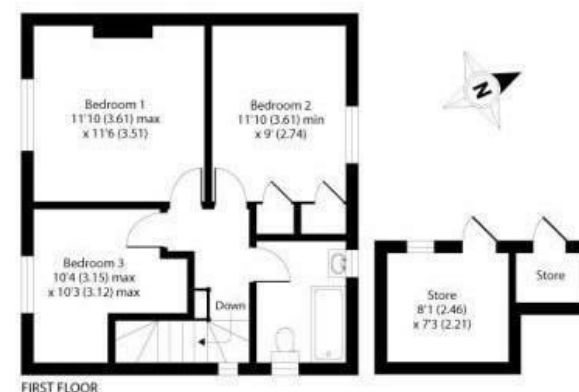
Open plan family/dining room

Large rear garden

Close to local schools and tube links



APPROX. GROSS INTERNAL FLOOR AREA 1072 SQ FT 99.5 SQ METRES (EXCLUDES STORES)



Available Date

2nd March 2026

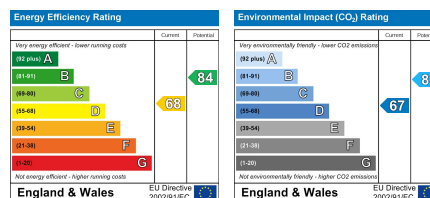
coopers
est 1986

01895 625 625

**126-128 High Street, Ruislip,
Middlesex, HA4 8LL**

rl@coopersresidential.co.uk

CoopersResidential.co.uk



Important Notice: These particulars, whilst believed to be accurate are set out as a general outline only for guidance and do not constitute any part of an offer or contract. Intending purchasers should not rely on them as statements or representation of fact, but must satisfy themselves by inspection or otherwise has the authority to make or give any representation or warranty in respect of the property.