

Beaumanor House

Ruislip • Middlesex • HA4 8GD

PCM: £1,825 PCM



coopers
est 1986

A SUPERBLY presented two bedroom apartment set in this HIGHLY SOUGHT AFTER development. Situated near Eastcote High Street with its array of shops and transport links, this STUNNING property briefly comprises: SPACIOUS living room leading to MODERN fitted kitchen, two double bedrooms (both with fitted wardrobes) with the master BOASTING an en suite bathroom and CONTEMPORARY family bathroom. This immaculate property also enjoys a PRIVATE BALCONY, secure video entry phone system and allocated parking.

2 Double Bedrooms

Ensuite Bathroom

Private Balcony

Modern Kitchen

Allocated Parking

Pembroke Park Development

Unfurnished

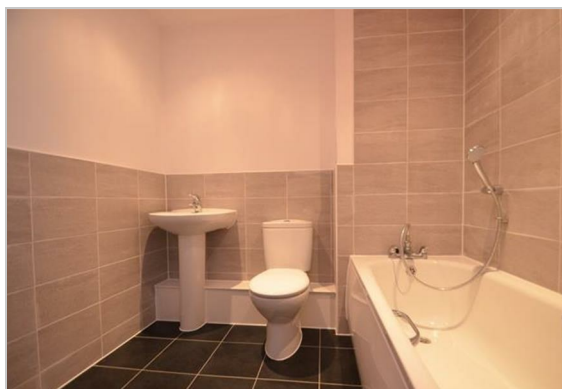
Slick and stylish finish

First floor

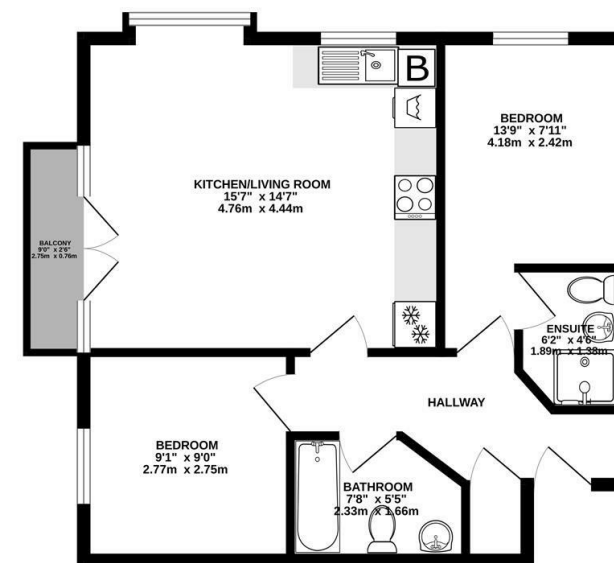
Sought after location

Available Date

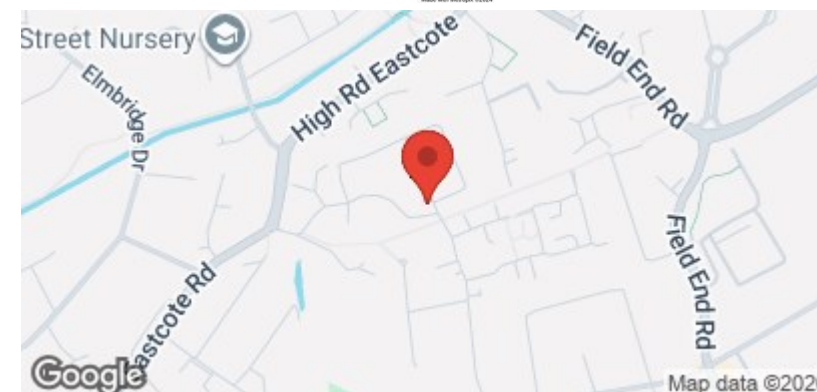
4th April 2026



GROUND FLOOR
528 sq.ft. (49.0 sq.m.) approx.



TOTAL FLOOR AREA: 528 sq.ft. (49.0 sq.m.) approx.
Whilst every attempt has been made to ensure the accuracy of the floorplan contained here, measurements of doors, windows, rooms and any other items are approximate and no responsibility is taken for any misrepresentation or misstatement. This plan is for illustrative purposes only and should be used as such by any prospective purchaser. The services, systems and appliances shown have not been tested and no guarantee as to their operability or efficiency can be given.
Made with Mapbox C2024

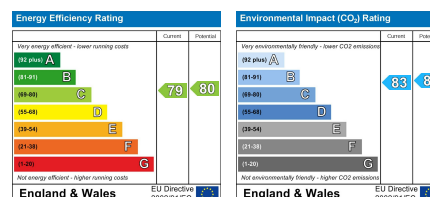


coopers
est 1986

01895 625 625

126-128 High Street, Ruislip,
Middlesex, HA4 8LL
rl@coopersresidential.co.uk

CoopersResidential.co.uk



Important Notice: These particulars, whilst believed to be accurate are set out as a general outline only for guidance and do not constitute any part of an offer or contract. Intending purchasers should not rely on them as statements or representation of fact, but must satisfy themselves by inspection or otherwise has the authority to make or give any representation or warranty in respect of the property.