

Almond Avenue

Ickenham • Middlesex • UB10 8NA

PCM: £3,000 PCM



coopers
est 1986

This detached four-bedroom home features a spacious interior and a prime location just minutes from Ickenham High Street offering both comfort and convenience. The property boasts three reception rooms, a dining room, a well-appointed kitchen, a utility room, four generously sized double bedrooms, and a family bathroom.

Detached

Four bedrooms

Garage

Off street parking

Spacious interior throughout

Three reception rooms

Newly decorated

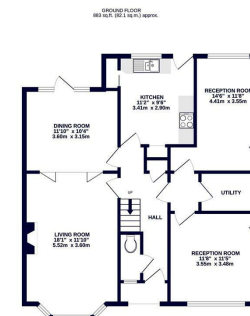
Close to sough after schools

Minutes from Ickenham high street

Easy access to A40/M40/M25

Available Date

11th October 2025



coopers
est 1986

TOTAL FLOOR AREA: 1813 sq ft (168.4 sq.m.) approx.
Whilst every attempt has been made to ensure the accuracy of the description contained herein, measurements of doors, windows, rooms and any other items are approximate and no responsibility is taken for any error, omission or misstatement. This plan is for illustrative purposes only and should be used as a guide for any prospective purchaser. The services, systems and appliances shown have not been tested and no guarantee can be given for their operability or efficiency on the open market.
Made with floorplan123

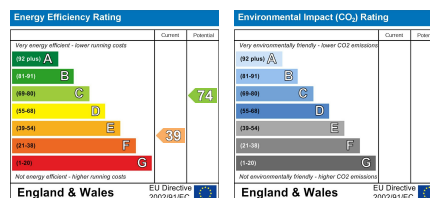


coopers
est 1986

01895 625 625

126-128 High Street, Ruislip,
Middlesex, HA4 8LL
rl@coopersresidential.co.uk

CoopersResidential.co.uk



Important Notice: These particulars, whilst believed to be accurate are set out as a general outline only for guidance and do not constitute any part of an offer or contract. Intending purchasers should not rely on them as statements or representation of fact, but must satisfy themselves by inspection or otherwise has the authority to make or give any representation or warranty in respect of the property.