

Harwell Close

Ruislip • Middlesex • HA4 7EA

PCM: £3,700 PCM



coopers
est 1986



We are delighted to present to the market this STUNNING property which has been recently REFURBISHED throughout to the highest specification. This home is located footsteps from both Ickenham Village and Ruislip High Street both of which offer a SUPERB range of fashionable shops, cafés and restaurants whilst the pleasant open fields space is just a brief stroll away. West Ruislip station is a SHORT WALK serviced by both tube (Central line) and train lines into Marylebone Station in just 25 minutes, with regular trains every 15 minutes. Alternatively, Ickenham Station (Metropolitan/Piccadilly lines) is also within walking distance, providing reliable links into the City and West End. For the motorist the A40 is a short drive away providing access to Central London and the Home Counties. For families, there are a number of highly regarded schools including Douay Martyrs, Breakspear Infant and Juniors and Vyners Senior School, along with a number of leisure facilities including Ickenham Cricket Club, Uxbridge Golf Club, Ruislip bowls club and Health Club close by.

Detached

Stunning design and finish throughout

Beautiful kitchen open planned living area

Ample parking

Moments from West Ruislip Station

Quiet cul-de-sac

Ensuite

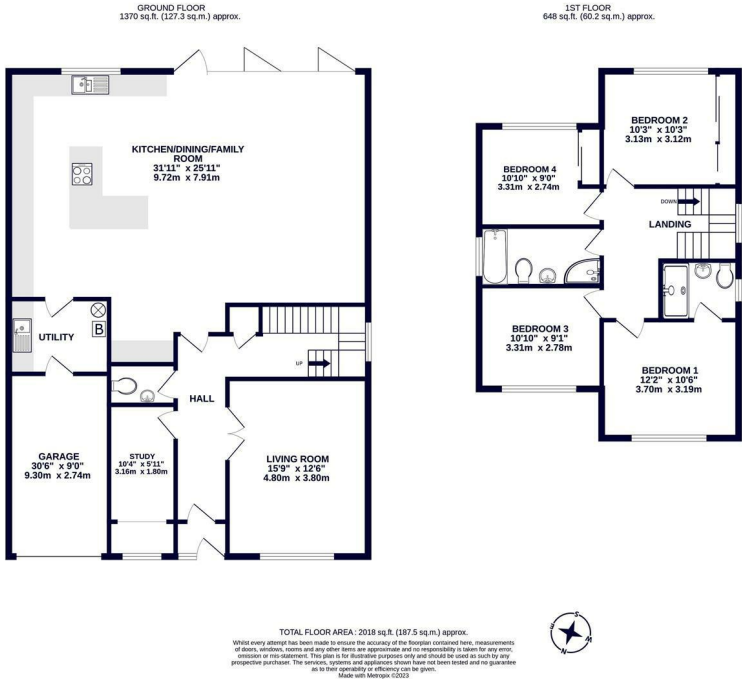
Modern family bathroom

Lovely private garden

Unfurnished

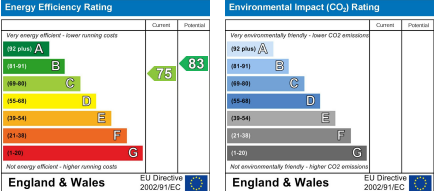
Available Date

6th September 2025



coopers
est 1986

01895 625 625
126-128 High Street, Ruislip,
Middlesex, HA4 8LL
rl@coopersresidential.co.uk
CoopersResidential.co.uk



Important Notice: These particulars, whilst believed to be accurate are set out as a general outline only for guidance and do not constitute any part of an offer or contract. Intending purchasers should not rely on them as statements or representation of fact, but must satisfy themselves by inspection or otherwise has the authority to make or give any representation or warranty in respect of the property.