

# Flowerdown Court

Ruislip • Middlesex • HA4 8GF  
PCM: £1,850 PCM



coopers  
est 1986

We are pleased to offer the market this STUNNING two double bedroom apartment in the highly SOUGHT AFTER Pembroke Park development. This SUPERB property consists of a SPACIOUS open plan lounge leading to MODERN kitchen, two good sized double bedrooms (en suite to master) and contemporary family bathroom. Other benefits include gas central heating, double glazing, balcony, allocated parking and secure entry phone system.

Two double bedrooms

Modern decor

Walking distance to Eastcote Tube Station

Underground parking

Open plan lounge

Balcony

Unfurnished

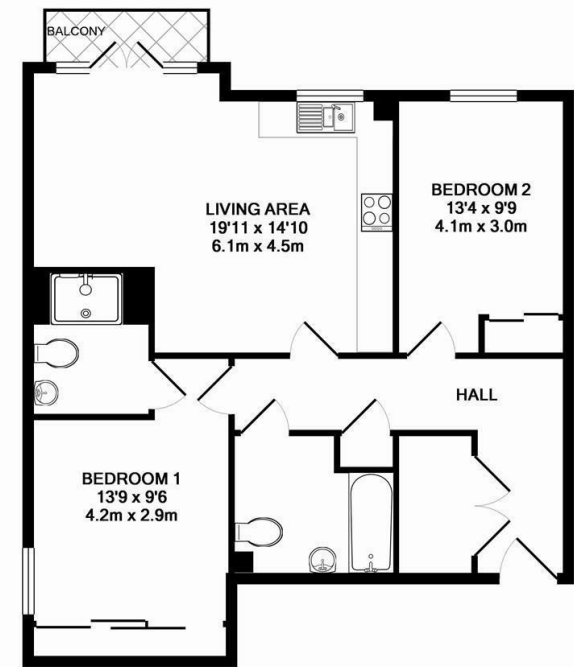
Sought after development

Excellent size

Available mid August

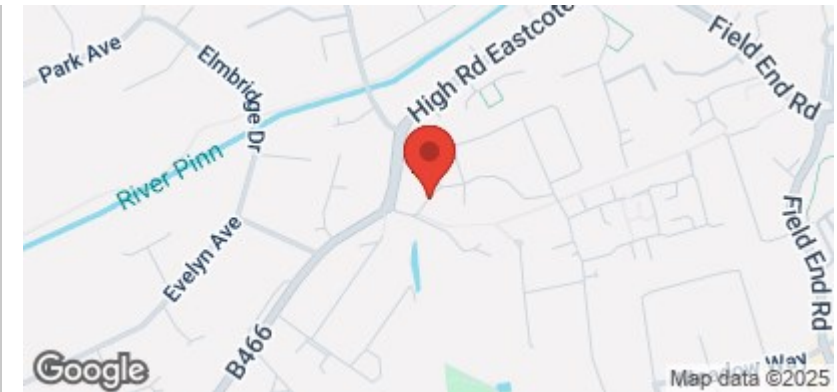
### Available Date

14th August 2025



TOTAL APPROX. FLOOR AREA 739 SQ.FT. (68.6 SQ.M.)

Whilst every attempt has been made to ensure the accuracy of the floor plan contained here, measurements of doors, windows, rooms and any other items are approximate and no responsibility is taken for any error, omission, or mis-statement. This plan is for illustrative purposes only and should be used as such by any prospective purchaser. The services, systems and appliances shown have not been tested and no guarantee as to their operability or efficiency can be given  
Made with Metropix ©2016



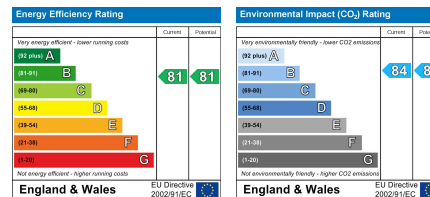
**coopers**  
est 1986

**01895 625 625**

**126-128 High Street, Ruislip,  
Middlesex, HA4 8LL**

**rl@coopersresidential.co.uk**

**CoopersResidential.co.uk**



Important Notice: These particulars, whilst believed to be accurate are set out as a general outline only for guidance and do not constitute any part of an offer or contract. Intending purchasers should not rely on them as statements or representation of fact, but must satisfy themselves by inspection or otherwise has the authority to make or give any representation or warranty in respect of the property.