

Greystoke Drive

Ruislip • • HA4 7YL
PCM: £1,800 PCM



coopers
est 1986

Nestled in the sought-after and tranquil residential area of Greystoke Drive, Ruislip, this beautifully presented two-bedroom terraced house offers a perfect blend of comfort, functionality, and convenience.

Spanning approximately 624 sq ft (58 sq m), this well-designed home features a bright and airy lounge (11'5" x 15'8") with ample space for both relaxing and entertaining. To the rear, the spacious kitchen diner (11'7" x 10'11") provides a modern and practical setting for family meals, complete with garden access for seamless indoor-outdoor living.

Upstairs, the main bedroom (11'7" x 9'4") is generously sized and flooded with natural light, while the second bedroom (11'5" x 7'8") offers flexibility as a guest room, nursery, or home office. The contemporary bathroom (5'3" x 6'5") is smartly appointed, featuring all essential amenities.

Newly Refurbished Two Bedroom Terraced House

Parking Available

Private Rear Garden

Quiet Residential Location

Close To Local Schools

Open Plan Living

624 sqft

Council Tax Band D

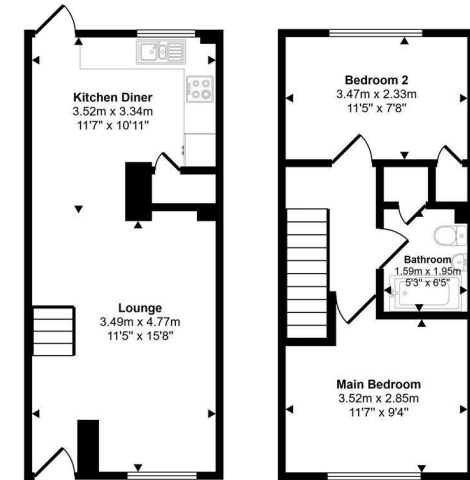
EPC - D

Available Date

10th June 2025



Approx Gross Internal Area
58 sq m / 624 sq ft



Ground Floor
Approx 29 sq m / 312 sq ft

First Floor
Approx 29 sq m / 311 sq ft

This floorplan is only for illustrative purposes and is not to scale. Measurements of rooms, doors, windows, and any items are approximate and no responsibility is taken for any error, omission or mis-statement. Icons of items such as bathroom suites are representations only and may not look like the real items. Made with Made Snappy 360.



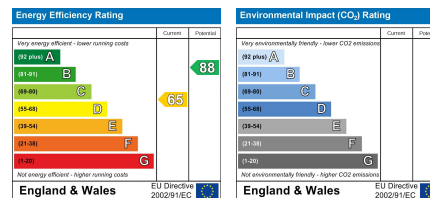
coopers
est 1986

01895 625 625

**126-128 High Street, Ruislip,
Middlesex, HA4 8LL**

rl@coopersresidential.co.uk

CoopersResidential.co.uk



Important Notice: These particulars, whilst believed to be accurate are set out as a general outline only for guidance and do not constitute any part of an offer or contract. Intending purchasers should not rely on them as statements or representation of fact, but must satisfy themselves by inspection or otherwise has the authority to make or give any representation or warranty in respect of the property.