

Cunningham Drive

Uxbridge • Middlesex • UB10 8FL
PCM: £3,200 PCM



coopers
est 1986

An Impressive Four-Bedroom Semi-Detached Home in a Prime Ickenham Location.

Nestled in a highly sought-after residential area of Ickenham, this superb four-bedroom semi-detached property offers spacious and versatile accommodation ideal for modern family living.

Upon entering, you are greeted by a welcoming entrance hallway that leads to a bright and spacious through-lounge and dining area—perfect for entertaining or relaxing with family. The modern fitted kitchen is well-equipped and benefits from ample storage and workspace, with access to a delightful rear garden that offers a peaceful retreat and space for outdoor dining.

Upstairs, the property boasts four well-proportioned bedrooms, including a



Five Bedroom Semi Detached House

Garage

Driveway Parking

Three Bathrooms

Quiet Residential Location

Close To Ickenham & West Ruislip Tube Stations

Metropolitan, Piccadilly & Central Lines

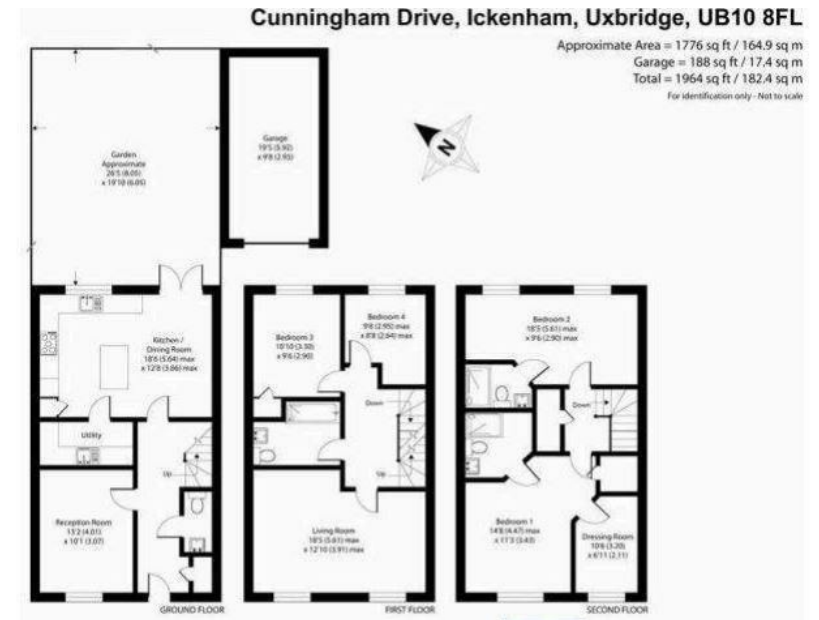
Immaculate Condition

EPC - B

Council Tax Band G

Available Date

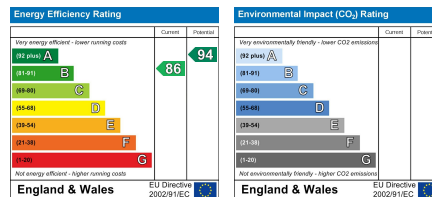
22nd April 2025



01895 625 625

126-128 High Street, Ruislip,
 Middlesex, HA4 8LL
 rl@coopersresidential.co.uk

CoopersResidential.co.uk



Important Notice: These particulars, whilst believed to be accurate are set out as a general outline only for guidance and do not constitute any part of an offer or contract. Intending purchasers should not rely on them as statements or representation of fact, but must satisfy themselves by inspection or otherwise has the authority to make or give any representation or warranty in respect of the property.

