

Whitby Road

Ruislip • Middlesex • HA4 9DR

PCM: £1,900 PCM



coopers
est 1986



Located on the ever-popular Whitby Road, this well-presented two-bedroom terraced house offers the perfect blend of comfort, convenience, and connectivity.

The property boasts a spacious reception room, a modern fitted kitchen, and two generously sized bedrooms, ideal for professionals, couples, or a small family. A private rear garden provides a lovely outdoor space, perfect for relaxing or entertaining during the warmer months.

Conveniently positioned, the home offers easy access to both Ruislip Manor and Eastcote High Streets, each providing a fantastic array of shops, restaurants, cafés, and amenities. Commuters will appreciate the close proximity to Ruislip Manor and Eastcote tube stations, both served by the Metropolitan and Piccadilly Lines, ensuring fast and frequent connections into Central London.

Two Bedroom Terraced House

Popular Location

Close To Ruislip Manor High Street

Close To Eastcote High Street

Metropolitan/Piccadilly Lines

Well Maintained Private Garden

Driveway Parking

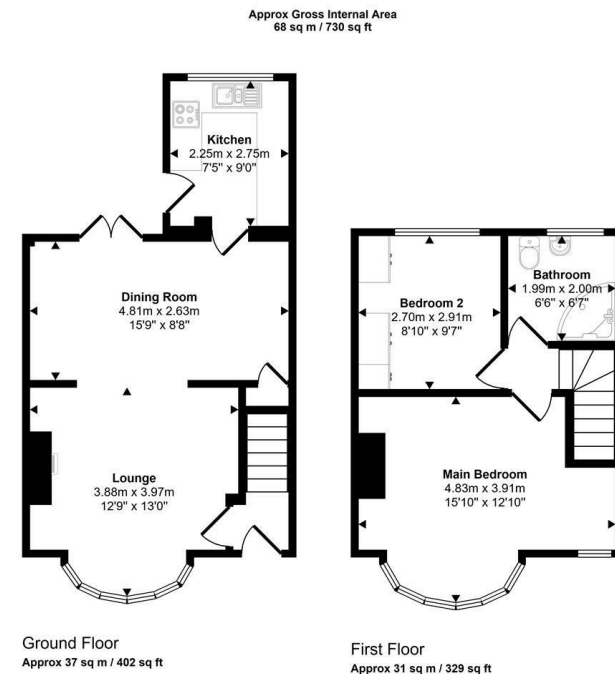
Furnished

730 sqft

Council Tax Band D

Available Date

1st May 2025



This floorplan is only for illustrative purposes and is not to scale. Measurements of rooms, doors, windows, and any items are approximate and no responsibility is taken for any error, omission or mis-statement. Icons of items such as bathroom suites are representations only and may not look like the real items. Made with Made Snappy 360.



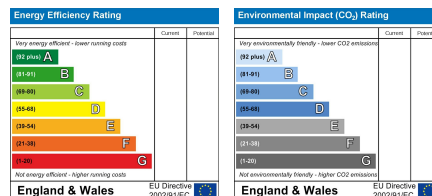
coopers
est 1986

01895 625 625

126-128 High Street, Ruislip,
Middlesex, HA4 8LL

rl@coopersresidential.co.uk

CoopersResidential.co.uk



Important Notice: These particulars, whilst believed to be accurate are set out as a general outline only for guidance and do not constitute any part of an offer or contract. Intending purchasers should not rely on them as statements or representation of fact, but must satisfy themselves by inspection or otherwise has the authority to make or give any representation or warranty in respect of the property.