

Berkeley Close

Ruislip • Middlesex • HA4 6LF
PCM: £1,650 PCM



coopers
est 1986

We are DELIGHTED to offer to the market this VERY SPECIAL two DOUBLE bedroom maisonette set in the HEART of Ruislip just a moments walk from both Ruislip Station (Metropolitan/Piccadilly lines) and Ruislip Gardens Station (Central line). With a whole host of shops, bars, restaurants and amenities located nearby, tenants also have the BENEFIT of easy access to A40/M40/M25 links.

This BEAUTIFUL first floor home BOASTS a stunning, contemporary fitted kitchen, MODERN bathroom, two double bedrooms and a FANTASTIC living room area. There is also a very well kept private garden.

Beautiful first floor maisonette

Two double bedrooms

Stunning fitted kitchen

Modern bathroom

Private garden

Unfurnished

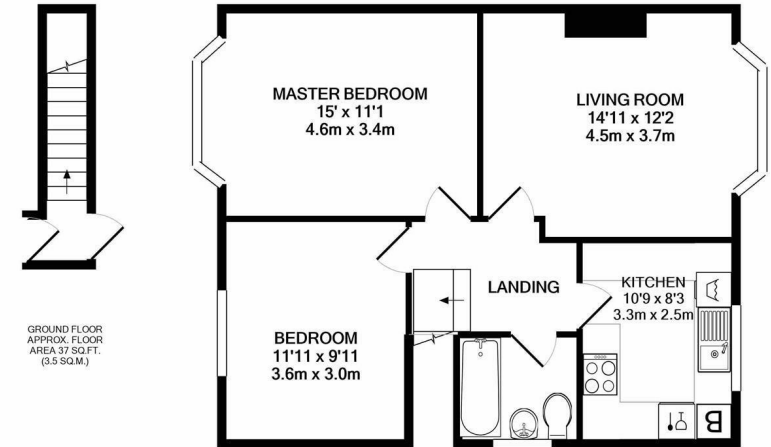
Easy access to A40/M40/M25 links

Spacious throughout

Council Tax Band C

Available Date

7th June 2025



1ST FLOOR
APPROX. FLOOR
AREA 620 SQ.FT.
(57.6 SQ.M.)

TOTAL APPROX. FLOOR AREA 657 SQ.FT. (61.1 SQ.M.)

Whilst every attempt has been made to ensure the accuracy of the floor plan contained here, measurements of doors, windows, rooms and any other items are approximate and no responsibility is taken for any error, omission, or mis-statement. This plan is for illustrative purposes only and should be used as such by any prospective purchaser. The services, systems and appliances shown have not been tested and no guarantee as to their operability or efficiency can be given
Made with Metropix ©2020

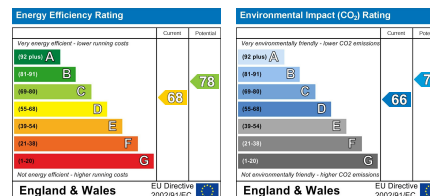


coopers
est 1986

01895 625 625

**126-128 High Street, Ruislip,
Middlesex, HA4 8LL**
rl@coopersresidential.co.uk

CoopersResidential.co.uk



Important Notice: These particulars, whilst believed to be accurate are set out as a general outline only for guidance and do not constitute any part of an offer or contract. Intending purchasers should not rely on them as statements or representation of fact, but must satisfy themselves by inspection or otherwise has the authority to make or give any representation or warranty in respect of the property.