

Jasmin Close

Northwood • Middlesex • HA6 1DH

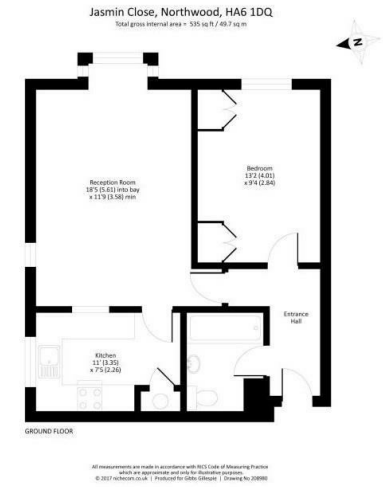
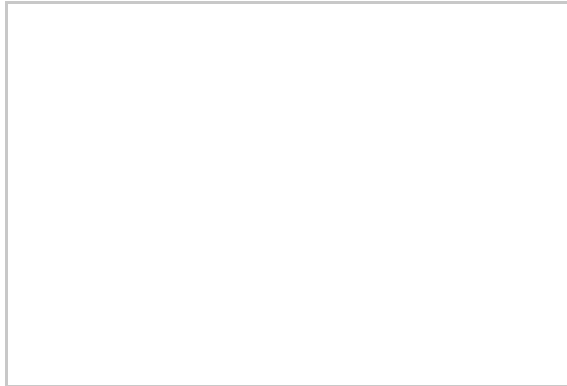
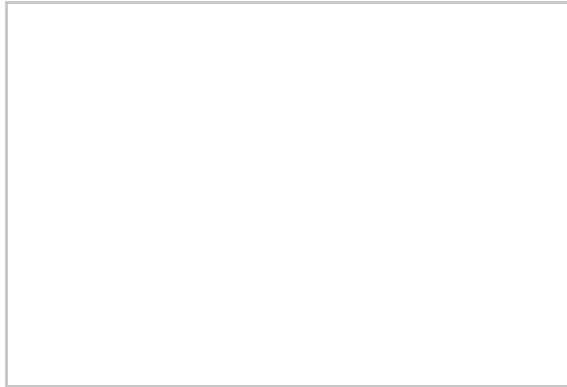
PCM: £1,370 PCM



coopers
est 1986



Immaculate presented, larger than average one bedroom ground floor flat set in the popular Jasmin Close development, just moments from shops, bars, amenities and a Metropolitan tube station. This great property boasts a spacious reception room that leads to a modern fitted kitchen, a double bedroom and a spacious bathroom. Other benefits include gas central heating and allocated parking.



Ground floor

Spacious apartment

Modern bathroom

Walking distance to Northwood Hills Station

Double glazed windows

Popular location

Modern fitted kitchen

Allocated parking

Entryphone system

Unfurnished

Available Date

10th May 2025

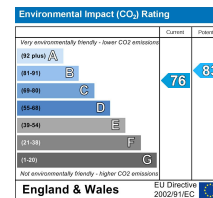
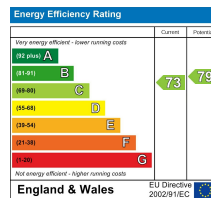
01895 625 625

126-128 High Street, Ruislip,

Middlesex, HA4 8LL

rl@coopersresidential.co.uk

CoopersResidential.co.uk



Important Notice: These particulars, whilst believed to be accurate are set out as a general outline only for guidance and do not constitute any part of an offer or contract. Intending purchasers should not rely on them as statements or representation of fact, but must satisfy themselves by inspection or otherwise has the authority to make or give any representation or warranty in respect of the property.

coopers
est 1986