

# The Drive

Ickenham • Middlesex • UB10 8AF

PCM: £6,000 PCM



coopers  
est 1986







A striking and substantial seven bedroom, double fronted detached residence set on undoubtedly one of Ickenhams most finest and prestigious roads. The impressive property has been designed to a meticulously high standard and boasts over 3800 square ft over three floors. The aspirational property offers exceptional reception/entertaining/family space with pockets of privacy. The home boasts seven bedrooms, 5 bathrooms, kitchen/diner, utility room, guest cloakroom, double garage, off street parking and immaculate front and rear gardens.

7 Bedroom detached

5 Bathrooms

4 En-Suites

Prestigious location

Large living space

Kitchen & dining

Sauna

Off street parking

Double garage

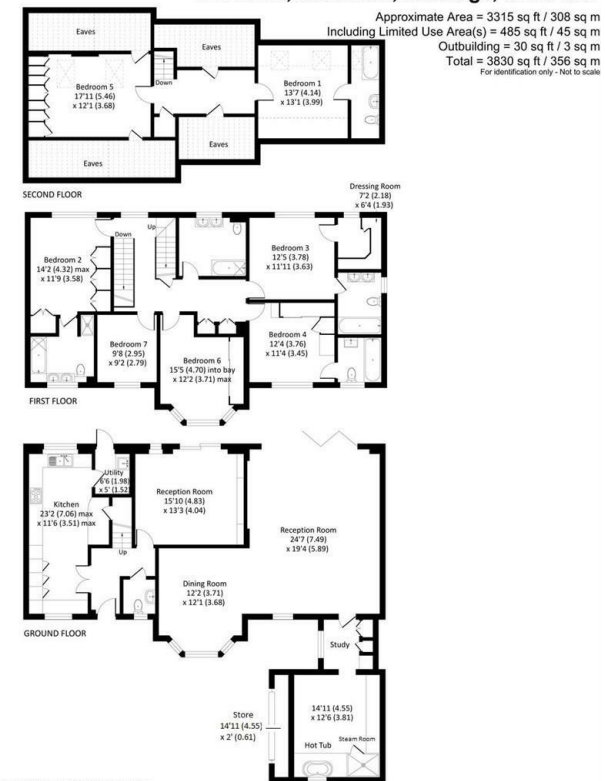
Close to A40 and transport links

**Available Date**

1st March 2025



Denotes restricted head height



Floor plan produced in accordance with RICS Property Measurement Standards incorporating International Property Measurement Standards (IPMS2 Residential). ©nicholson 2022. Produced for Gibbs Gillespie. REF: 808251



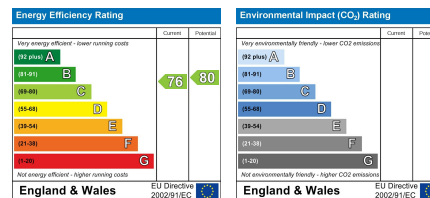
**coopers**  
est 1986

**01895 625 625**

126-128 High Street, Ruislip,  
Middlesex, HA4 8LL

rl@coopersresidential.co.uk

**CoopersResidential.co.uk**



Important Notice: These particulars, whilst believed to be accurate are set out as a general outline only for guidance and do not constitute any part of an offer or contract. Intending purchasers should not rely on them as statements or representation of fact, but must satisfy themselves by inspection or otherwise has the authority to make or give any representation or warranty in respect of the property.