

30 Long Lane

Ickenham • Middlesex • UB10 8TA

PCM: £1,850 PCM



coopers
est 1986

LUXURY FIRST FLOOR DUPLEX APARTMENT WITH PRIVATE GARDEN.

Cherrywood House is perfectly situated in the heart of Ickenham Village and has been completed to the highest specification throughout. It is within walking distance of Ickenham station and local shops/restaurants.

This first floor duplex apartment comprises; two double bedrooms, two bathrooms, open plan kitchen/living room and private garden. This property also boasts gas central heating and allocated parking.

Available beginning of November.

Duplex Apartment

Modern Contemporary finish

Private Garden

Allocated parking

Two bedrooms

Two bathrooms

Walking distance to Ickenham Station

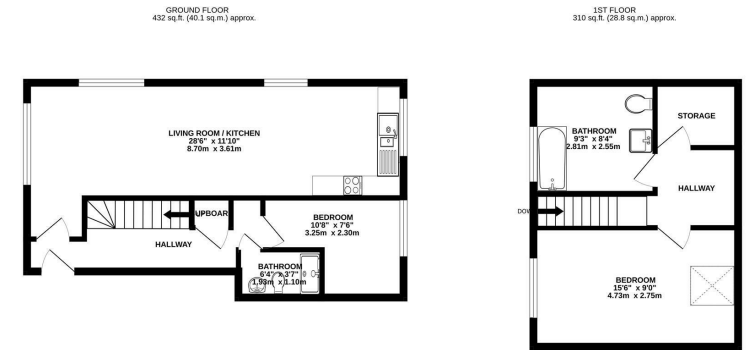
In the heart of Ickenham Village

Gas Central Heating

Available beginning November

Available Date

2nd November 2024



TOTAL FLOOR AREA: 742 sq ft (68.9 sq m) approx.
 Whilst every attempt has been made to ensure the accuracy of the floorplan contained herein, measurements of plans, windows, doors and any other items are approximate and no responsibility is taken for any error, omission or mis-statement. This plan is for illustrative purposes only and should be used as such by any prospective purchaser. The services, systems and appliances shown have not been tested and no guarantee as to their operability or efficiency can be given.
 Made with Metreapp (2023)



01895 625 625

126-128 High Street, Ruislip,
 Middlesex, HA4 8LL
 rl@coopersresidential.co.uk

CoopersResidential.co.uk

Energy Efficiency Rating		Environmental Impact (CO ₂) Rating	
Current	Potential	Current	Potential
A	A	A	A
B	B	B	B
C	C	C	C
D	D	D	D
E	E	E	E
F	F	F	F
G	G	G	G

Not energy efficient - higher running costs
 Not environmentally friendly - higher CO₂ emissions
 England & Wales EU Directive 2002/91/EC

Important Notice: These particulars, whilst believed to be accurate are set out as a general outline only for guidance and do not constitute any part of an offer or contract. Intending purchasers should not rely on them as statements or representation of fact, but must satisfy themselves by inspection or otherwise has the authority to make or give any representation or warranty in respect of the property.

