

# Stowe Crescent

Ruislip • Middlesex • HA4 7SS

PCM: £2,600 PCM



coopers  
est 1986







We are delighted to offer to the market this BEAUTIFUL, 4 bedroom EXTENDED semi-detached family home set in the leafy, sought after area of North Ruislip within the catchment of Whiteheath school. This MODERN home briefly comprises to ground floor; entrance hallway, through lounge, contemporary kitchen dining area and downstairs bedroom with en-suite shower room. To the first floor is a modern family bathroom and three bedrooms. Other benefits include spacious back garden, off street parking, double glazed windows and gas central heating.

Offered unfurnished and available beginning of August.

Excellent condition

Extended semi detached house

In one of Ruislip's finest locations

Spacious throughout

Two bathrooms

Off street parking

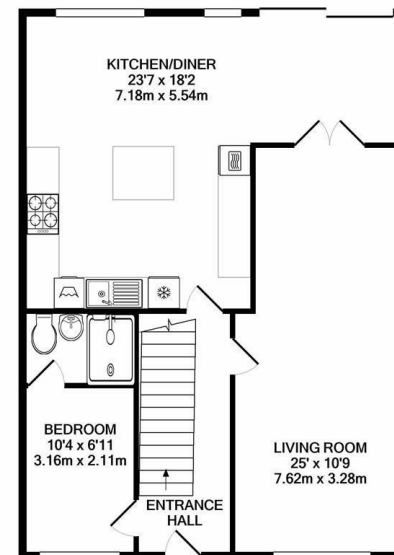
Private garden

In catchment of very popular schools

Unfurnished

**Available Date**

16th August 2024



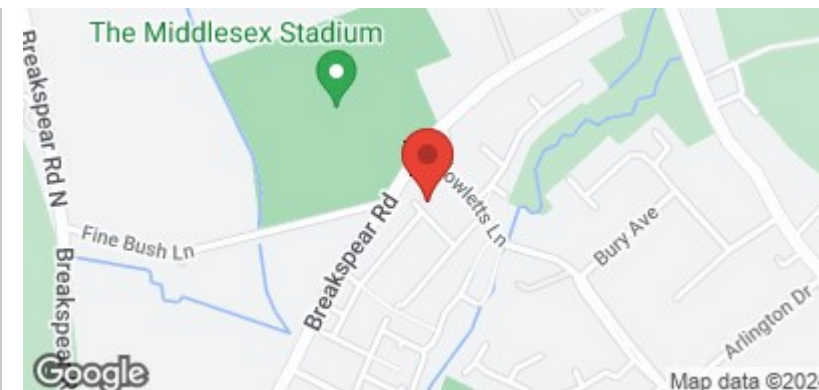
GROUND FLOOR  
APPROX. FLOOR  
AREA 779 SQ.FT.  
(72.4 SQ.M.)



1ST FLOOR  
APPROX. FLOOR  
AREA 412 SQ.FT.  
(38.3 SQ.M.)

TOTAL APPROX. FLOOR AREA 1191 SQ.FT. (110.7 SQ.M.)

Whilst every attempt has been made to ensure the accuracy of the floor plan contained here, measurements of doors, windows, rooms and any other items are approximate and no responsibility is taken for any error, omission, or mis-statement. This plan is for illustrative purposes only and should be used as such by any prospective purchaser. The services, systems and appliances shown have not been tested and no guarantee as to their operability or efficiency can be given  
Made with Metropix ©2022



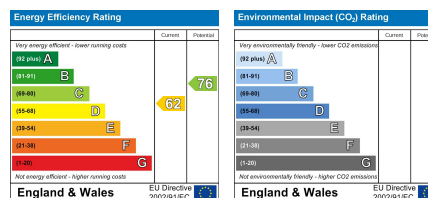
**coopers**  
est 1986

**01895 625 625**

**126-128 High Street, Ruislip,  
Middlesex, HA4 8LL**

**rl@coopersresidential.co.uk**

**CoopersResidential.co.uk**



Important Notice: These particulars, whilst believed to be accurate are set out as a general outline only for guidance and do not constitute any part of an offer or contract. Intending purchasers should not rely on them as statements or representation of fact, but must satisfy themselves by inspection or otherwise has the authority to make or give any representation or warranty in respect of the property.