

Cromwell House

Ruislip • Middlesex • HA4 7BD

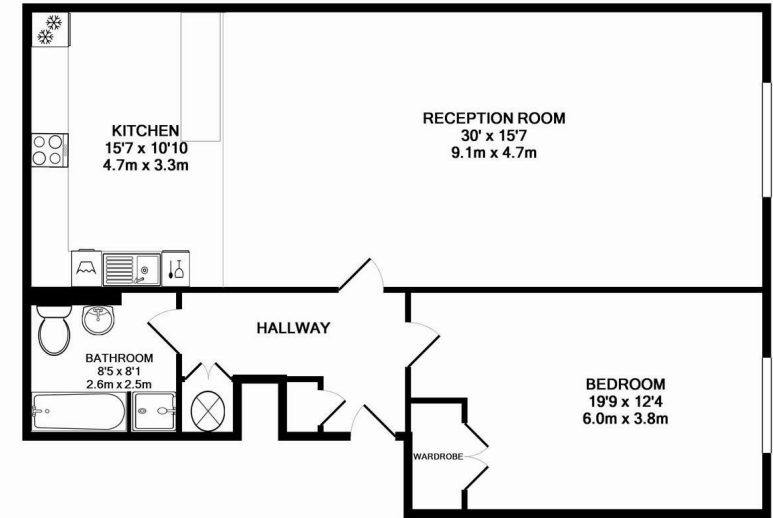
PCM: £1,450 PCM



coopers
est 1986

Coopers are delighted to offer to the market a larger than average one bedroom apartment spanning over 1000 sq feet situated on Ruislip High Street, ideally situated for Ruislip train station and High Street with its wealth of shops, restaurants and amenities. This amazing, one off property has been finished to a very high standard and boasts; entrance hallway with storage, a very good size double bedroom with built in wardrobe, an enormous lounge with modern open plan fully fitted kitchen. The property has also a contemporary bathroom with shower cubicle and bath. Other benefits of this property include 2 parking spaces and double glazed windows.

Offered unfurnished and available from the middle of August.



CROMWELL HOUSE, HIGH STREET, RUISLIP, HA4
 TOTAL APPROX. FLOOR AREA 1036 SQ.FT. (96.2 SQ.M.)
 Whilst every attempt has been made to ensure the accuracy of the floor plan contained here, measurements of doors, windows, rooms and any other items are approximate and no responsibility is taken for any error, omission, or mis-statement. This plan is for illustrative purposes only and should be used as such by any prospective purchaser. The services, systems and appliances shown have not been tested and no guarantee as to their operability or efficiency can be given.
 Made with Metropix ©2016



Over 1000 sq ft

Enormous executive apartment

Modern features

Off street parking

Excellent location

Walking distance to Ruislip Station

Shops, restaurants, amenities and bars on your door step

Contemporary bathroom

Unfurnished

Stylish fitted kitchen

Available Date

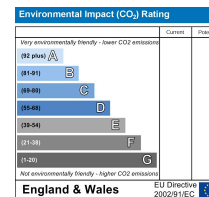
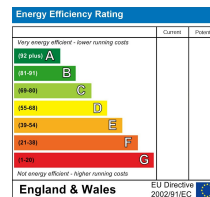
17th August 2024

01895 625 625

**126-128 High Street, Ruislip,
 Middlesex, HA4 8LL**

rl@coopersresidential.co.uk

CoopersResidential.co.uk



Important Notice: These particulars, whilst believed to be accurate are set out as a general outline only for guidance and do not constitute any part of an offer or contract. Intending purchasers should not rely on them as statements or representation of fact, but must satisfy themselves by inspection or otherwise has the authority to make or give any representation or warranty in respect of the property.

coopers
 est 1986