

The Avenue

Ickenham • Middlesex • UB10 8NP

PCM: £3,000 PCM



coopers
est 1986



The Avenue is an exclusive private residential road that is regarded as one of Ickenham's most prestigious and sought after locations. Designed for a busy lifestyle and growing family, this fabulous home offers expansive living and entertainment space and versatile living. Nestled in a quiet, family-friendly street this residence boasts wonderful neighbours and a convenient location.

One of Ickenham's finest roads

Detached

Ample parking

Moments from Ickenham High Street

Walking distance to stations

Modern kitchen

Garage

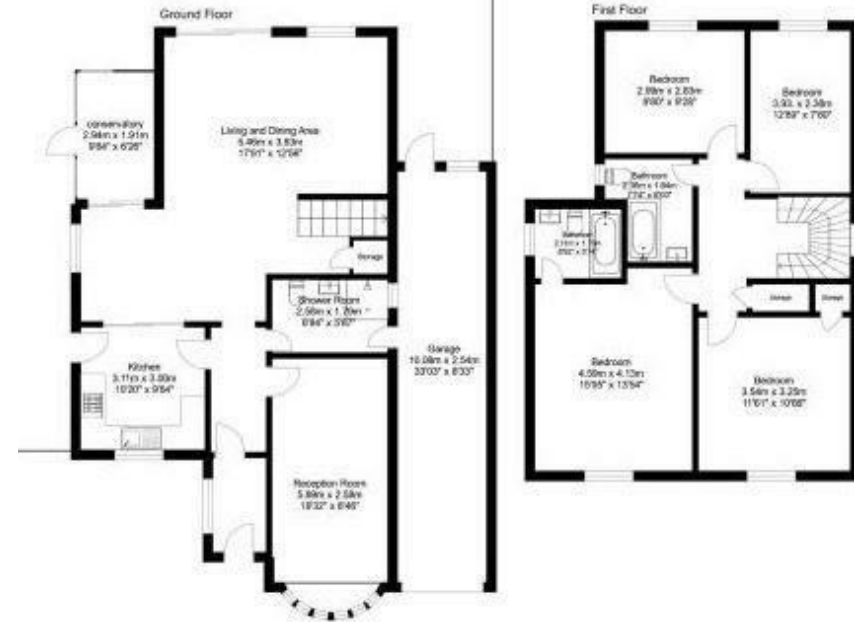
Secluded garden

Unfurnished

Available now

Available Date

6th August 2024



Total floor area 176.23 sq. meters (1898.82 sq. feet)
This floor plan is for illustrative purposes only. It's not draw to scale any measurements.



01895 625 625
126-128 High Street, Ruislip,
Middlesex, HA4 8LL
rl@coopersresidential.co.uk

CoopersResidential.co.uk

Energy Efficiency Rating	
Current	Potential
A	
B	
C	
D	
E	
F	
G	

Very energy efficient - lower running costs
Not energy efficient - higher running costs

England & Wales EU Directive 2002/91/EC

Environmental Impact (CO ₂) Rating	
Current	Potential
A	
B	
C	
D	
E	
F	
G	

Very environmentally friendly - lower CO₂ emissions
Not environmentally friendly - higher CO₂ emissions

England & Wales EU Directive 2002/91/EC

Important Notice: These particulars, whilst believed to be accurate are set out as a general outline only for guidance and do not constitute any part of an offer or contract. Intending purchasers should not rely on them as statements or representation of fact, but must satisfy themselves by inspection or otherwise has the authority to make or give any representation or warranty in respect of the property.

coopers
est 1986